

Bloomfield's Blueprint

*Returning to teaching &
learning for the 2020-2021
school year*




January 7, 2021





Part One
COVID Update





Hopeful News




OCHD has opened
COVID-19 vaccine
registration for
educators in the
county.



Instructions were
shared with staff
on the evening
of 1/6/21.



First dose
appointments
are available in
the coming
weeks.



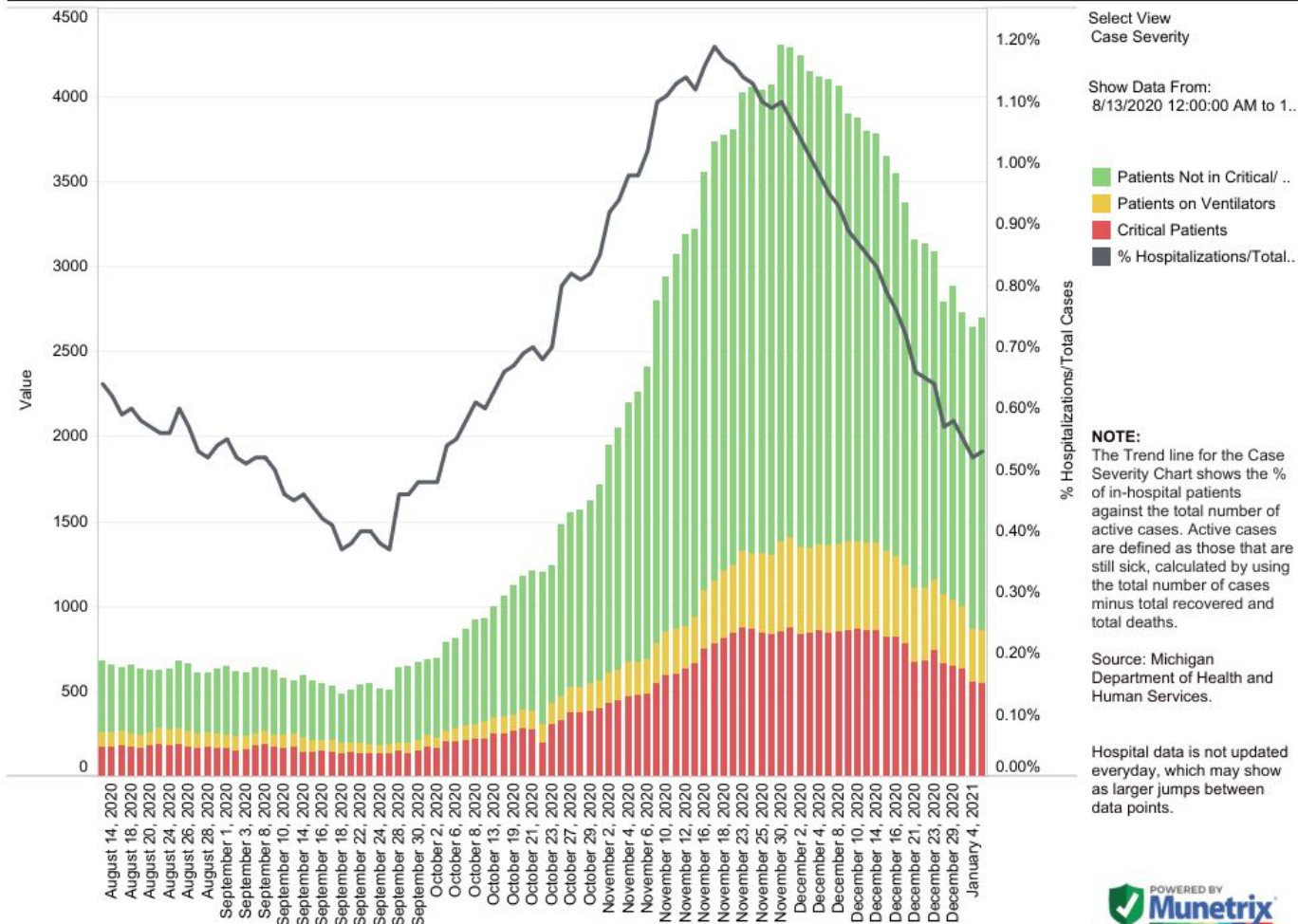
Reporting Period: December 23 - January 5

Reporting period: December 23 – January 5			
METRIC	RESULT	Trend	DEFINITION
Total “Confirmed and Probable” COVID-19 Cases Reported in Oakland County	3627	→	“Confirmed”: laboratory-confirmed positive molecular viral test “Probable”: rapid-antigen positive viral test
Cases/Day per Million Population 7-Day Average 14-Day Average	207 215	↑	Average number of cases per day per million population over the given timeframe
14-Day Average Daily Case Counts	259	→	The average number of cases per day reported over the last 14 days of the reporting period
14-Day Average Daily Death Counts	0.36	↓	The average number of deaths per day reported over the last 14 days of the reporting period
14-Day Average Tests Per Day	3882	↓	The average number of diagnostic tests administered to Oakland residents over the last 14 days of the reporting period
Percentage of Cases Hospitalized in the Last 14 Days	2.1%	→	The percentage of cases (confirmed and probable) that reported being hospitalized over the last 14 days of the reporting period
Percent Positivity (7 days)	9.02%	↑	Percentage of reported positive tests over the last 7 days (December 29 – January 4)
Percent Positivity (28 days)	9.12%	↓	Percentage of reported positive tests over the last 28 days (December 8 – January 4)
Healthcare Capacity Strength	STABLE	→	Assessment of bed availability and hospital capacity
Testing, Tracing, Containment Infrastructure	STRONG	→	Assessment of testing availability and OCHD contact tracing capability
County Level Risk Determination	E	→	County level risk determination based on state guidance. Local epidemiology is also a factor in school and district-specific decision making

Total Oakland County Cases Reported by Age Group					
Age Group	Total Cases	Trend	Age Group	Total Cases	Trend
0-4	58	↑	50-59	578	↑
5-9	51	↓	60-69	403	→
10-13	78	→	70-79	232	→
14-18	196	↑	80-89	154	→
19-29	718	↑	90+	64	→
30-39	600	↑	Unknown	15	
40-49	479	→			

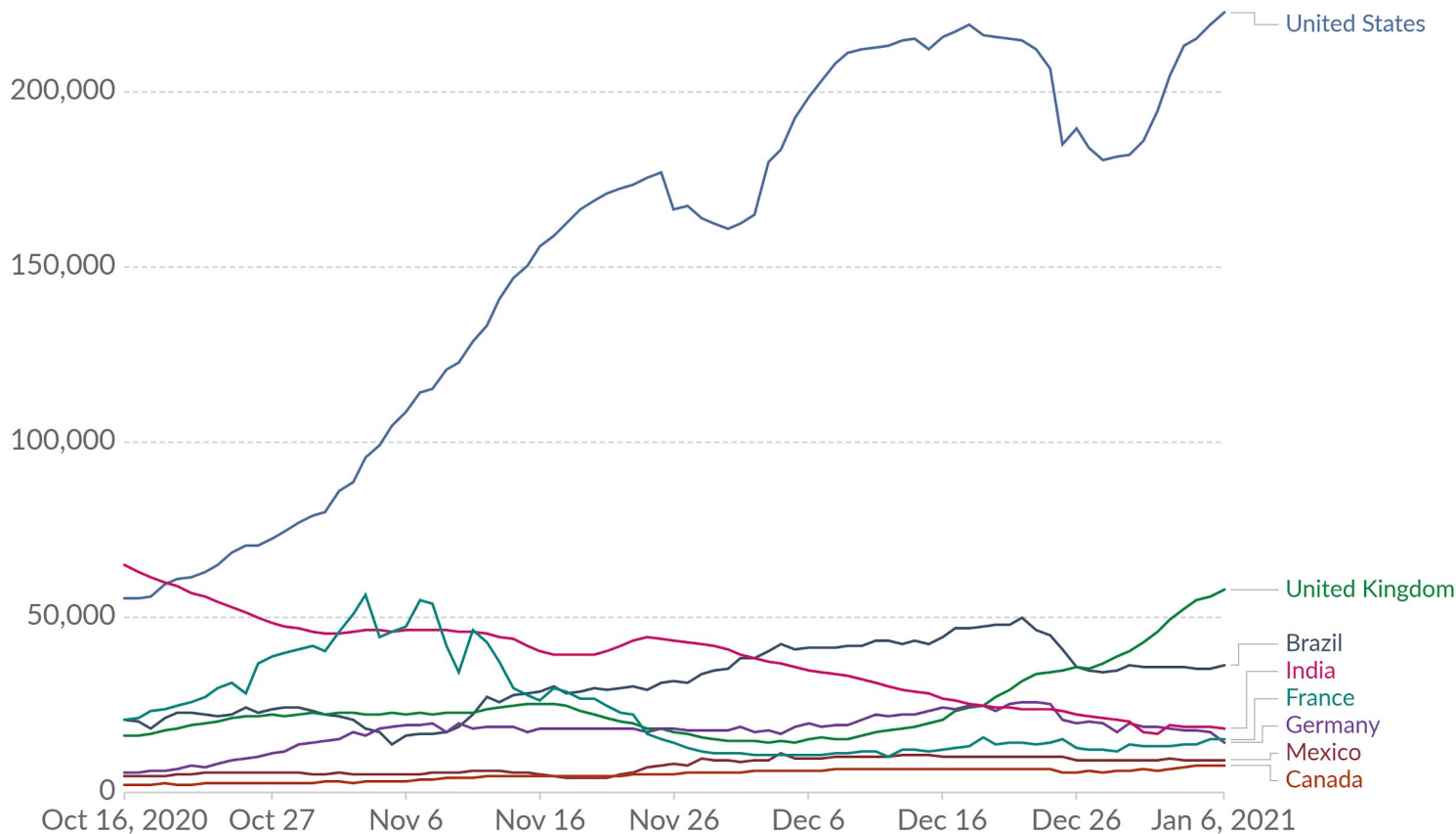
The number of reported cases remained stable, with a slight increase of 220 cases. Percent positivity over the last 7 days increased just over 1%. The percentage of cases hospitalized remained stable at 2.1%. The number of tests per day decreased by 546 tests. Healthcare capacity remained stable.

State Hospitalization Trends - Case Severity



Daily new confirmed COVID-19 cases

Shown is the rolling 7-day average. The number of confirmed cases is lower than the number of actual cases; the main reason for that is limited testing.



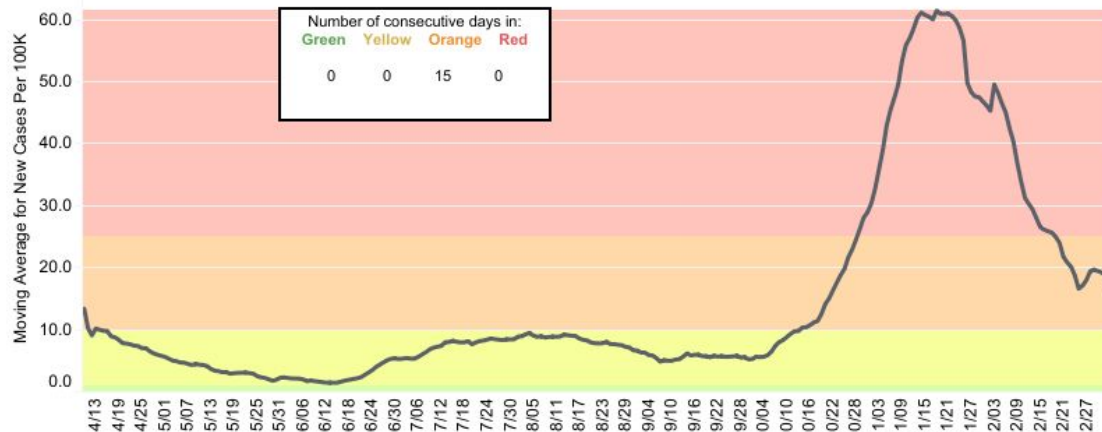
Source: Johns Hopkins University CSSE COVID-19 Data – Last updated 7 January, 06:07 (London time)

CC BY

County Dashboard: Oakland County

Notes

New Cases per 100K Data



Data for 1/2/2021:

New Cases per 100K: 3.74

Percent Positive: 12.29%

County
Oakland County

Show Data From:
4/10/2020 to 1/2/2021
and Null values

■ New Cases Moving Avera..

■ Percent Positive Moving A..

Data Source: <https://www.michigan.gov/coronavirus>

Moving average is based on previous 7 days, with a lag time of 3-days for data accuracy.

Reference lines are shown for risk of outbreak levels:

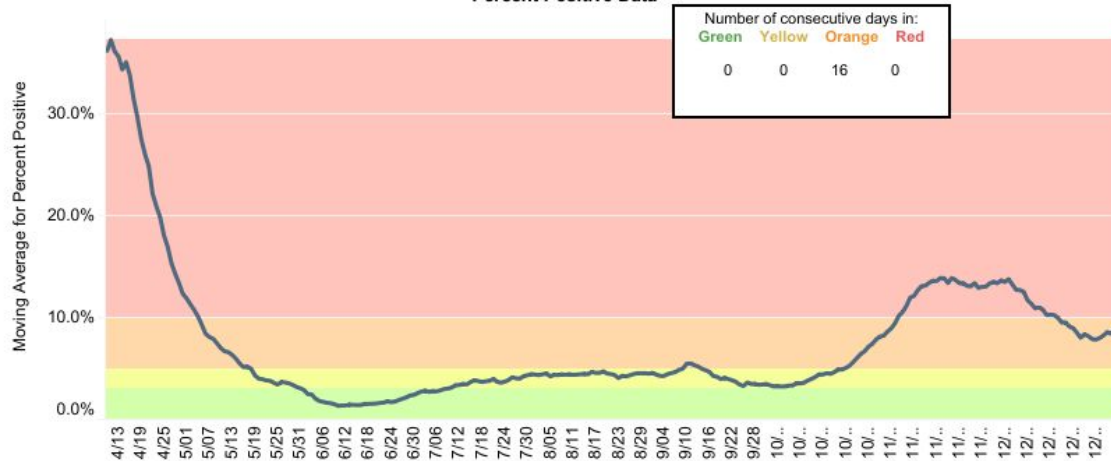
Red: >25 cases/100K
>10% positivity

Orange: 10-25 cases/100K
5-10% positivity

Yellow: 1-10 cases/100K
3-5% positivity

Green: <1 cases/100K
<3% positivity

Percent Positive Data



Developed in collaboration with Bloomfield Hills School District and Munetrix





COVID-19 Summary for Oakland County



54,894

Total Cases¹

1,474

Total Deaths

45,637

Total Recovered²

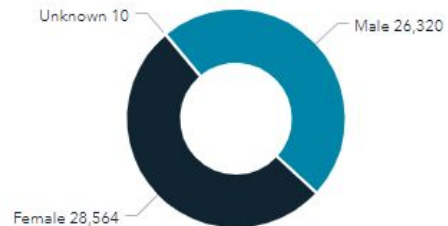
[Counts](#)

[About](#)

Deaths by Gender



Cases by Gender



Counts by Day*

Date	Cases	Deaths
06-Jan	196	
05-Jan	303	
04-Jan	185	
03-Jan	137	
02-Jan	122	
01-Jan	111	

7 Day Average of Daily Cases



[7 Day Case Average](#)

[7 Day Death Average](#)

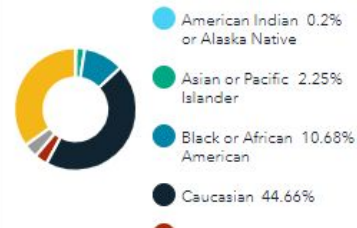
[Total Confirmed Cases](#)

Cases by Age Group



Cases by Age Group

Percentage of Cases by Race



[Cases by Race](#)

[Deaths by Race](#)



Dashboard: Brown University and School Superintendents and Principal Associations

Entire Data Period: August 31 to December 11th

(Observations: Student or Staff Biweekly Wave)

[Details on Data Collection Efforts Here](#)

Total Student-Waves: Enrollment

▼ 2

36,498,751

Student-Wave: In Person Students

▼ 1

13,165,092

Staff-Waves: Staff in Building

▼ 1

5,292,805

Student Case Rate (Daily Per 100,000)

▼ 1

18

Staff Case Rate (Daily Per 100,000)

▼ 1

37

Community Case Rate (Matched Areas) ⓘ

▼ 2

26

Student Infection Rate (Avg. for 2 Week Period)

▼ 1

0.25%

Staff Infection Rate (Avg for 2 Week Periods)

▼ 1

0.52%

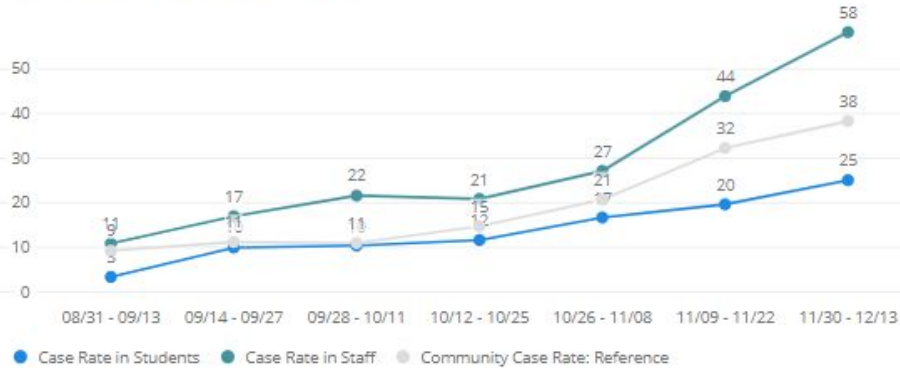
Community Test Positivity Rate (Avg by Period)

▼ 1

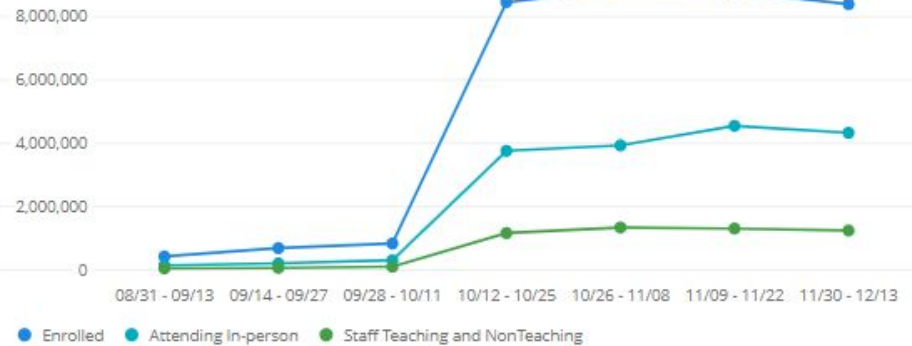
7.20%

Dashboard: Brown University and School Superintendents and Principal Associations

Case Rates in Students and Staff ⓘ



Students and Staff Represented in Dataset





END OF SECTION

DISCUSSION

Part Two
Staffing Update

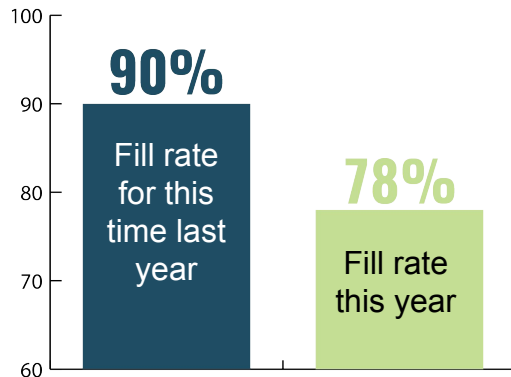


Staffing Update



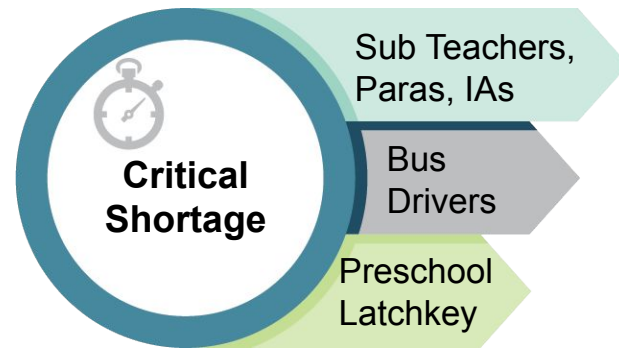
Leave of Absence Provisions:

- 176 recovered / returned
- 9 staff active on EPSLA
- 2 currently quarantined
- 18 active FMLA
- Plus the unknown of those who have not told us since we are in remote status



Substitute Pool

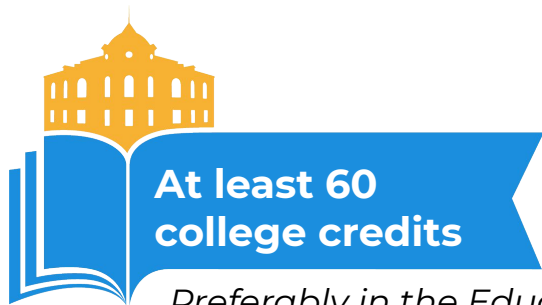
Support Staff	Paras	Preschool/ Latch Key	Drivers
2019 Resignations	-12	-10	-13
2019 New Hires	+9	+9	+13
2020 Resignations	-14	-26	-11
2020 New Hires	+8	+4	+3
Cumulative Difference	-9	-23	-8



Recruitment Efforts:

- *Operational/support positions:* Oakland County Consortium, Linked In, signs, flyers, social media, PTO sites, FB/Instagram, etc..
- *Instructional/Admin:* Oakland County Consortium, Handshake (all participating universities), MASA, MAISA, MASB, Michigan ASCD, MASSP, MEMSPA, MSPRA

Substitute *Teachers*



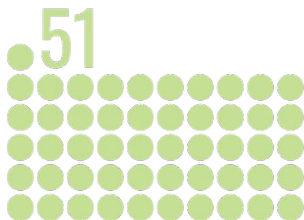
At least 60
college credits

Preferably in the Education field



June 2019 - Jan 2020

Number of new substitute
teachers, paras, and instructional
assistants



June 2020 - Jan 2021



BHS has
increased the
daily rate
from \$105 to
\$130

Applicants can apply by
visiting www.edustaff.org





END OF SECTION

DISCUSSION

Part Three

Return to Hybrid
In Person Learning



Overview: Implement Plan from Fall 2020 Hybrid In Person Learning

Special
Education
schedules vary
by program

Grades
Kindergarten
through 8 will
divide the day
between AM
and PM
cohorts

Grades 9 through
12 will have full
day, Group A
(Monday &
Tuesday) and
Group B
(Thursday &
Friday) in person
schedules

Bloomin'
Preschool will
resume

A horizontal line with two open circles at the ends. From each open circle, a vertical line extends downwards to a solid dark grey circle.

Proposed Return to In Person Hybrid

January 19, 2021

- Early On
- SEED***
- Bloomin' Preschool
- All students in K-8 (including ARP*/FRP** K-8)
- Wing Lake
- Grades PreK-8 Deaf & Hard of Hearing
- Bowers Academy
- PREP****
- Black Hawk Extended Care

January 25, 2021

- International Academy

February 1, 2021

- All Bloomfield Hills High School students (including ARP*/FRP** 9-12)
- Grades 9-12 Deaf & Hard of Hearing

*ARP = Academic
Resource Program


**FRP = Functional
Resource Program

***SEED = Special
Education Early
Development

****PREP = Prepared,
Responsible,
Employable and
Productive

LEADING INDICATORS

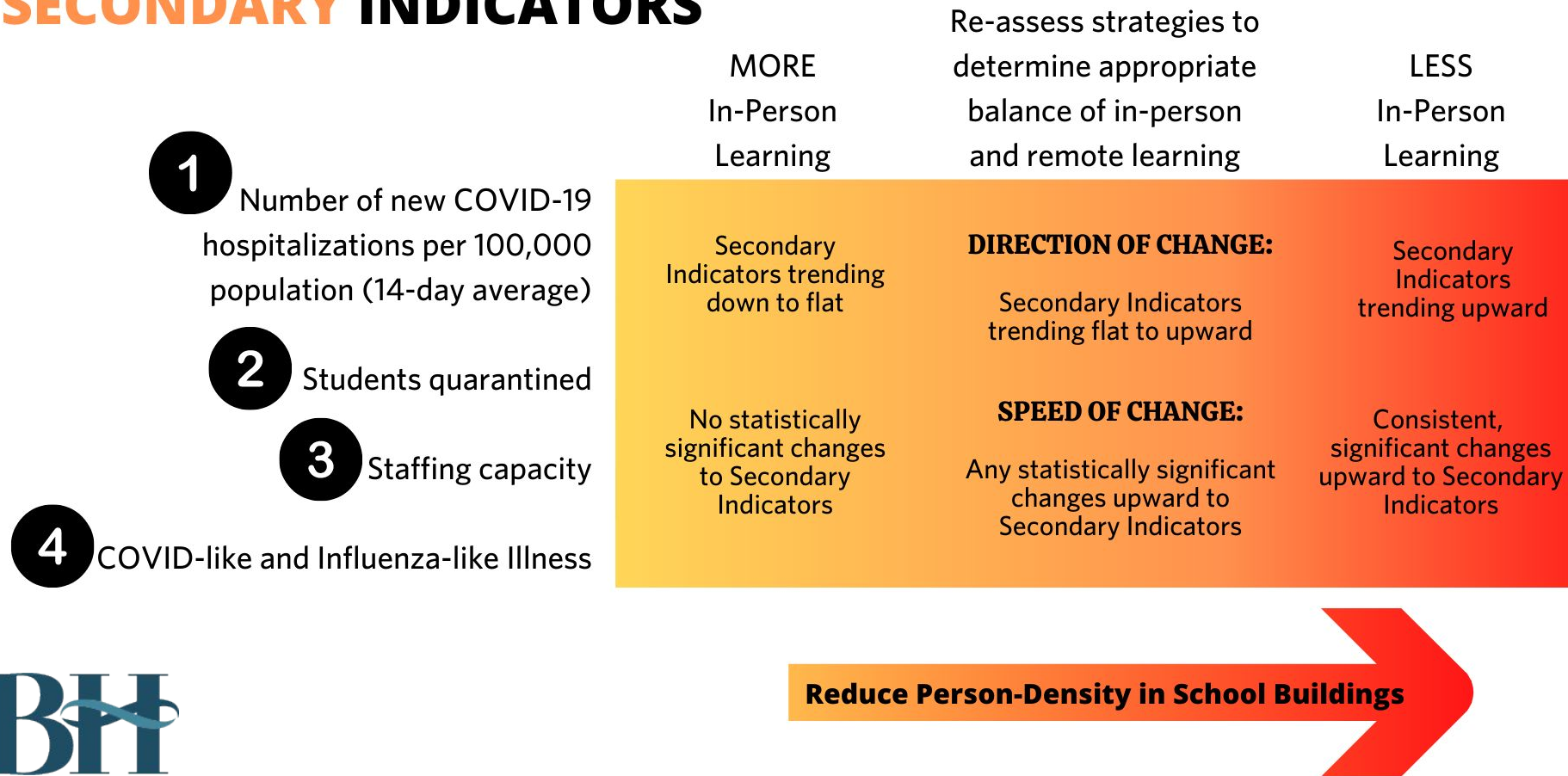
	MORE In-Person Learning	Re-assess strategies to determine appropriate balance of in-person and remote learning	LESS In-Person Learning
1 Number of new cases of COVID-19 (7-day moving average of new cases per 100,000 population per day)	< 10 new cases per 100,000 based on 7 day moving average	10 to < 25 cases per 100,000 based on 7 day moving average	25+ cases per 100,000 based on 7 day moving average
2 Percent positivity rate (7 day moving average)	< 3% based on 7 day moving average	3-<10% based on 7 day moving average	>10% based on 7 day moving average

**Reduce Person-Density in School Buildings**



* Originally adapted from: the Harvard Global Health Institute's publication The Path to Zero and Schools: Achieving Pandemic Resilient Teaching and Learning Spaces, July 2020 and revised in consideration of the Centers for Disease Control and Prevention (CDC) guidance document Indicators for Dynamic School Decision-Making.

SECONDARY INDICATORS



* Originally adapted from: the Harvard Global Health Institute's publication The Path to Zero and Schools: Achieving Pandemic Resilient Teaching and Learning Spaces, July 2020 and revised in consideration of the Centers for Disease Control and Prevention (CDC) guidance document Indicators for Dynamic School Decision-Making.

High School *Athletics & Activities*

Waiting on guidance from
MHSA.



BH

MHSA[®]



END OF SECTION

DISCUSSION