

Bloomfield's Blueprint

*Returning to teaching &
learning for the 2020-2021
school year*



January 7, 2021



Part Three

Return to Hybrid
In Person Learning



Overview: Implement Plan from Fall 2020 Hybrid In Person Learning

Special
Education
schedules vary
by program

Grades
Kindergarten
through 8 will
divide the day
between AM
and PM
cohorts

Grades 9 through
12 will have full
day, Group A
(Monday &
Tuesday) and
Group B
(Thursday &
Friday) in person
schedules

Bloomin'
Preschool will
resume

A horizontal line with two open circles at the ends. From each open circle, a vertical line extends downwards to a solid dark grey circle.

Proposed Return to In Person Hybrid

January 19, 2021

- Early On
- SEED***
- Bloomin' Preschool
- All students in K-8 (including ARP*/FRP** K-8)
- Wing Lake
- Grades PreK-8 Deaf & Hard of Hearing
- Bowers Academy
- PREP****
- Black Hawk Extended Care

January 25, 2021

- International Academy

February 1, 2021

- All Bloomfield Hills High School students (including ARP*/FRP** 9-12)
- Grades 9-12 Deaf & Hard of Hearing

*ARP = Academic
Resource Program

**FRP = Functional
Resource Program

***SEED = Special
Education Early
Development

****PREP = Prepared,
Responsible,
Employable and
Productive

LEADING INDICATORS

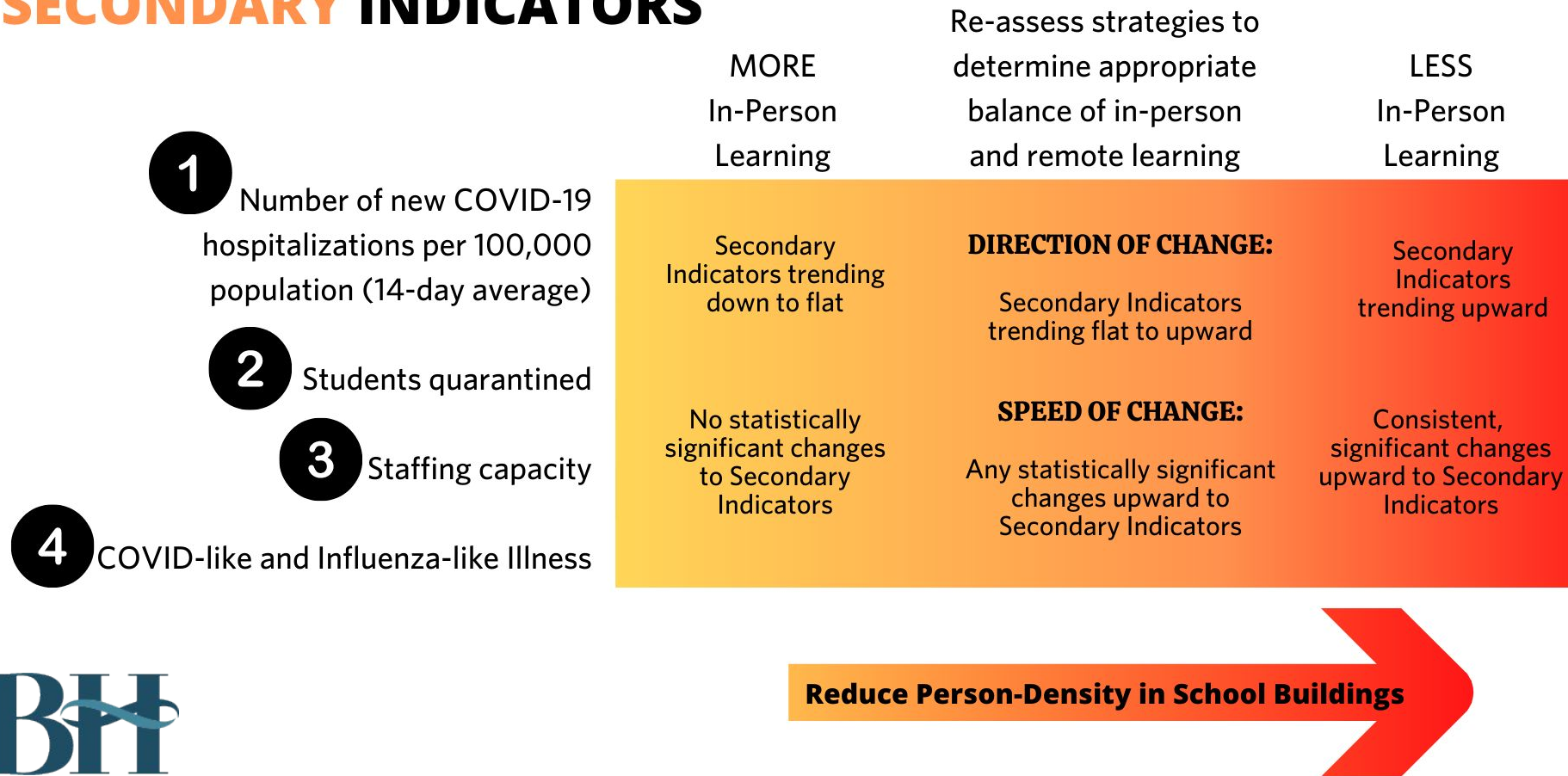
	MORE In-Person Learning	Re-assess strategies to determine appropriate balance of in-person and remote learning	LESS In-Person Learning
1 Number of new cases of COVID-19 (7-day moving average of new cases per 100,000 population per day)	< 10 new cases per 100,000 based on 7 day moving average	10 to < 25 cases per 100,000 based on 7 day moving average	25+ cases per 100,000 based on 7 day moving average
2 Percent positivity rate (7 day moving average)	< 3% based on 7 day moving average	3-<10% based on 7 day moving average	>10% based on 7 day moving average



Reduce Person-Density in School Buildings

* Originally adapted from: the Harvard Global Health Institute's publication The Path to Zero and Schools: Achieving Pandemic Resilient Teaching and Learning Spaces, July 2020 and revised in consideration of the Centers for Disease Control and Prevention (CDC) guidance document Indicators for Dynamic School Decision-Making.

SECONDARY INDICATORS



* Originally adapted from: the Harvard Global Health Institute's publication The Path to Zero and Schools: Achieving Pandemic Resilient Teaching and Learning Spaces, July 2020 and revised in consideration of the Centers for Disease Control and Prevention (CDC) guidance document Indicators for Dynamic School Decision-Making.

High School *Athletics & Activities*

Waiting on guidance from
MHSA.



BH

MHSA[®]



END OF SECTION

DISCUSSION