

Bloomfield's Blueprint

*Returning to teaching &
learning for the 2020-2021
school year*



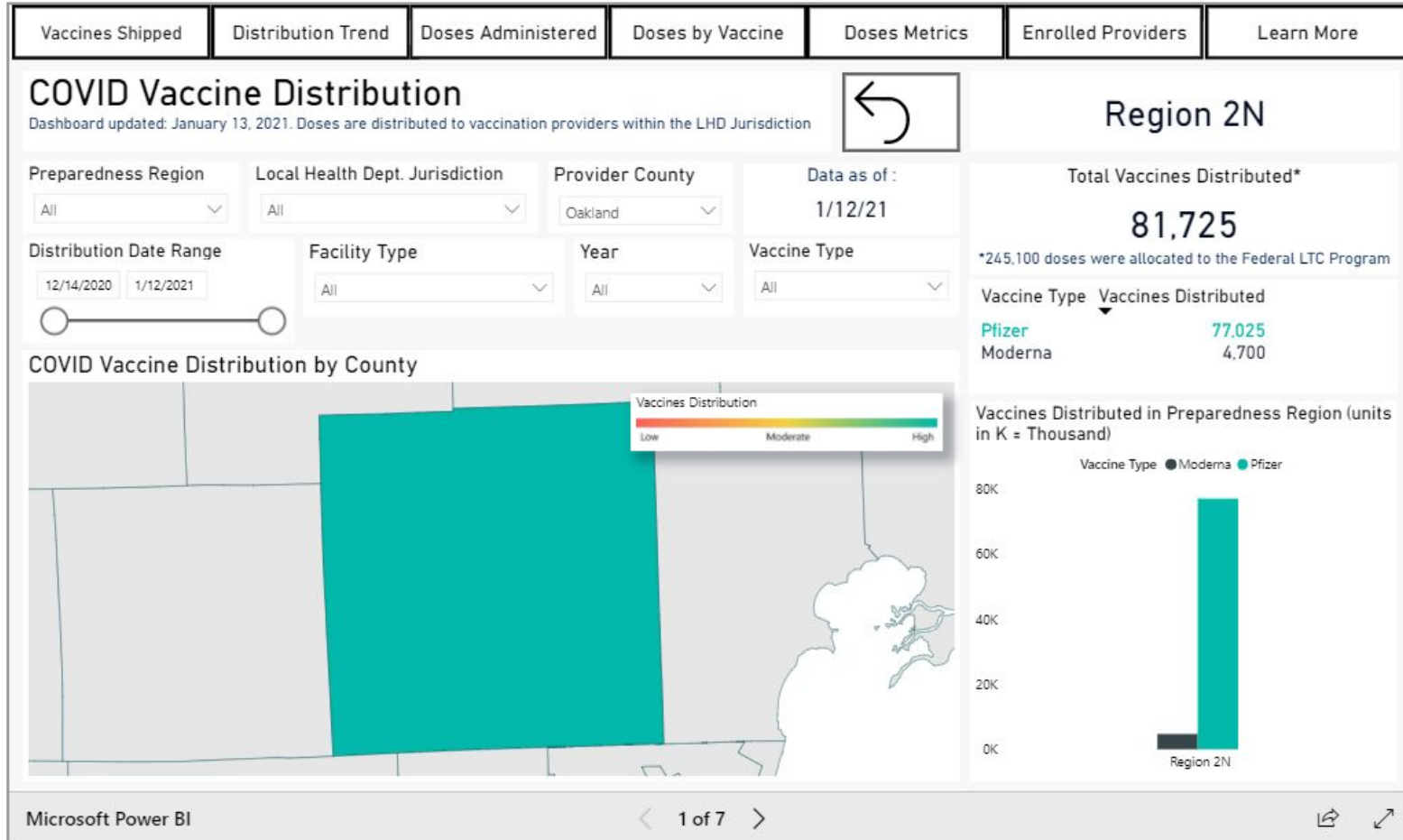
January 14, 2021



Part One
COVID Update



COVID-19 Vaccine Dashboard



Oakland County Schools

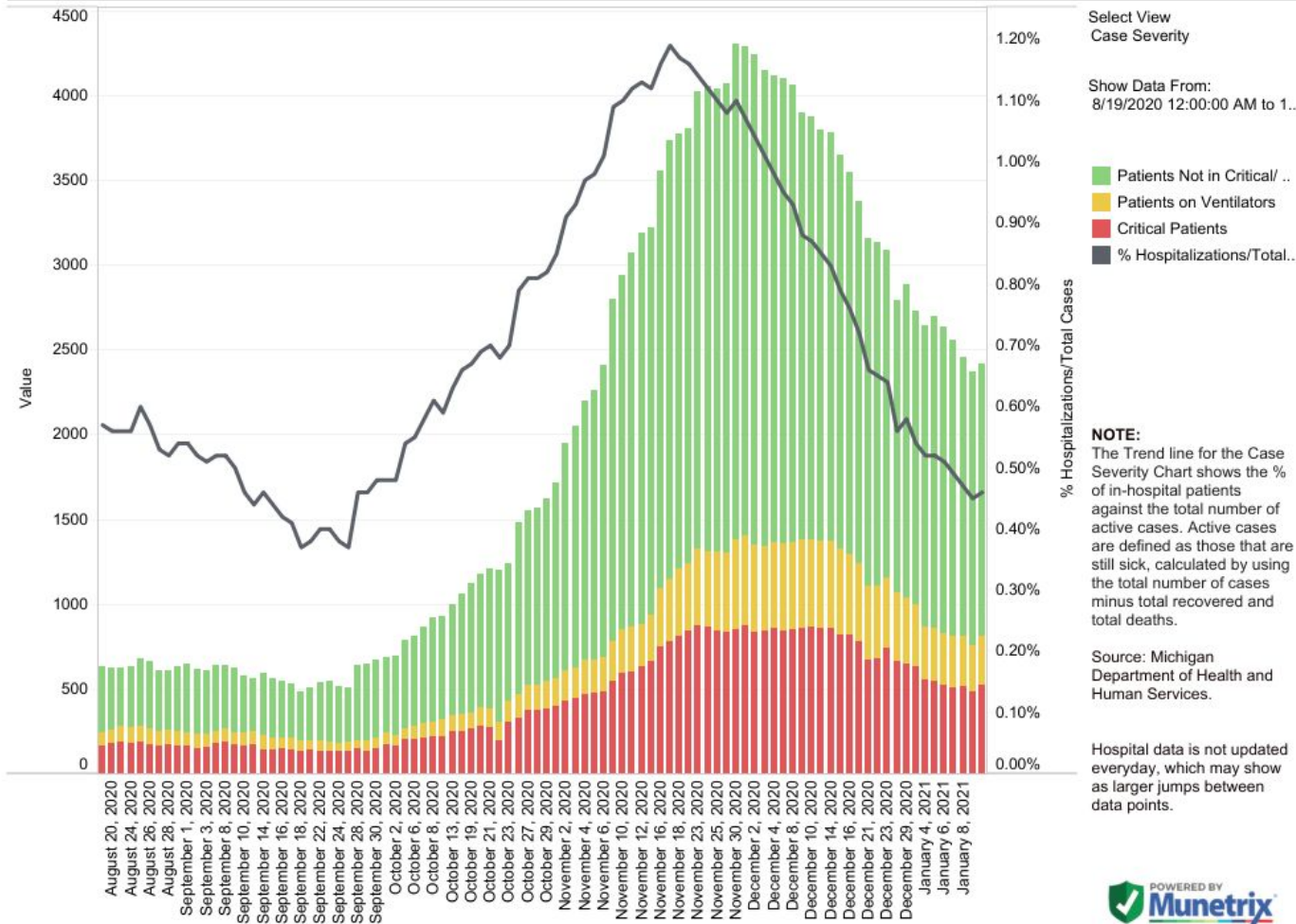
Reporting period: December 30 – January 12			
METRIC	RESULT	Trend	DEFINITION
Total “Confirmed and Probable” COVID-19 Cases Reported in Oakland County	4017	↑	“Confirmed”: laboratory-confirmed positive molecular viral test “Probable”: rapid-antigen positive viral test
Cases/Day per Million Population 7-Day Average 14-Day Average	218 238	↑	Average number of cases per day per million population over the given timeframe
14-Day Average Daily Case Counts	287	↑	The average number of cases per day reported over the last 14 days of the reporting period
14-Day Average Daily Death Counts	1.5	↑	The average number of deaths per day reported over the last 14 days of the reporting period
14-Day Average Tests Per Day	4490	↑	The average number of diagnostic tests administered to Oakland residents over the last 14 days of the reporting period
Percentage of Cases Hospitalized in the Last 14 Days	1.9%	→	The percentage of cases (confirmed and probable) that reported being hospitalized over the last 14 days of the reporting period
Percent Positivity (7 days)	8.11%	↓	Percentage of reported positive tests over the last 7 days (January 5 – January 11)
Percent Positivity (28 days)	8.51%	↓	Percentage of reported positive tests over the last 28 days (December 15 – January 11)
Healthcare Capacity Strength	STABLE	→	Assessment of bed availability and hospital capacity
Testing, Tracing, Containment Infrastructure	STRONG	→	Assessment of testing availability and OCHD contact tracing capability
County Level Risk Determination			Per MDHHS, this metric will no longer be used to make decisions about opening/closing schools.

Reporting Period: December 30 - January 12

Total Oakland County Cases Reported by Age Group					
Age Group	Total Cases	Trend	Age Group	Total Cases	Trend
0-4	63	→	50-59	580	→
5-9	82	↑	60-69	390	→
10-13	114	↑	70-79	236	→
14-18	281	↑	80-89	132	↓
19-29	877	↑	90+	58	→
30-39	618	→	Unknown	22	
40-49	564	↑			

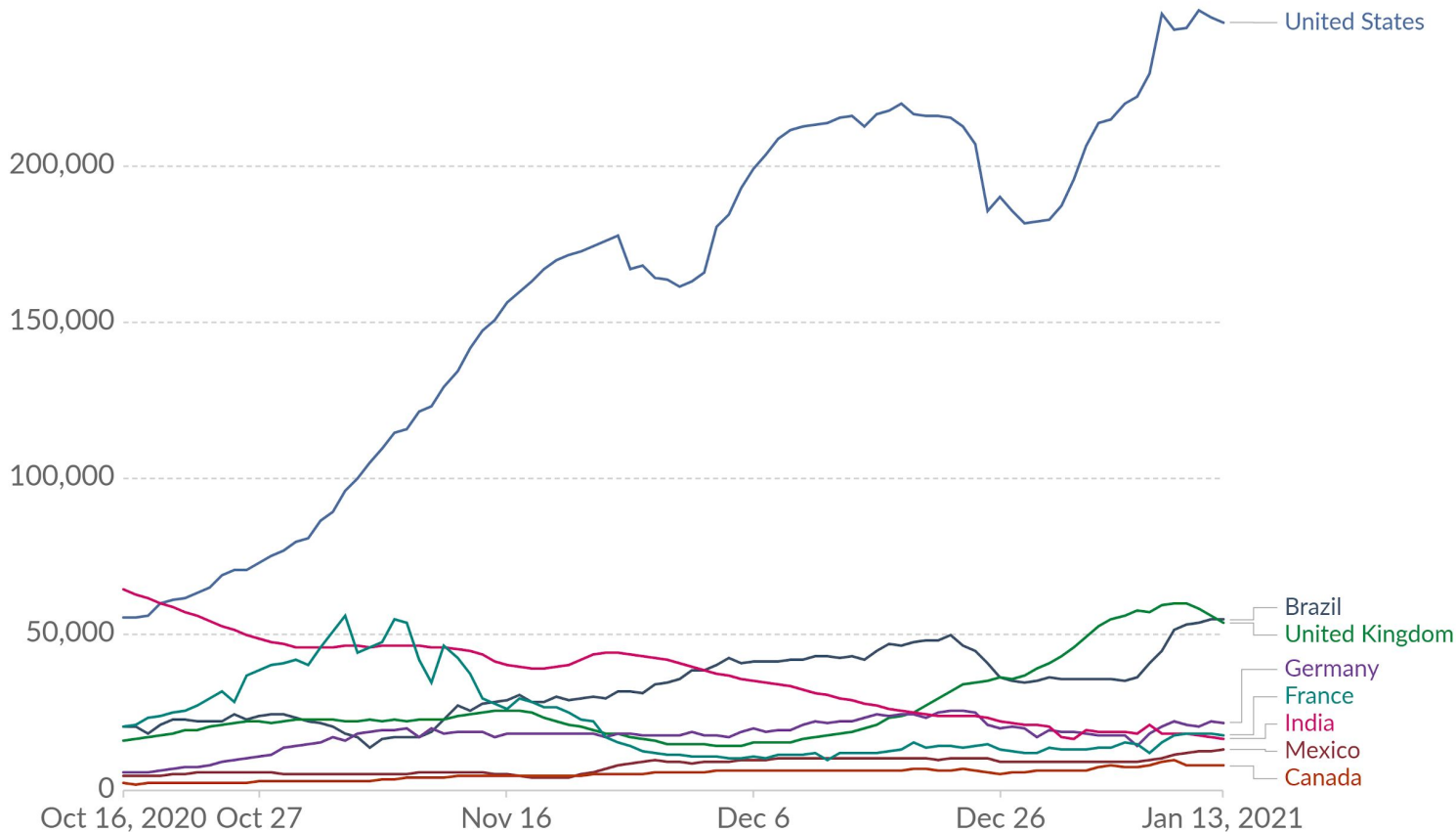
The number of reported cases increased by 390 cases. Percent positivity over the last 7 days decreased about a 1%. The percentage of cases hospitalized remained stable. The number of tests per day decreased by 546 tests. Healthcare capacity remained stable.

State Hospitalization Trends - Case Severity



Daily new confirmed COVID-19 cases

Shown is the rolling 7-day average. The number of confirmed cases is lower than the number of actual cases; the main reason for that is limited testing.



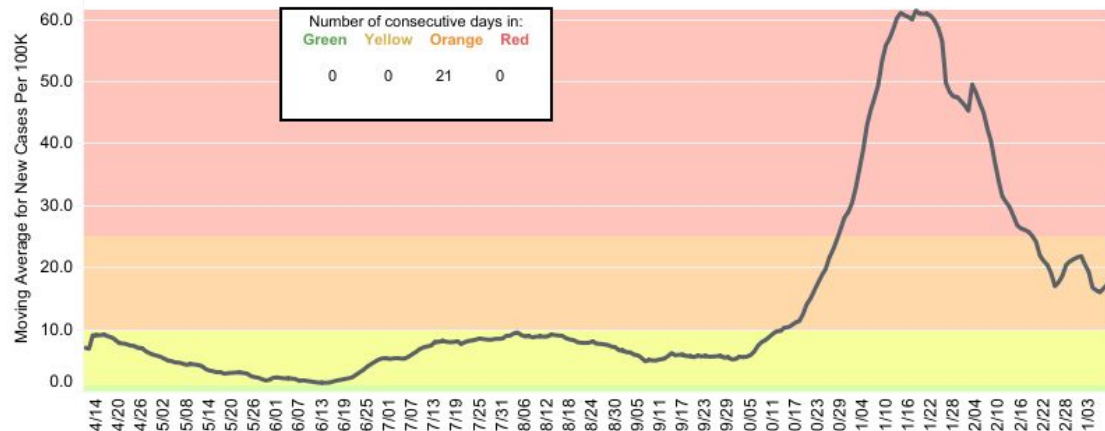
Source: Johns Hopkins University CSSE COVID-19 Data – Last updated 14 January, 13:02 (London time)

CC BY

County Dashboard: Oakland County

Notes

New Cases per 100K Data



Data for 1/9/2021:

New Cases per 100K: 14.48

Percent Positive: 7.17%

County
Oakland County

Show Data From:
4/11/2020 to 1/9/2021
and Null values

■ New Cases Moving Avera..

■ Percent Positive Moving A..

Data Source: <https://www.michigan.gov/coronavirus>

Moving average is based on previous 7 days, with a lag time of 3-days for data accuracy.

Reference lines are shown for risk of outbreak levels:

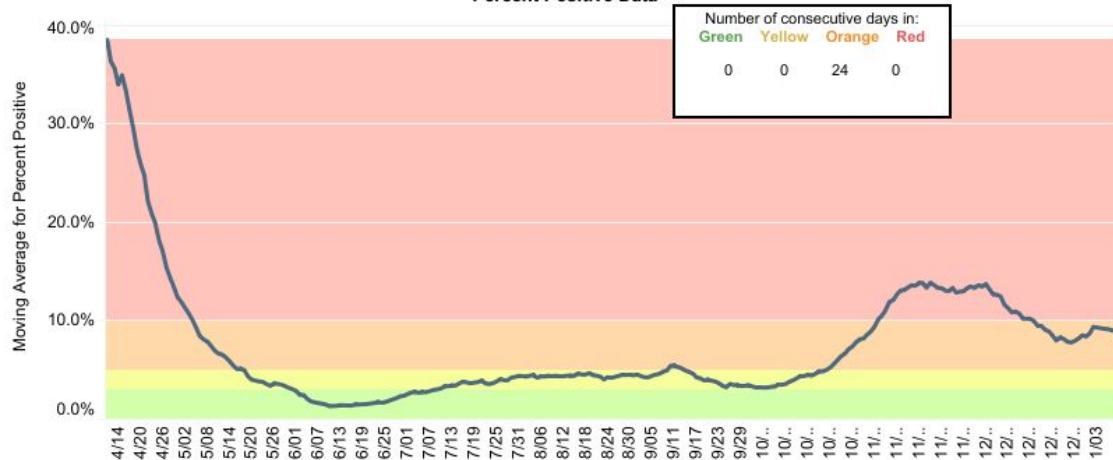
Red: >25 cases/100K
>10% positivity

Orange: 10-25 cases/100K
5-10% positivity

Yellow: 1-10 cases/100K
3-5% positivity

Green: <1 cases/100K
<3% positivity

Percent Positive Data



Developed in collaboration with
Bloomfield Hills School District and Munetrix





56,834
Total Cases¹

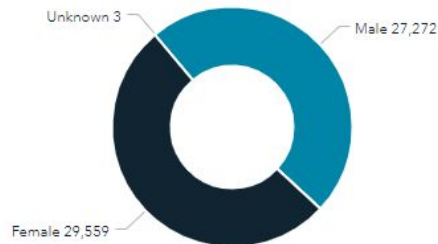
1,488
Total Deaths

48,864
Total Recovered²

Deaths by Gender



Cases by Gender

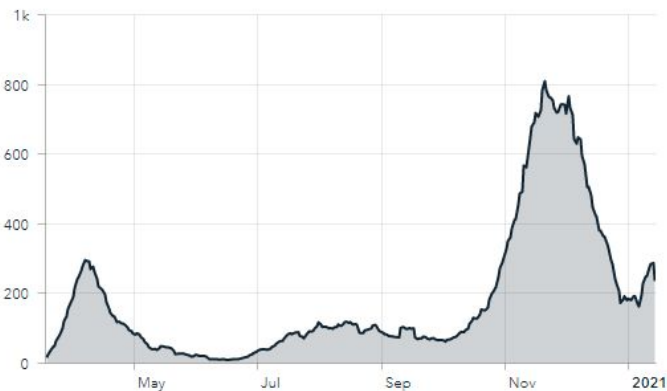


Counts by Day*

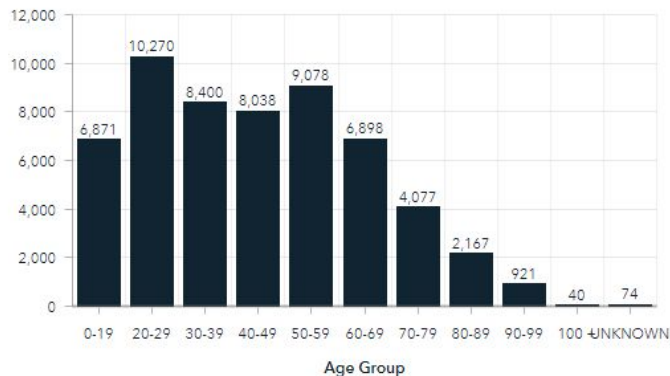
Date	Cases	Deaths
14-Jan	59	
13-Jan	236	
12-Jan	262	
11-Jan	340	2
10-Jan	146	
09-Jan	272	1
08-Jan	338	1
07-Jan	412	2
06-Jan	228	3

[Counts](#)
[About](#)

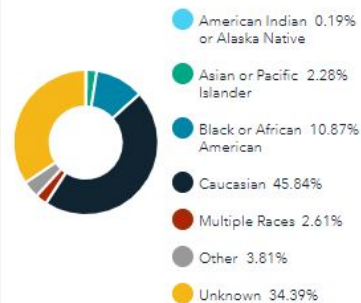
7 Day Average of Daily Cases


[7 Day Case Average](#)
[7 Day Death Average](#)
[Total Confirmed Cases](#)

Cases by Age Group


[Cases by Age Group](#)

Percentage of Cases by Race


[Cases by Race](#)
[Deaths by Race](#)



END OF SECTION

DISCUSSION

Part Two

Bond Update





**LONG-TERM
BHS RESIDENTS**



**BHS
SECONDARY
FAMILIES**



**BHS
ELEMENTARY
FAMILIES**



**ELECTED
OFFICIALS +
COMMUNITY
LEADERS**



**BHS
STUDENTS**



**BHS
TEACHERS + STAFF**

**SCOPE &
DESIGN**

Session Topics



**Safety &
Security**



**Building
Configurations**



**Instructional &
Support
Spaces**



**Unique and
Specialized
Programming,
Shared
Community
Spaces**



Review Work

Middle School Progress Update

COMPLETED PLANNING SESSIONS

- ✓ Mechanical + Electrical + Support
- ✓ Site Planning
- ✓ Leadership Team Areas + Office Spaces
- ✓ Physical Activity Areas + Community Spaces
- ✓ Middle School Teaming + Learning Communities
- ✓ Media Centers + STEM Areas
- ✓ Performing + Visual Arts
- ✓ FACS + Art, Special Education
- ✓ Middle School Staff
- ✓ Special Education Staff
- ✓ Support Services Staff



29 Sessions

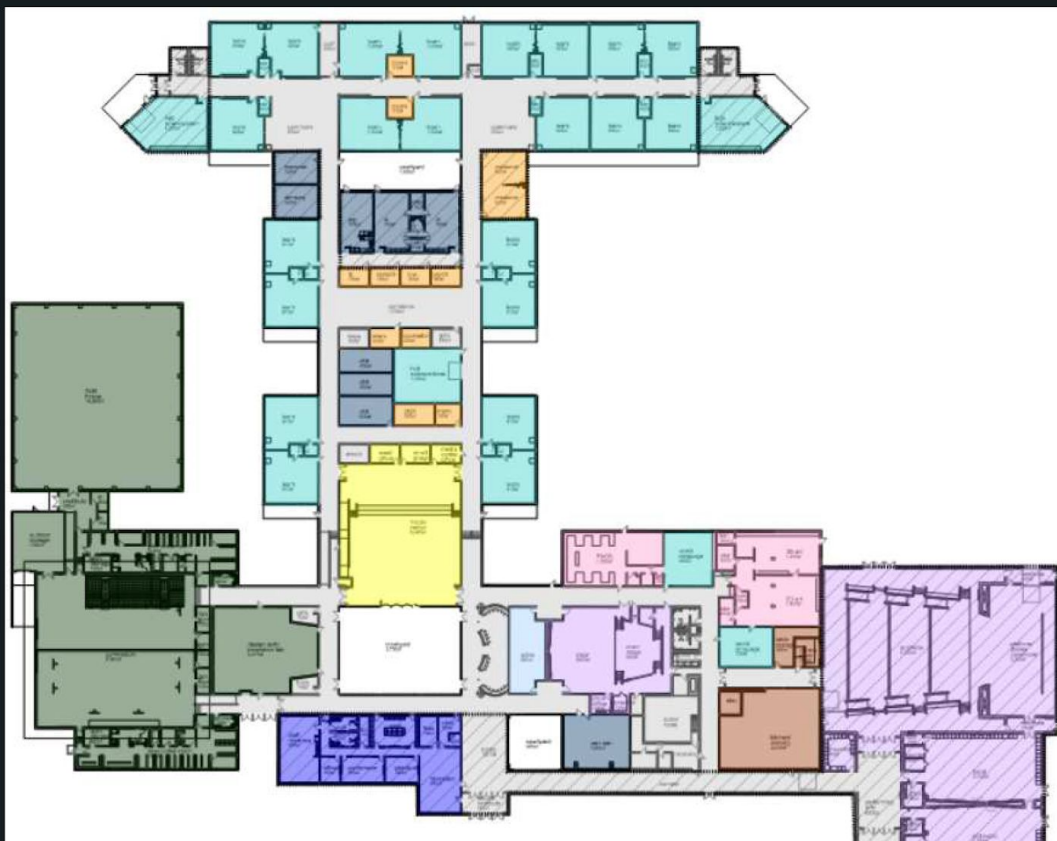
100+ Teachers/Staff

11 Support Staff

16 Administrators

Educator Driven

SOUTH HILLS MIDDLE SCHOOL



Building Facts:

**South Hills Middle School at
Bloomfield Hills Middle School Site**

114,866 sf of Renovations

40,866 sf of New Facility



NORTH HILLS MIDDLE SCHOOL

Building Facts:

**North Hills Middle School
at Lahser High School
Site**

98,760 sf of Renovations

88,780 sf of New Facility



Instruction Leading Construction

SPECIAL EDUCATION + SUPPORT SERVICES



Guiding Viewpoints:

Dignity + Privacy for All Students

Integrated Within General Education Spaces

Support Services and Restrooms in Proper Locations

Additional Exercise + Sensory Rooms



LEARNING COMMUNITIES

Guiding Viewpoints:

Sense of Belonging

Grade Level Based Layout

Team Teaching Strategy

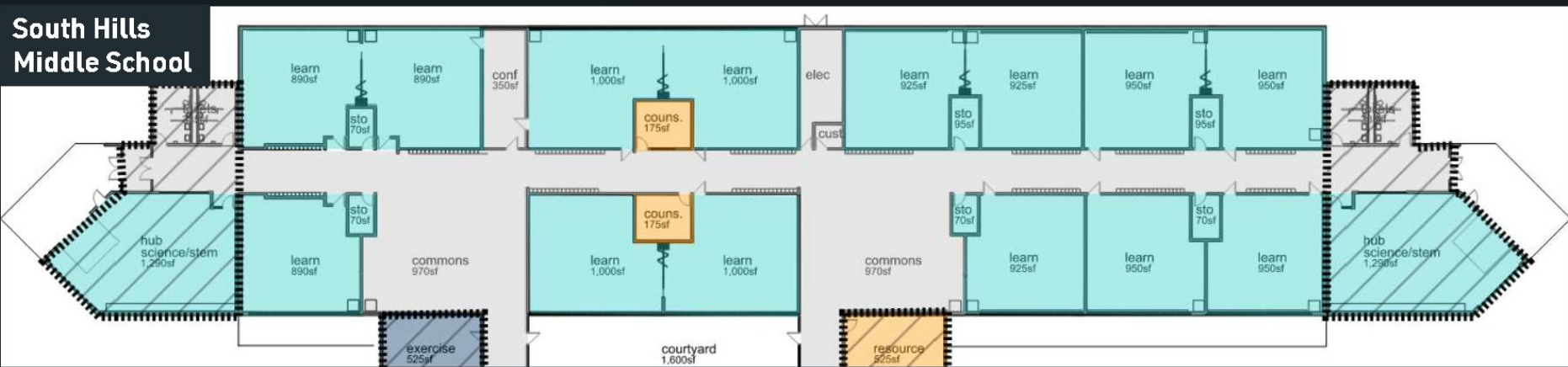
Integration of Support Services

Access to Common + Collaborative Spaces

North Hills Middle School



South Hills Middle School



LEARNING COMMUNITIES

North Hills Middle School



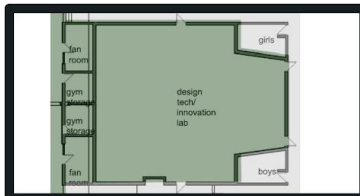
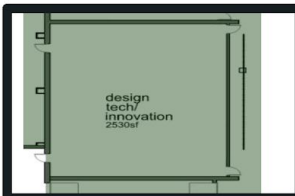
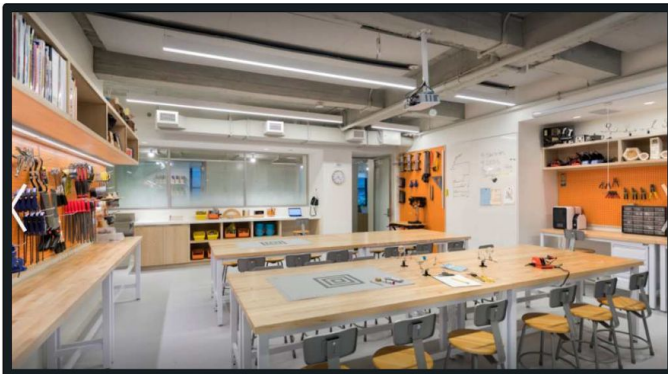
LEARNING COMMUNITIES



**South Hills
Middle School**

MEDIA CENTERS + COLLABORATION

North Hills Middle School



South Hills Middle School

Guiding Viewpoints:

Visible, Flexible + Accessible
Learning Hub of The Building
Technology and Audio-Visual
Systems

Dedicated STEAM Spaces

CLASSROOM TECHNOLOGY



Guiding Viewpoints:

Educator Input

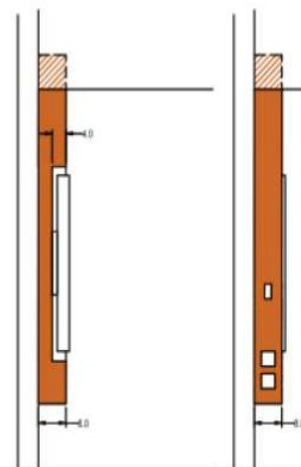
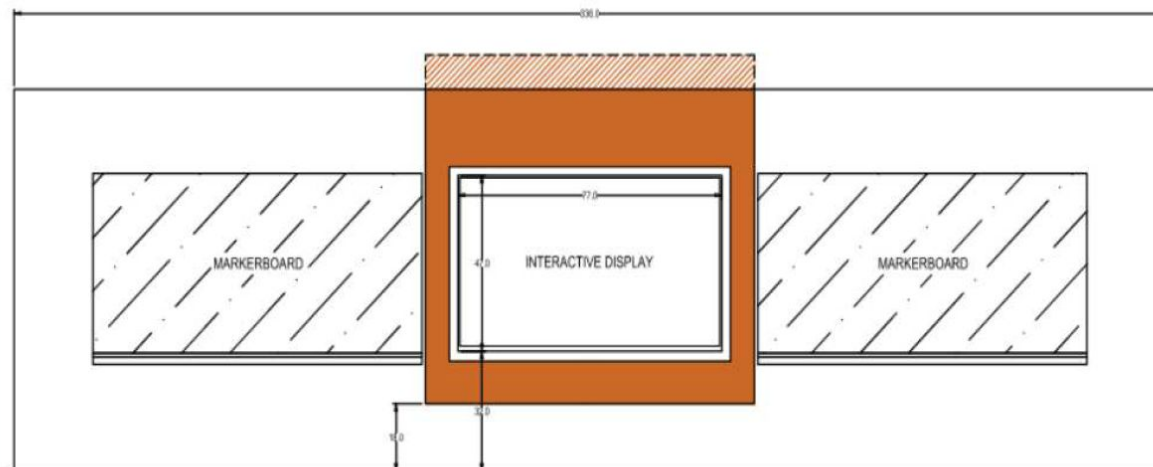
Future Proof

Versatile

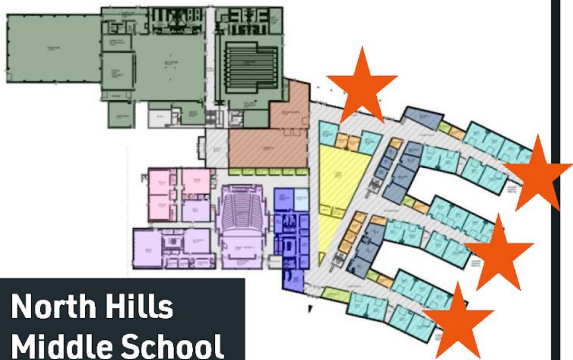
Interactive

Integrate Sound + Lighting

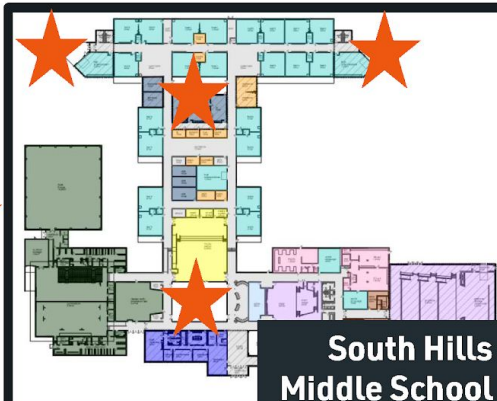
Service + Support



OUTDOOR LEARNING ENVIRONMENTS



North Hills
Middle School



South Hills
Middle School

Guiding Viewpoints:

Accessible + Connected

Play + Exploration

Health + Wellness

Existing Landscape

Covered Areas



PERFORMING ARTS

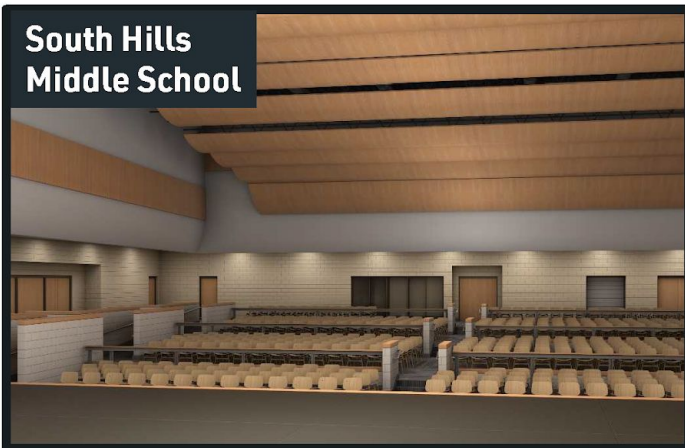
Guiding Viewpoints:

Dedicated Practice +
Performance Spaces

Renewed Focus

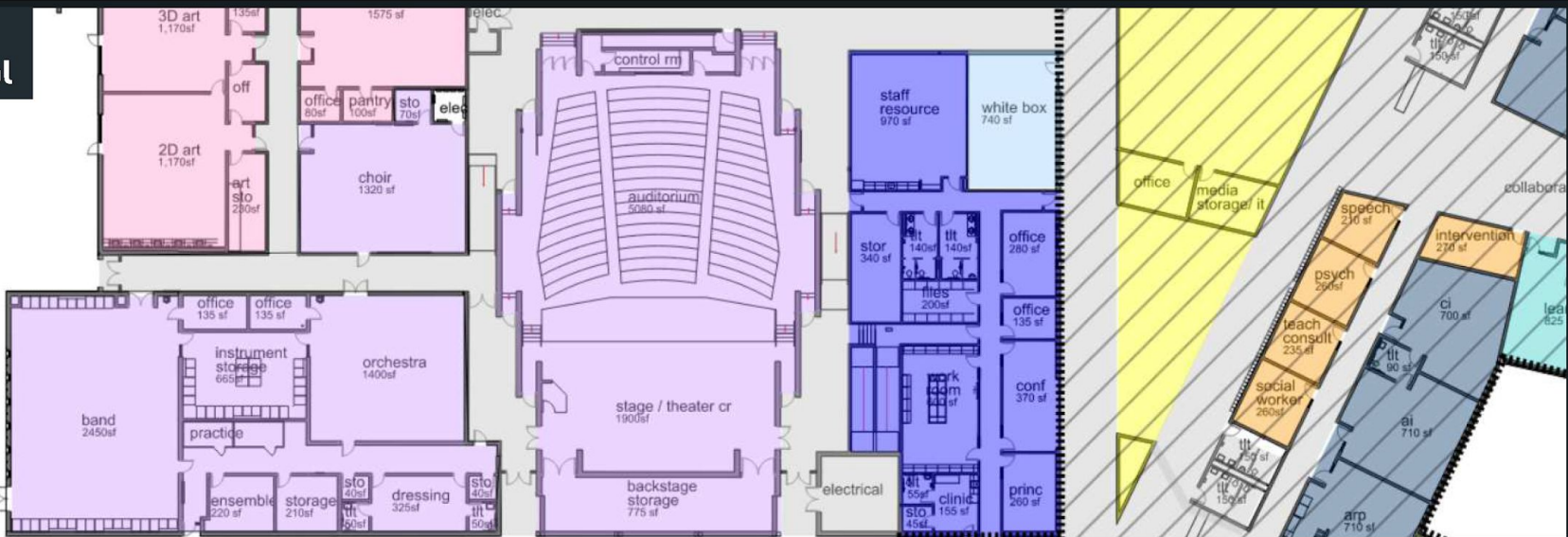
STEAM Curriculum

South Hills Middle School



South Hills Middle School

North Hills Middle School



PERFORMING ARTS

South Hills
Middle School



PERFORMING ARTS

South Hills
Middle School



- Encourage Passions
- Student Identity
- Exploration + Exposure
- Enhance Technology





Core Design Principles & Pedagogies

*Global
Competencies*

Agency by Design

*Making Across the
Curriculum*

Liberatory Design

*Portrait of a
Learner*

*Experiential &
Student-Centered*

*Inquiry-Based with
Hands on Learning*

Entrepreneurship

Project-Based

Culminating in 4-6 collaboratively created learning experiences for all students in grades 6-8 by the Interdisciplinary Learning Design Teams

BHS Strategic Plan: Goal Area 1 Connections

(Objective 1)

Providing experiential, student-centered learning, emphasizing a high level of effective research and inquiry throughout the curriculum.

(Objective 3)

Implementing multiple ways for students to show evidence of learning.

(Objective 5)

Ensuring ongoing opportunities for student choice and voice across all disciplines.

(Objective 7)

Educating the whole child and intentionally planning for the social/emotional well-being of all students.

Interdisciplinary Learning Design Teams



Continue to focus direction utilizing the strategic plan and the Portrait of a Learner, influencing the student experience and learning designs

- Collaborative research of new and emerging innovative experiential learning designs



Building a collaborative Instructional Innovation Study Team

- LST will establish & partner with 2-3 teams comprised of middle school teachers & building administration
- Each team of middle school teachers will participate as both researchers and lesson designers
- Teams will build shared-vision & theories of action
- Implementation of learning designs



Showcase & Making Learning Visible

- Documenting, celebrating, & sharing
- Develop a Data Collection Plan

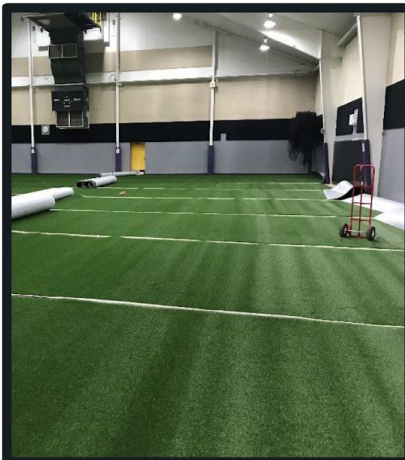


Conduct Real-Time Lesson Studies:

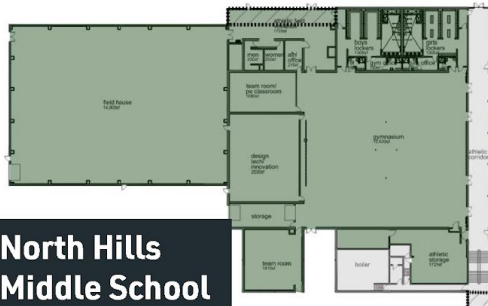
- Analysis of Instructional Design, Student Outcomes, & Student Feedback
- Reflection, debrief, and redesign



ATHLETICS



**North Hills
Middle School**

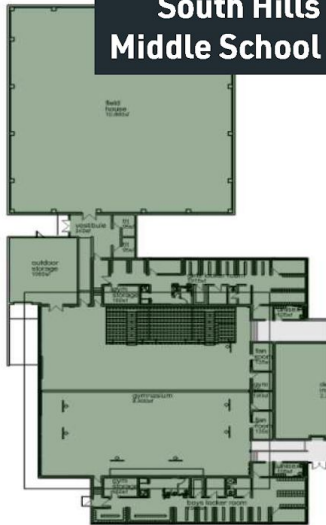


**South Hills
Middle School**

Amenities:

Indoor/Outdoor Turf Fields
Outdoor Fitness Trails
Tennis Court Reconstruction
Gym Renovations
Locker Room Improvements
Team + PE Classrooms

**South Hills
Middle School**



**North Hills
Middle School**

NATATORIUM

Amenities:

**Eight (8) Lanes, Diving Well +
Competition Ready**

Special Education Access + Needs

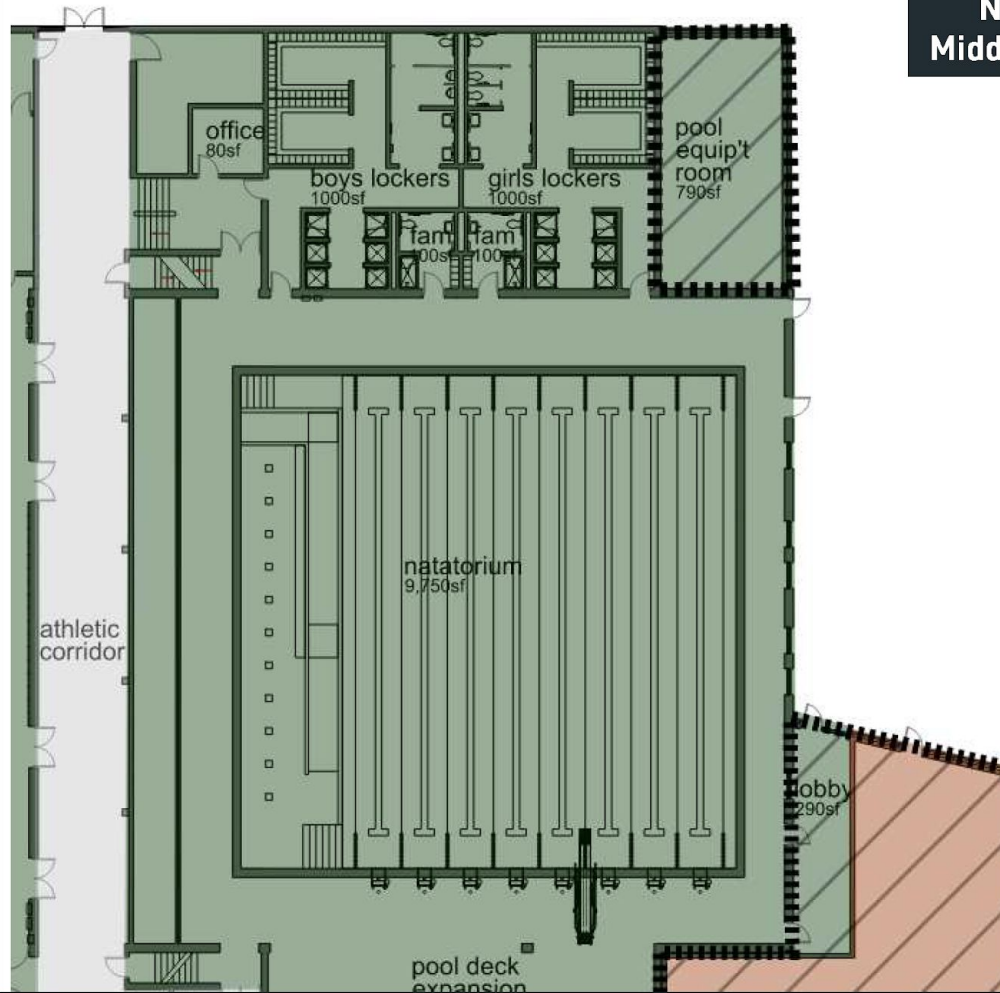
Fully Renovated

Community Access

Separate Entrance



North Hills Middle School



Schedule Update

SCHEDULE UPDATE

Up-Coming and Recent Events:

Lahser Abatement Bid and Award ✓

Lahser Selective Demolition Bid Phase ✓

Middle School North + South Conceptual Estimate ✓

Design Development Phase 1/21

North + South Design Development Estimate 2/21

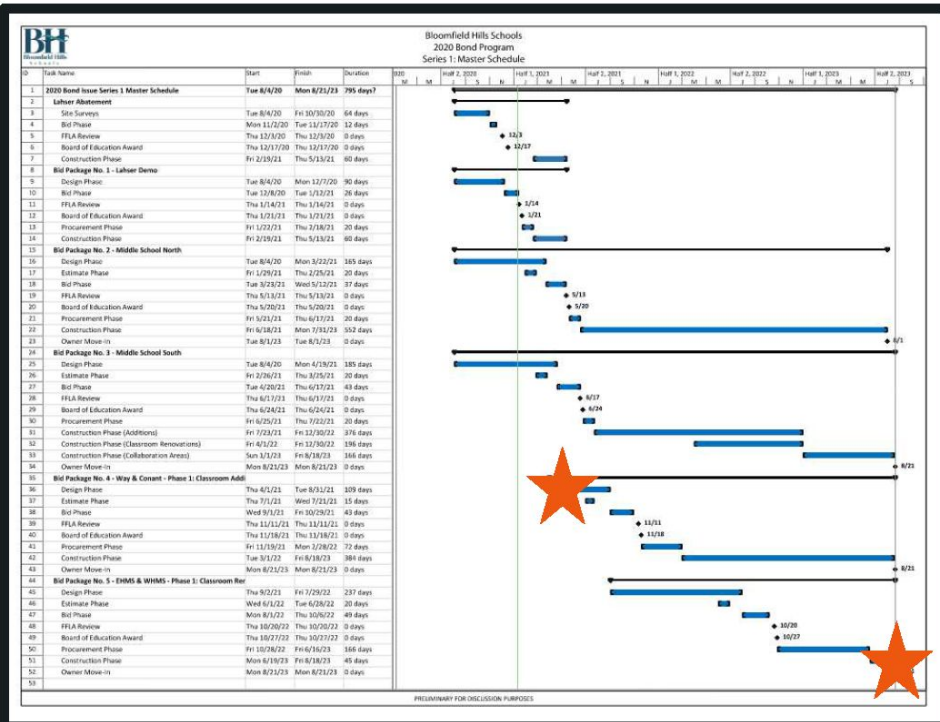
Middle School North + South Bid Phase 4/21

★ Elementary Design Kick-Off 4/21

North Hills + South Hills Middle School Award 6/21

Middle School North + South Groundbreaking 7/21

★ School Starts in New Configuration 9/23



Construction Update

CONSTRUCTION UPDATE

Completed Tasks:

- ✓ Site Surveys Completed
- ✓ Soil Borings
- ✓ Underground Pipe Inspections
- ✓ Temporary Fencing
- ✓ Middle School North Asbestos Abatement Underway
- ✓ Lahser Selective Demolition
- ✓ Asset Auction

Lahser High
School Site



Closing Comments



END OF SECTION

DISCUSSION