

# Bloomfield's Blueprint

*Returning to teaching &  
learning for the 2020-2021  
school year*



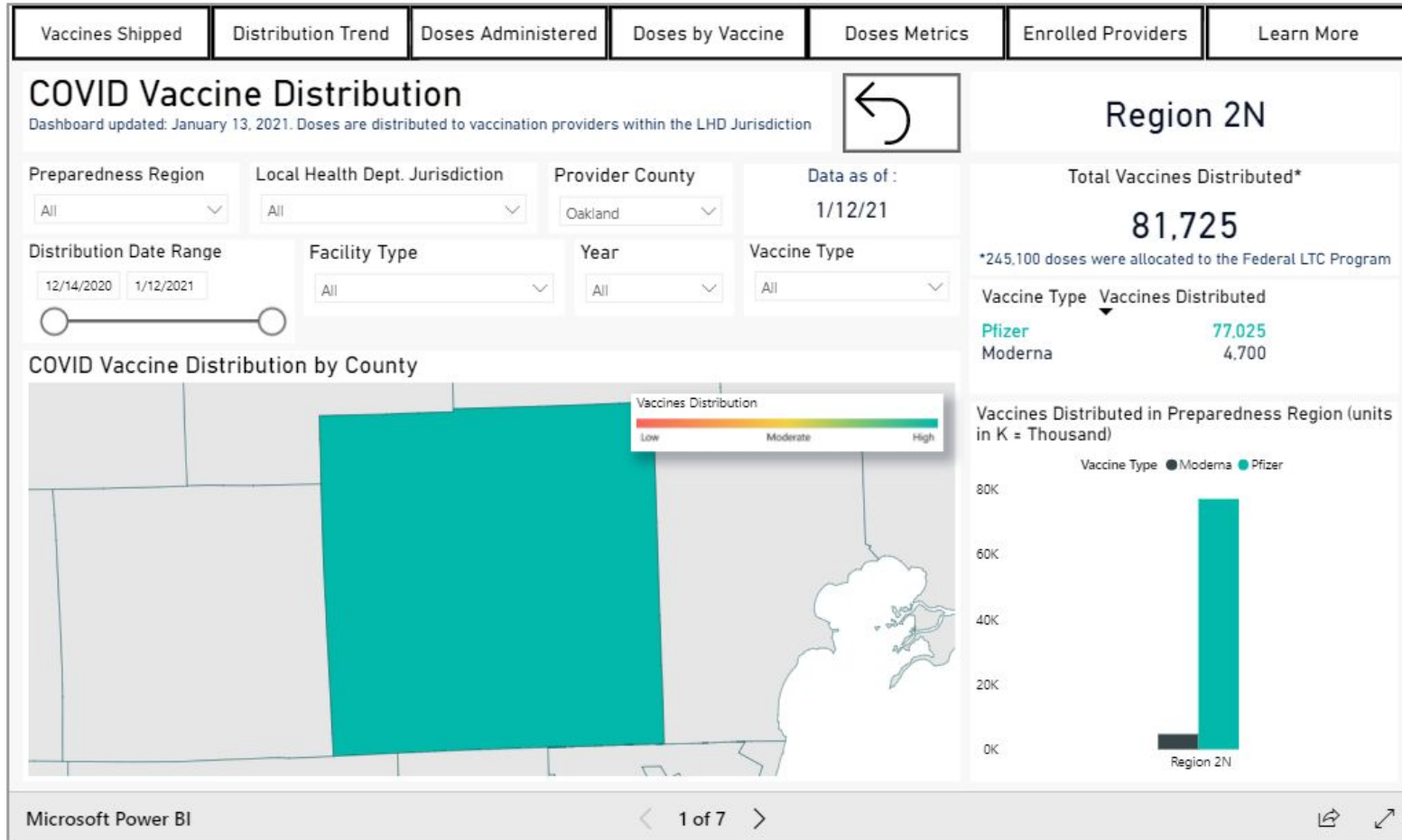
*January 14, 2021*



*Part One*  
COVID Update



# COVID-19 Vaccine Dashboard



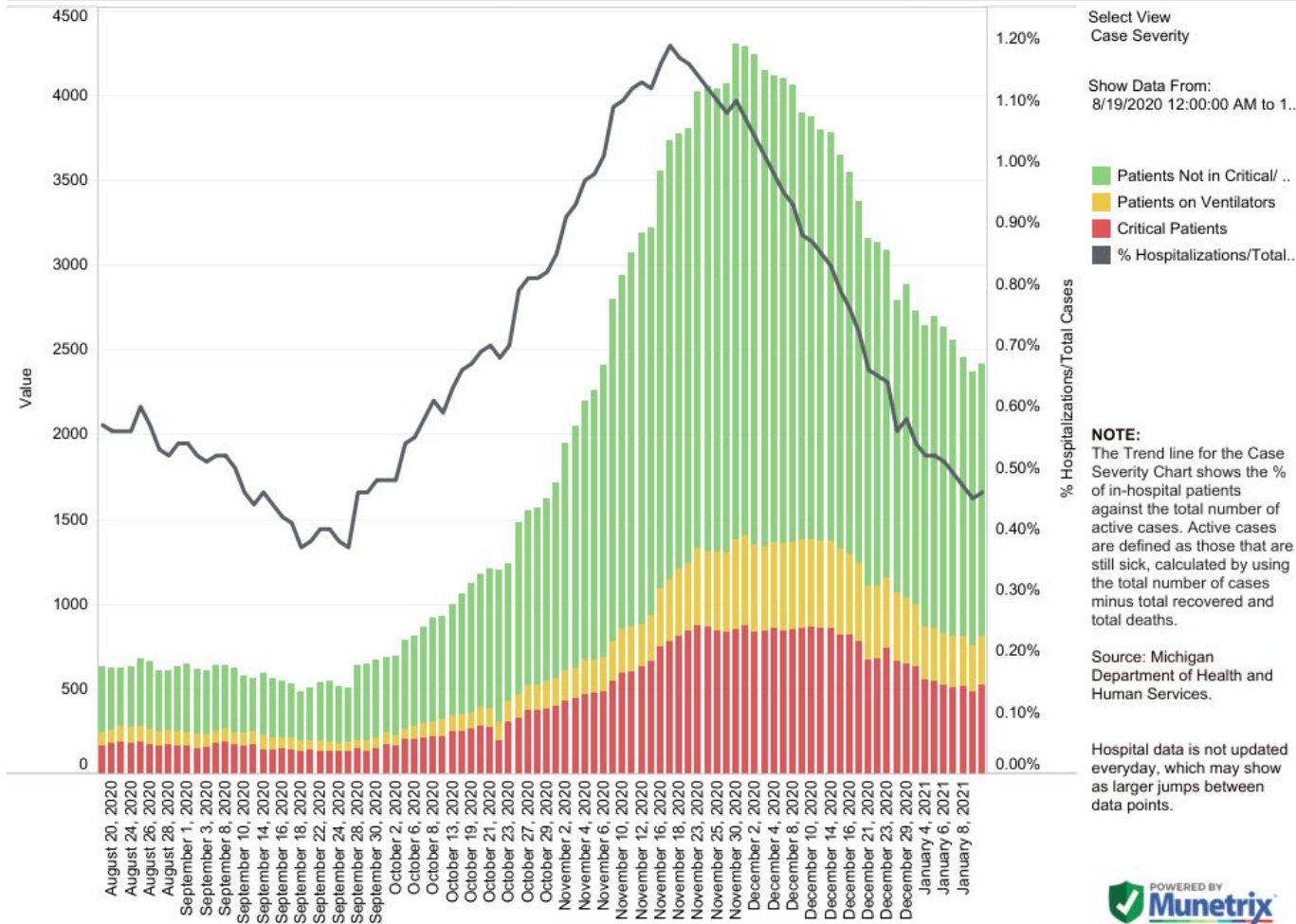
Reporting period: December 30 – January 12			
METRIC	RESULT	Trend	DEFINITION
Total “Confirmed and Probable” COVID-19 Cases Reported in Oakland County	4017	↑	“Confirmed”: laboratory-confirmed positive molecular viral test “Probable”: rapid-antigen positive viral test
Cases/Day per Million Population 7-Day Average 14-Day Average	218 238	↑	Average number of cases per day per million population over the given timeframe
14-Day Average Daily Case Counts	287	↑	The average number of cases per day reported over the last 14 days of the reporting period
14-Day Average Daily Death Counts	1.5	↑	The average number of deaths per day reported over the last 14 days of the reporting period
14-Day Average Tests Per Day	4490	↑	The average number of diagnostic tests administered to Oakland residents over the last 14 days of the reporting period
Percentage of Cases Hospitalized in the Last 14 Days	1.9%	→	The percentage of cases (confirmed and probable) that reported being hospitalized over the last 14 days of the reporting period
Percent Positivity (7 days)	8.11%	↓	Percentage of reported positive tests over the last 7 days (January 5 – January 11)
Percent Positivity (28 days)	8.51%	↓	Percentage of reported positive tests over the last 28 days (December 15 – January 11)
Healthcare Capacity Strength	STABLE	→	Assessment of bed availability and hospital capacity
Testing, Tracing, Containment Infrastructure	STRONG	→	Assessment of testing availability and OCHD contact tracing capability
County Level Risk Determination			Per MDHHS, this metric will no longer be used to make decisions about opening/closing schools.

## Reporting Period: December 30 - January 12

Total Oakland County Cases Reported by Age Group					
Age Group	Total Cases	Trend	Age Group	Total Cases	Trend
0-4	63	→	50-59	580	→
5-9	82	↑	60-69	390	→
10-13	114	↑	70-79	236	→
14-18	281	↑	80-89	132	↓
19-29	877	↑	90+	58	→
30-39	618	→	Unknown	22	
40-49	564	↑			

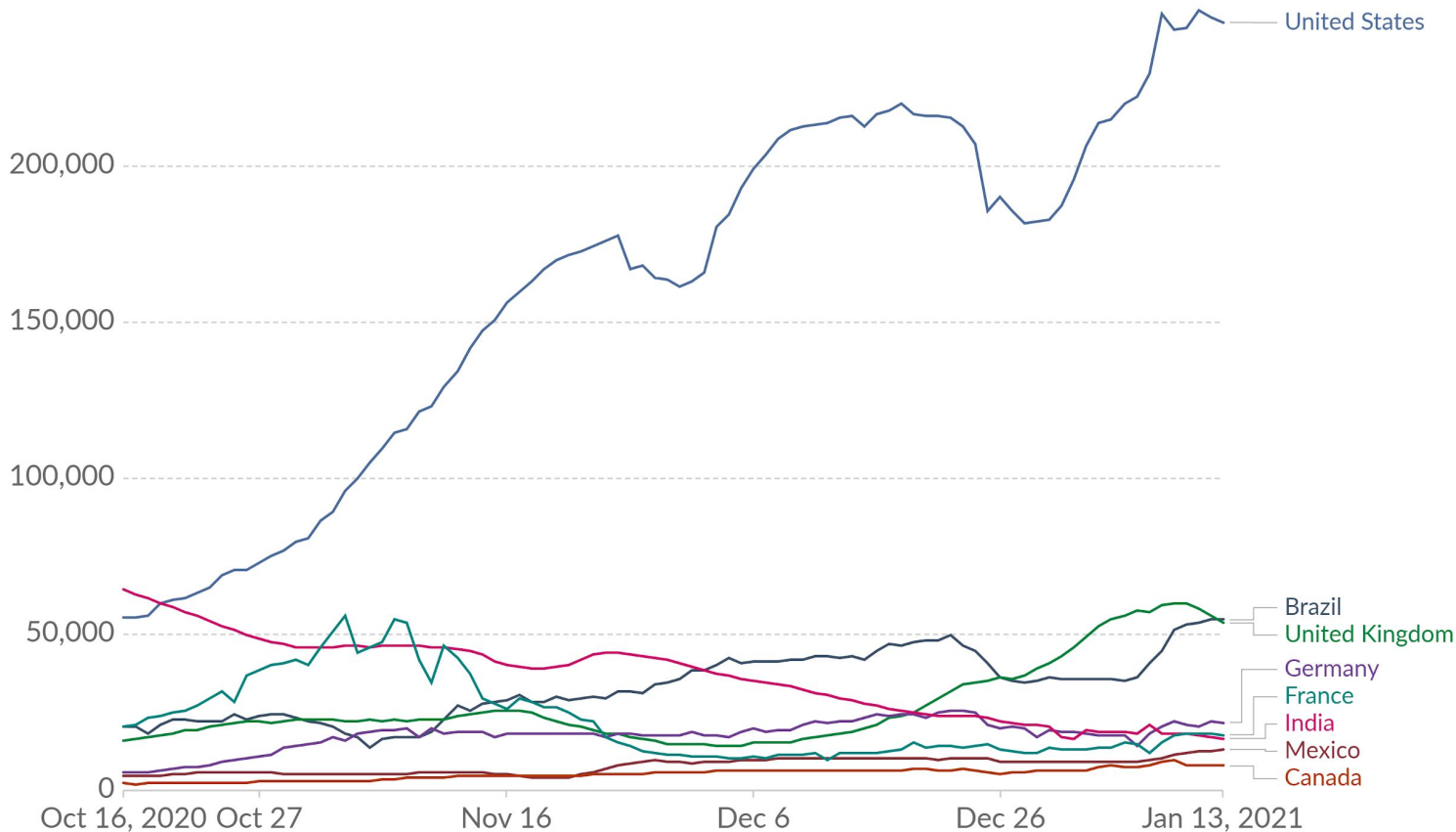
The number of reported cases increased by 390 cases. Percent positivity over the last 7 days decreased about a 1%. The percentage of cases hospitalized remained stable. The number of tests per day decreased by 546 tests. Healthcare capacity remained stable.

# State Hospitalization Trends - Case Severity



# Daily new confirmed COVID-19 cases

Shown is the rolling 7-day average. The number of confirmed cases is lower than the number of actual cases; the main reason for that is limited testing.



Source: Johns Hopkins University CSSE COVID-19 Data – Last updated 14 January, 13:02 (London time)

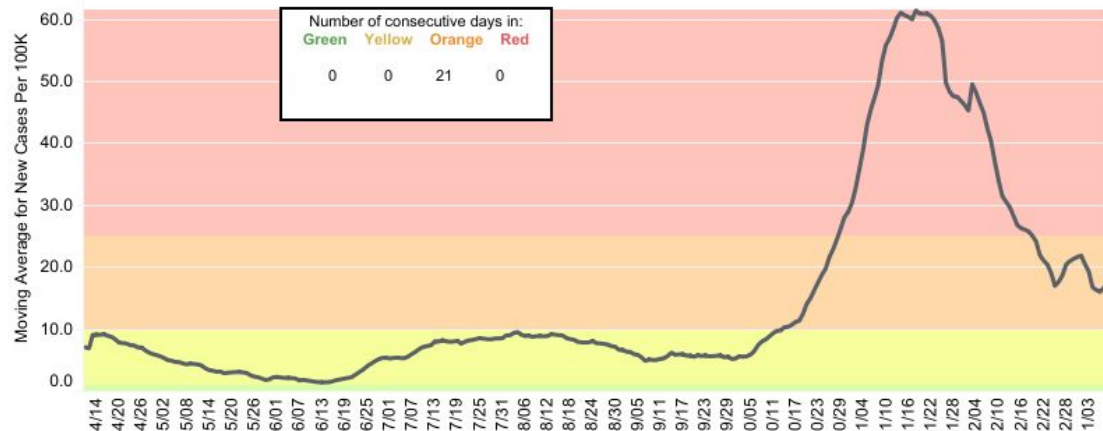
CC BY



# County Dashboard: Oakland County

Notes

## New Cases per 100K Data



Data for 1/9/2021:

New Cases per 100K: 14.48

Percent Positive: 7.17%

County  
Oakland County

Show Data From:  
4/11/2020 to 1/9/2021  
and Null values

■ New Cases Moving Avera..

■ Percent Positive Moving A..

Data Source: <https://www.michigan.gov/coronavirus>

Moving average is based on previous 7 days, with a lag time of 3-days for data accuracy.

Reference lines are shown for risk of outbreak levels:

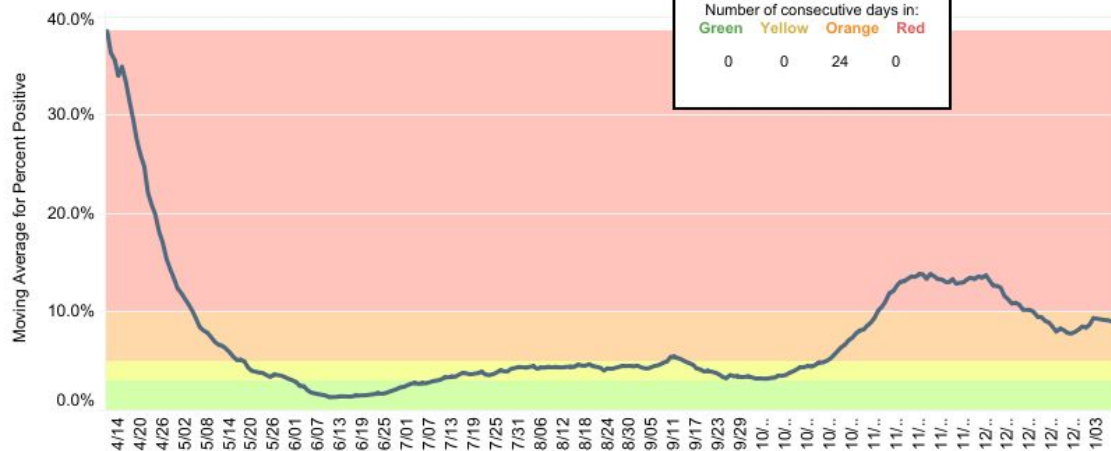
Red: >25 cases/100K  
>10% positivity

Orange: 10-25 cases/100K  
5-10% positivity

Yellow: 1-10 cases/100K  
3-5% positivity

Green: <1 cases/100K  
<3% positivity

## Percent Positive Data



Developed in collaboration with  
Bloomfield Hills School District and Munetrix





## 56,834

Total Cases<sup>1</sup>

## 1,488

Total Deaths

## 48,864

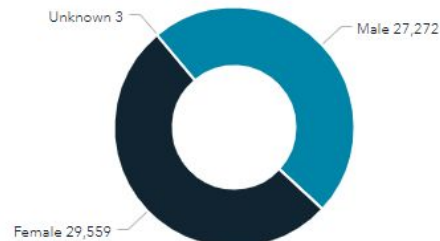
Total Recovered<sup>2</sup>

[Counts](#)
[About](#)

### Deaths by Gender



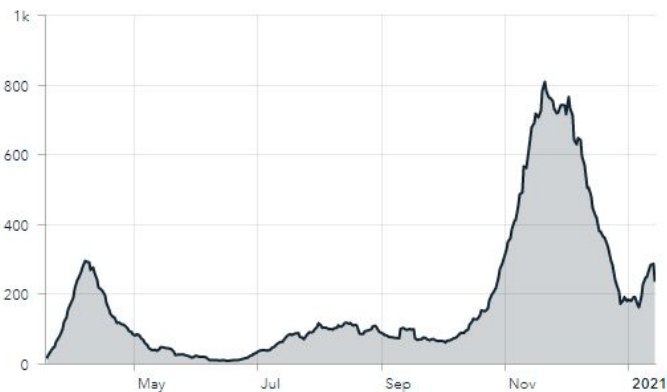
### Cases by Gender



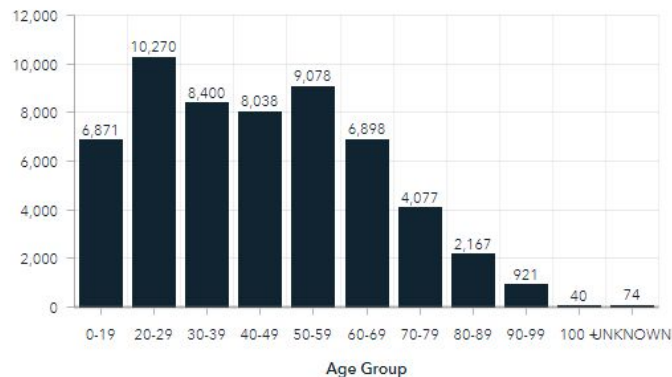
### Counts by Day\*

Date	Cases	Deaths
14-Jan	59	
13-Jan	236	
12-Jan	262	
11-Jan	340	2
10-Jan	146	
09-Jan	272	1
08-Jan	338	1
07-Jan	412	2
06-Jan	228	3

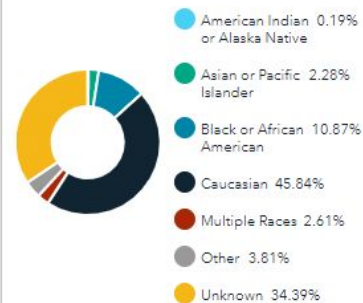
### 7 Day Average of Daily Cases


[7 Day Case Average](#)
[7 Day Death Average](#)
[Total Confirmed Cases](#)

### Cases by Age Group


[Cases by Age Group](#)

### Percentage of Cases by Race


[Cases by Race](#)
[Deaths by Race](#)





END OF SECTION

# DISCUSSION