

# Bloomfield's Blueprint

*Returning to teaching &  
learning for the 2020-2021  
school year*



*January 14, 2021*



# *Part Two*

## Bond Update





**LONG-TERM  
BHS RESIDENTS**



**BHS  
SECONDARY  
FAMILIES**



**BHS  
ELEMENTARY  
FAMILIES**



**ELECTED  
OFFICIALS +  
COMMUNITY  
LEADERS**



**BHS  
STUDENTS**



**BHS  
TEACHERS + STAFF**

**SCOPE &  
DESIGN**

## Session Topics



**Safety &  
Security**



**Building  
Configurations**



**Instructional &  
Support  
Spaces**



**Unique and  
Specialized  
Programming,  
Shared  
Community  
Spaces**



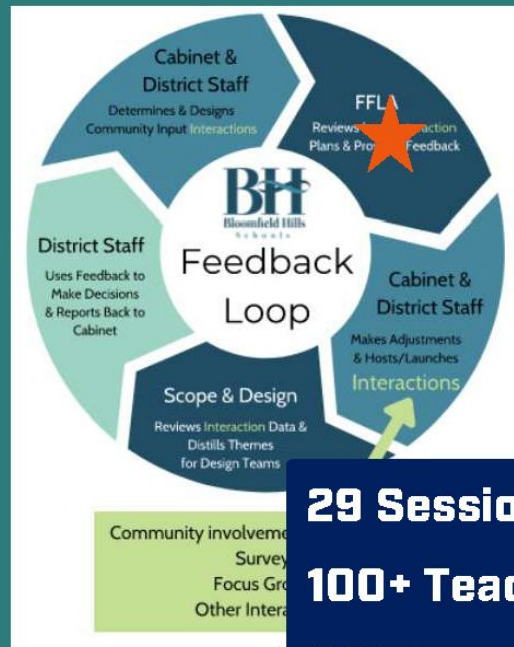
**Review Work**

# **Middle School Progress Update**



# COMPLETED PLANNING SESSIONS

- ✓ Mechanical + Electrical + Support
- ✓ Site Planning
- ✓ Leadership Team Areas + Office Spaces
- ✓ Physical Activity Areas + Community Spaces
- ✓ Middle School Teaming + Learning Communities
- ✓ Media Centers + STEM Areas
- ✓ Performing + Visual Arts
- ✓ FACS + Art, Special Education
- ✓ Middle School Staff
- ✓ Special Education Staff
- ✓ Support Services Staff



**29 Sessions**

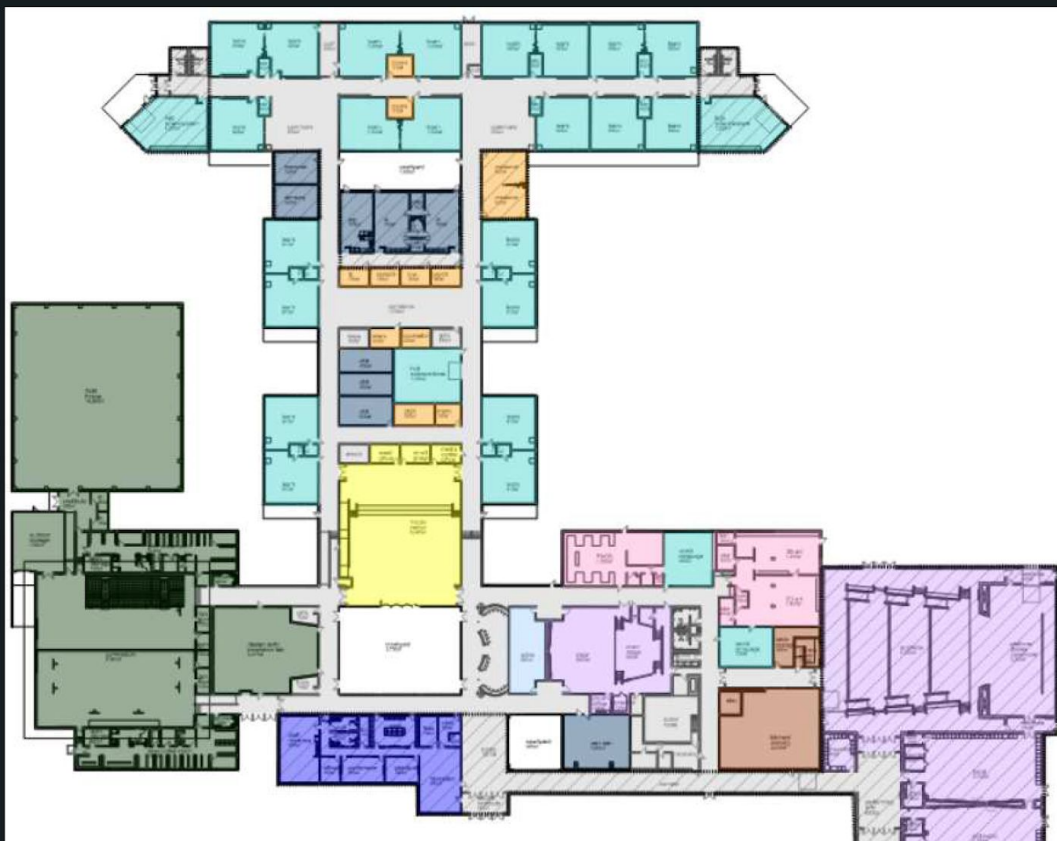
**100+ Teachers/Staff**

**11 Support Staff**

**16 Administrators**

**Educator Driven**

# SOUTH HILLS MIDDLE SCHOOL



## Building Facts:

**South Hills Middle School at  
Bloomfield Hills Middle School Site**

**114,866 sf of Renovations**

**40,866 sf of New Facility**



# NORTH HILLS MIDDLE SCHOOL

## Building Facts:

**North Hills Middle School  
at Lahser High School  
Site**

**98,760 sf of Renovations**

**88,780 sf of New Facility**



**Instruction Leading Construction**



# SPECIAL EDUCATION + SUPPORT SERVICES



## Guiding Viewpoints:

**Dignity + Privacy for All Students**

**Integrated Within General Education Spaces**

**Support Services and Restrooms in Proper Locations**

**Additional Exercise + Sensory Rooms**





## LEARNING COMMUNITIES

### Guiding Viewpoints:

## Sense of Belonging

## Grade Level Based Layout

## Team Teaching Strategy

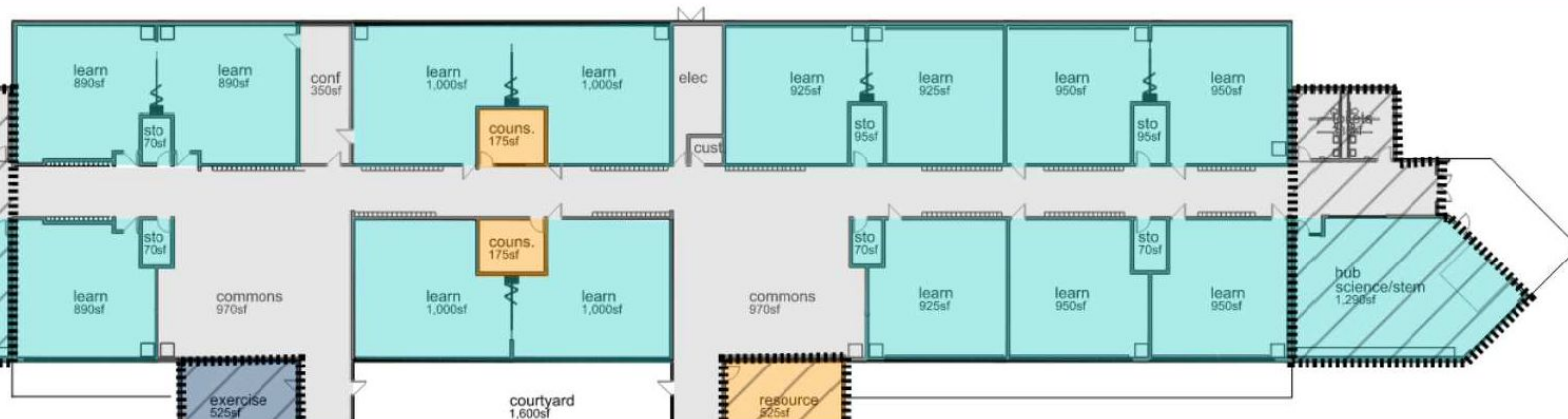
## Integration of Support Services

## Access to Common + Collaborative Spaces



**North Hills  
Middle School**

## South Hills Middle School



# North Hills Middle School





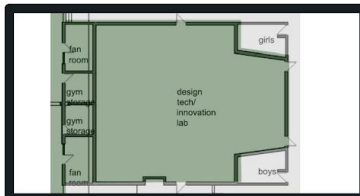
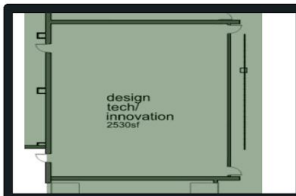
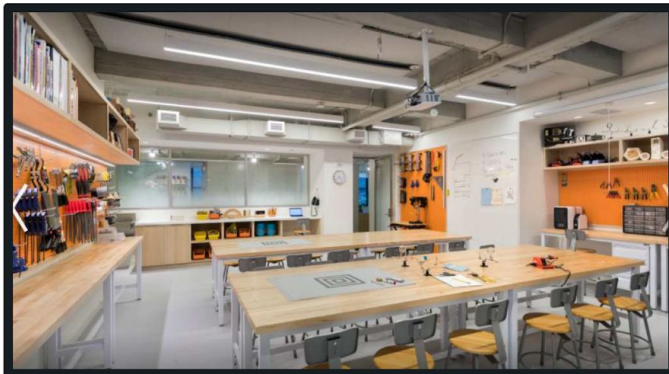
# LEARNING COMMUNITIES



**South Hills  
Middle School**

# MEDIA CENTERS + COLLABORATION

## North Hills Middle School



## South Hills Middle School

### Guiding Viewpoints:

**Visible, Flexible + Accessible**

**Learning Hub of The Building**

**Technology and Audio-Visual  
Systems**

**Dedicated STEAM Spaces**



# CLASSROOM TECHNOLOGY



## Guiding Viewpoints:

**Educator Input**

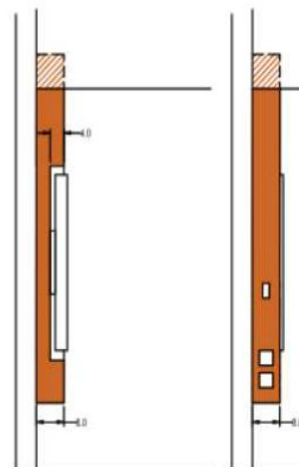
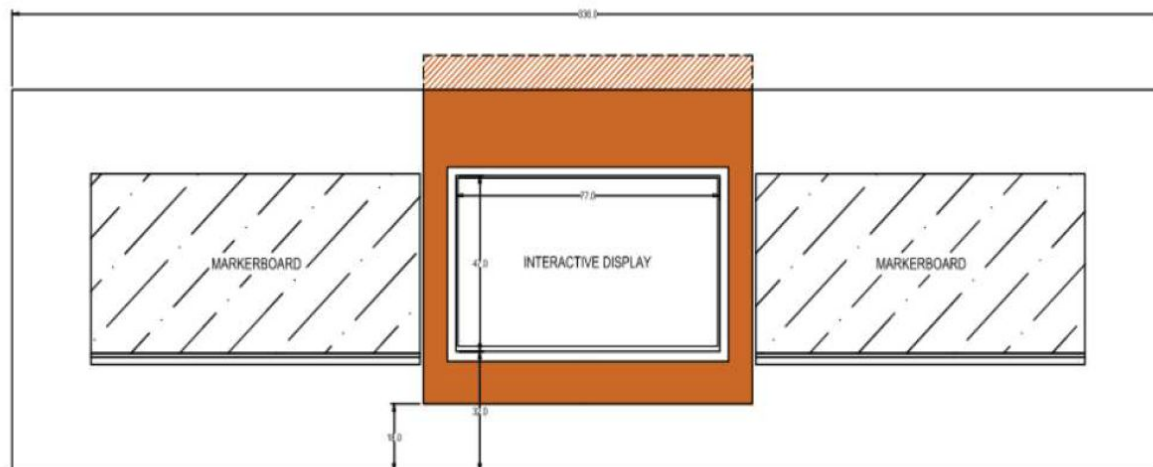
**Future Proof**

**Versatile**

**Interactive**

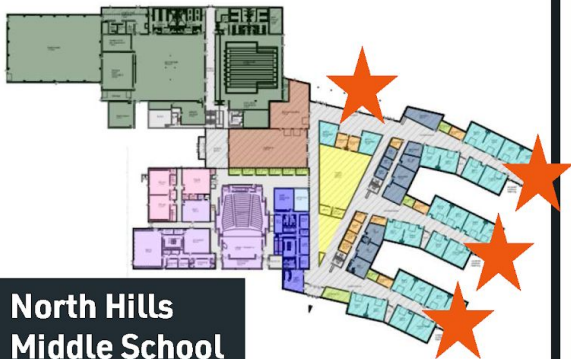
**Integrate Sound + Lighting**

**Service + Support**





# OUTDOOR LEARNING ENVIRONMENTS



North Hills  
Middle School



South Hills  
Middle School

## Guiding Viewpoints:

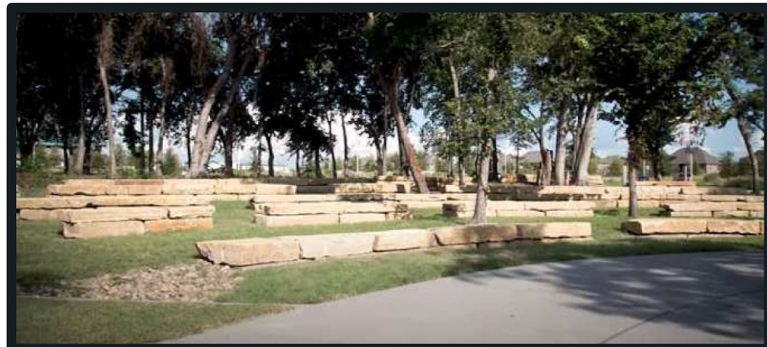
**Accessible + Connected**

**Play + Exploration**

**Health + Wellness**

**Existing Landscape**

**Covered Areas**



## PERFORMING ARTS

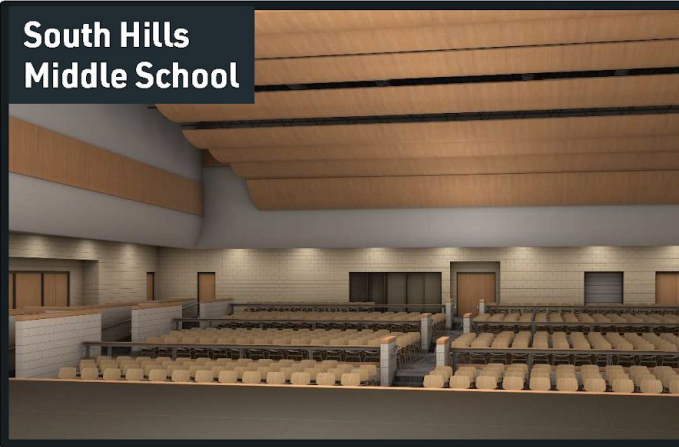
## Guiding Viewpoints:

## Dedicated Practice + Performance Spaces

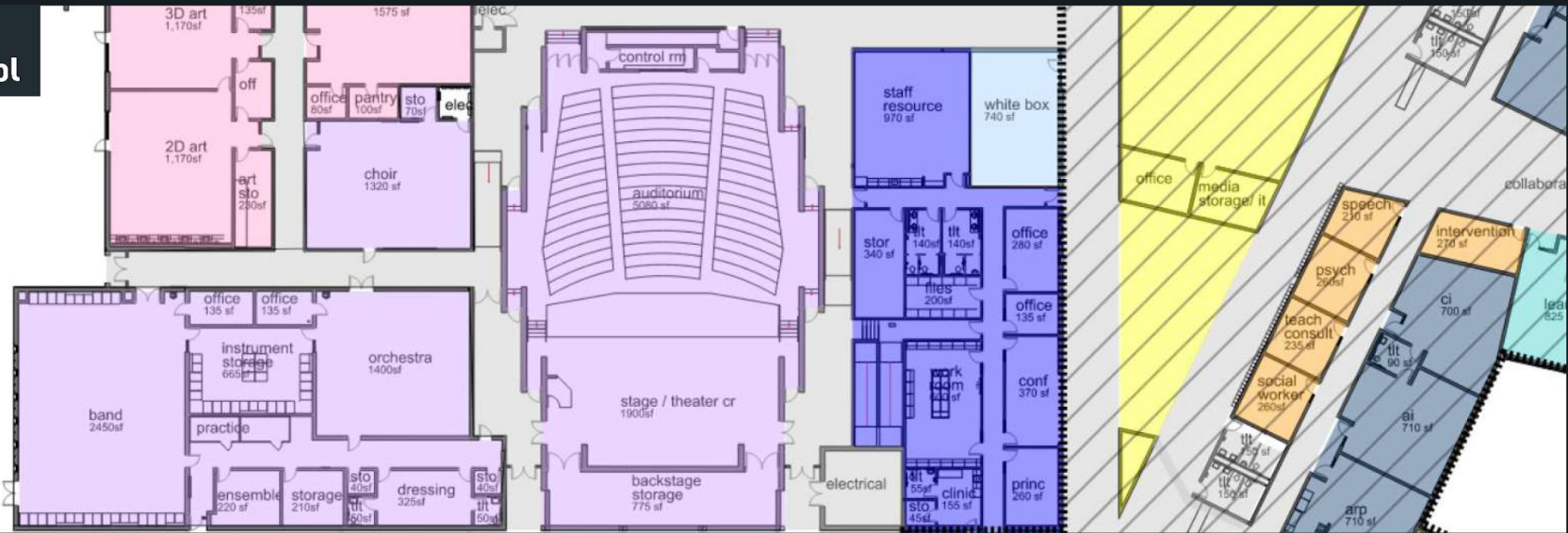
## Renewed Focus

## STEAM Curriculum

## South Hills Middle School



## North Hills Middle School





# PERFORMING ARTS

South Hills  
Middle School



# PERFORMING ARTS

South Hills  
Middle School





- Encourage Passions
- Student Identity
- Exploration + Exposure
- Enhance Technology







## *Core Design Principles & Pedagogies*

*Global  
Competencies*

*Agency by Design*

*Making Across the  
Curriculum*

*Liberatory Design*

*Portrait of a  
Learner*

*Experiential &  
Student-Centered*

*Inquiry-Based with  
Hands on Learning*

*Entrepreneurship*

*Project-Based*

*Culminating in 4-6 collaboratively created learning experiences for all students in grades 6-8 by the Interdisciplinary Learning Design Teams*

## **BHS Strategic Plan: Goal Area 1 Connections**

(Objective 1)

*Providing experiential, student-centered learning, emphasizing a high level of effective research and inquiry throughout the curriculum.*

(Objective 3)

*Implementing multiple ways for students to show evidence of learning.*

(Objective 5)

*Ensuring ongoing opportunities for student choice and voice across all disciplines.*

(Objective 7)

*Educating the whole child and intentionally planning for the social/emotional well-being of all students.*

# Interdisciplinary Learning Design Teams



Continue to focus direction utilizing the strategic plan and the Portrait of a Learner, influencing the student experience and learning designs

- Collaborative research of new and emerging innovative experiential learning designs



Building a collaborative Instructional Innovation Study Team

- LST will establish & partner with 2-3 teams comprised of middle school teachers & building administration
- Each team of middle school teachers will participate as both researchers and lesson designers
- Teams will build shared-vision & theories of action
- Implementation of learning designs



Showcase & Making Learning Visible

- Documenting, celebrating, & sharing
- Develop a Data Collection Plan



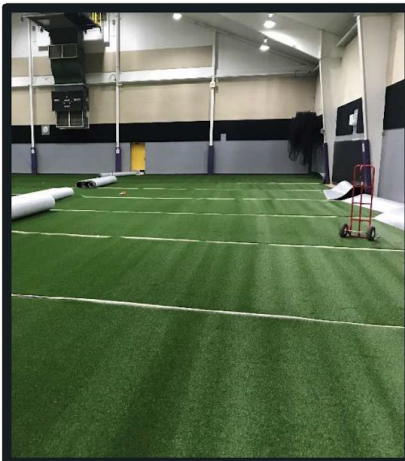
Conduct Real-Time Lesson Studies:

- Analysis of Instructional Design, Student Outcomes, & Student Feedback
- Reflection, debrief, and redesign





# ATHLETICS



**North Hills  
Middle School**

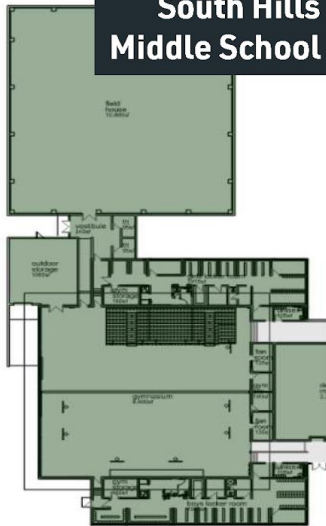


**South Hills  
Middle School**

## Amenities:

**Indoor/Outdoor Turf Fields**  
**Outdoor Fitness Trails**  
**Tennis Court Reconstruction**  
**Gym Renovations**  
**Locker Room Improvements**  
**Team + PE Classrooms**

**South Hills  
Middle School**



**North Hills  
Middle School**

# NATATORIUM

## Amenities:

**Eight (8) Lanes, Diving Well +  
Competition Ready**

**Special Education Access + Needs**

**Fully Renovated**

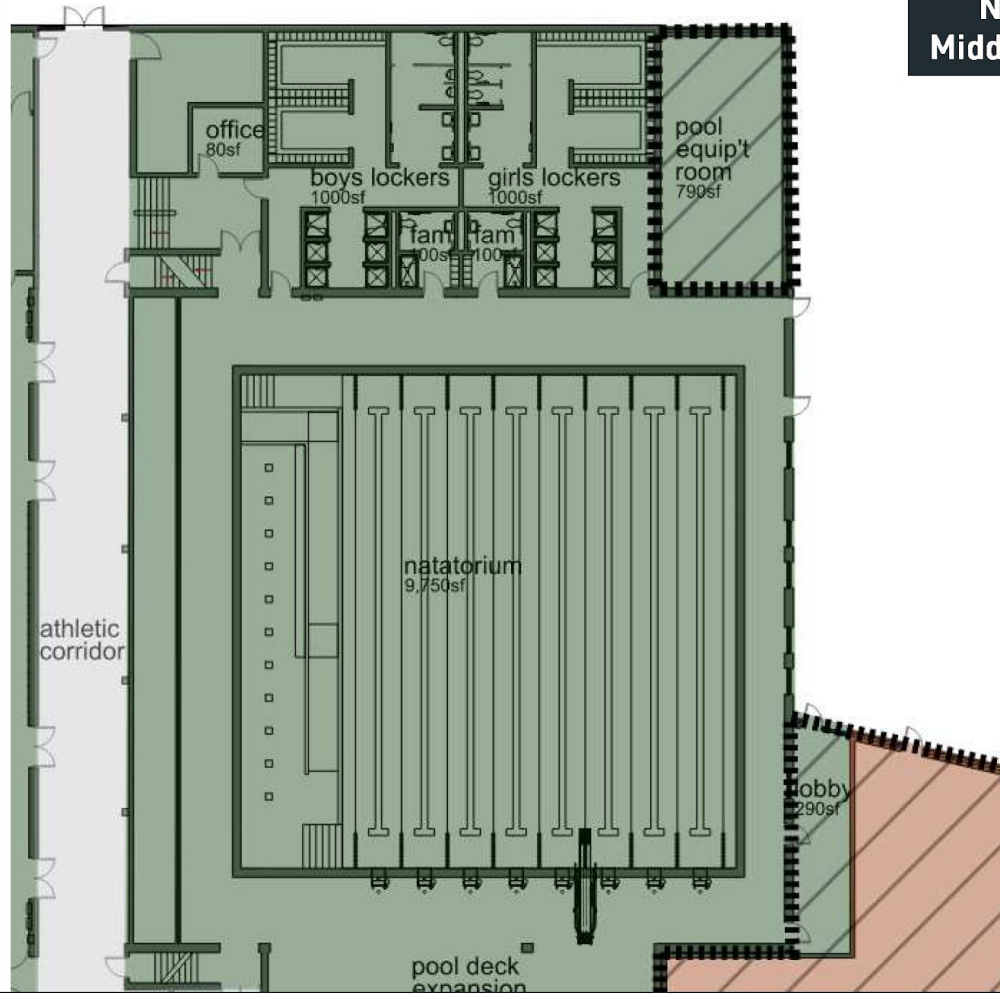
**Community Access**

**Separate Entrance**



**North Hills  
Middle School**

**North Hills  
Middle School**



# Schedule Update



# SCHEDULE UPDATE

## Up-Coming and Recent Events:

Lahser Abatement Bid and Award ✓

Lahser Selective Demolition Bid Phase ✓

Middle School North + South Conceptual Estimate ✓

Design Development Phase 1/21

North + South Design Development Estimate 2/21

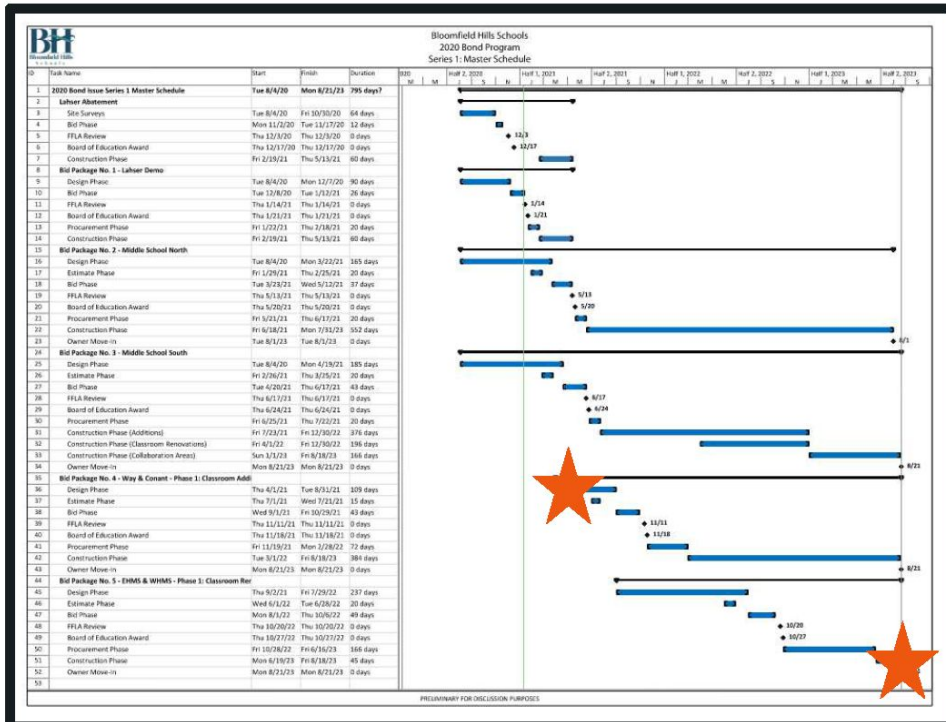
Middle School North + South Bid Phase 4/21

★ Elementary Design Kick-Off 4/21

North Hills + South Hills Middle School Award 6/21

Middle School North + South Groundbreaking 7/21

★ School Starts in New Configuration 9/23



# Construction Update

# CONSTRUCTION UPDATE

## Completed Tasks:

- ✓ Site Surveys Completed
- ✓ Soil Borings
- ✓ Underground Pipe Inspections
- ✓ Temporary Fencing
- ✓ Middle School North Asbestos Abatement Underway
- ✓ Lahser Selective Demolition
- ✓ Asset Auction

Lahser High  
School Site





# Closing Comments



END OF SECTION

# DISCUSSION