

Bloomfield's Blueprint

*Returning to teaching &
learning for the 2020-2021
school year*



January 28, 2021



Part One
COVID Update



Vaccines Shipped

Distribution Trend

Doses Administered

Doses by Vaccine

Doses Metrics

Enrolled Providers

Learn More

COVID Vaccine Distribution by Date and Facility Type

Dashboard updated: January 27, 2021. Date when the vaccine is shipped by the distributor, NOT the date of receipt by the provider. Includes first and second dose allotments. Doses are distributed to vaccine providers within the LHD jurisdiction.



Region 2N

Preparedness Region

All

Local Health Department Jurisdiction

All

Provider County

Oakland

Facility Type

All

Distribution Date Range

12/14/2020

1/26/2021

Data as of :

1/26/21

Facility Type

Moderna

Pfizer

Total

Federally Qualified Health Center

200

200

Hospital

14,300

109,200

123,500

Local Health Department

7,200

15,600

22,800

Total Doses

21,700

124,800

146,500

Vaccines Distributed by Date (units in K = Thousand)

Vaccine Type ● Moderna ● Pfizer

30K

20K

10K

0K

12/13/20

12/14/20

12/15/20

12/16/20

12/17/20

12/18/20

12/19/20

12/20/20

12/21/20

12/22/20

12/23/20

12/24/20

12/25/20

12/26/20

12/27/20

12/28/20

12/29/20

12/30/20

12/31/20

1/1/21

1/2/21

1/3/21

1/4/21

1/5/21

1/6/21

1/7/21

1/8/21

1/9/21

1/10/21

1/11/21

1/12/21

1/13/21

1/14/21

1/15/21

1/16/21

1/17/21

1/18/21

1/19/21

1/20/21

1/21/21

1/22/21

1/23/21

1/24/21

1/25/21

1/26/21



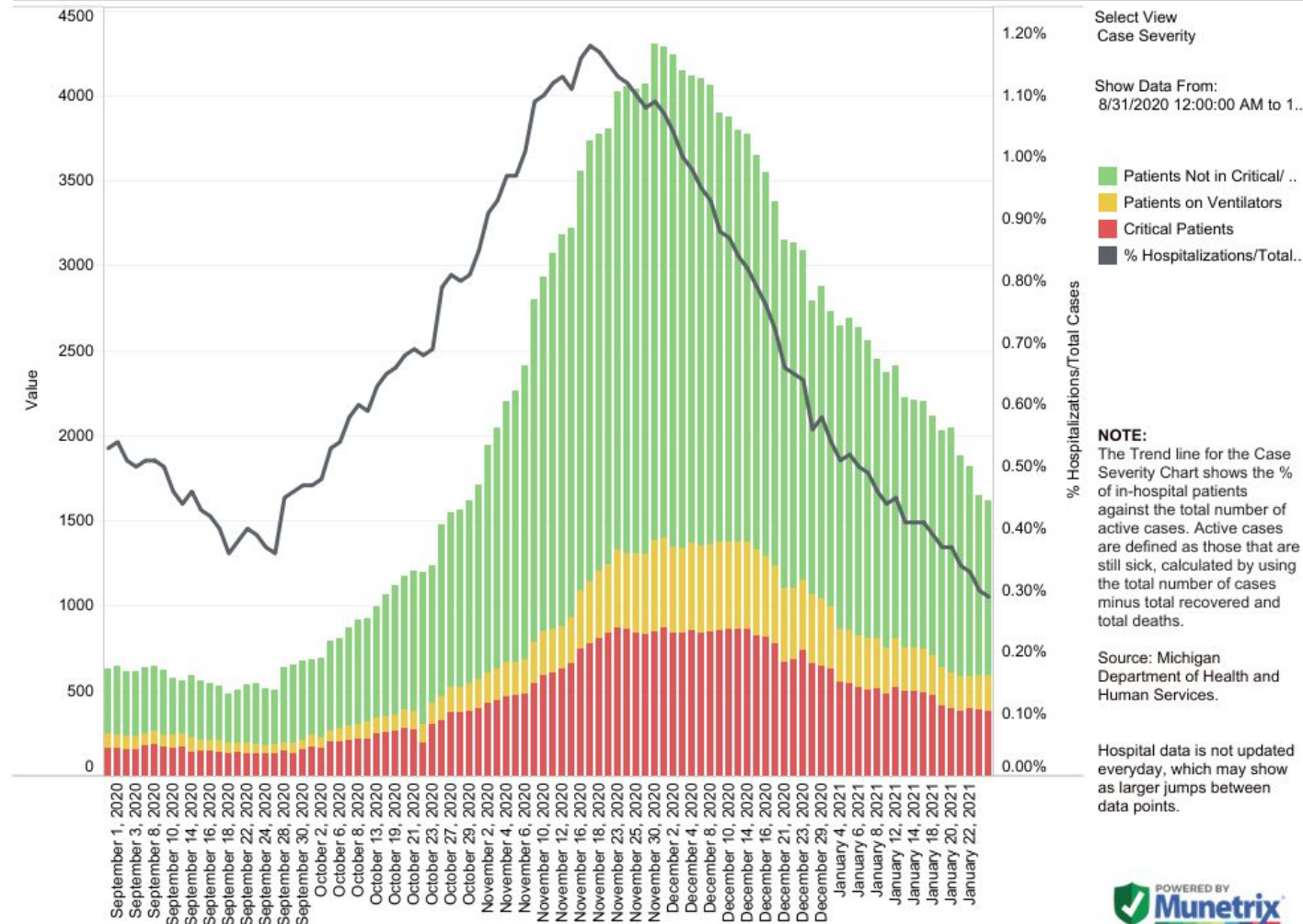
Reporting Period: January 13 - January 26

Reporting period: January 13 – January 26			
METRIC	RESULT	Trend	DEFINITION
Total “Confirmed and Probable” COVID-19 Cases Reported in Oakland County	2828	↓	“Confirmed”: laboratory-confirmed positive molecular viral test “Probable”: rapid-antigen positive viral test
Cases/Day per Million Population 7-Day Average 14-Day Average	168 137	↓	Average number of cases per day per million population over the given timeframe
14-Day Average Daily Case Counts	202	↓	The average number of cases per day reported over the last 14 days of the reporting period
14-Day Average Daily Death Counts	1.14	→	The average number of deaths per day reported over the last 14 days of the reporting period
14-Day Average Tests Per Day	3901	↓	The average number of diagnostic tests administered to Oakland residents over the last 14 days of the reporting period
Percentage of Cases Hospitalized in the Last 14 Days	1.91%	→	The percentage of cases (confirmed and probable) that reported being hospitalized over the last 14 days of the reporting period
Percent Positivity (7 days)	5.33%	↓	Percentage of reported positive tests over the last 7 days (January 20 – January 26)
Percent Positivity (28 days)	7.20%	↓	Percentage of reported positive tests over the last 28 days (December 20 – January 26)
Healthcare Capacity Strength	STABLE	→	Assessment of bed availability and hospital capacity
Testing, Tracing, Containment Infrastructure	STRONG	→	Assessment of testing availability and OCHD contact tracing capability

Total Oakland County Cases Reported by Age Group					
Age Group	Total Cases	Trend	Age Group	Total Cases	Trend
0-4	56	→	50-59	435	↓
5-9	68	↓	60-69	282	↓
10-13	101	→	70-79	175	↓
14-18	216	↓	80-89	79	↓
19-29	538	↓	90+	47	↓
30-39	413	↓	Unknown	0	
40-49	418	↓			

he number of reported cases decreased by about 645 cases. The average number of tests per day decreased about 500 tests per day. Percent positivity decreased a little more than half of a percent over the last 28 days and about 1.2% over the last 7 days. The percentage of cases hospitalized remained stable. Healthcare capacity remained stable.

State Hospitalization Trends - Case Severity

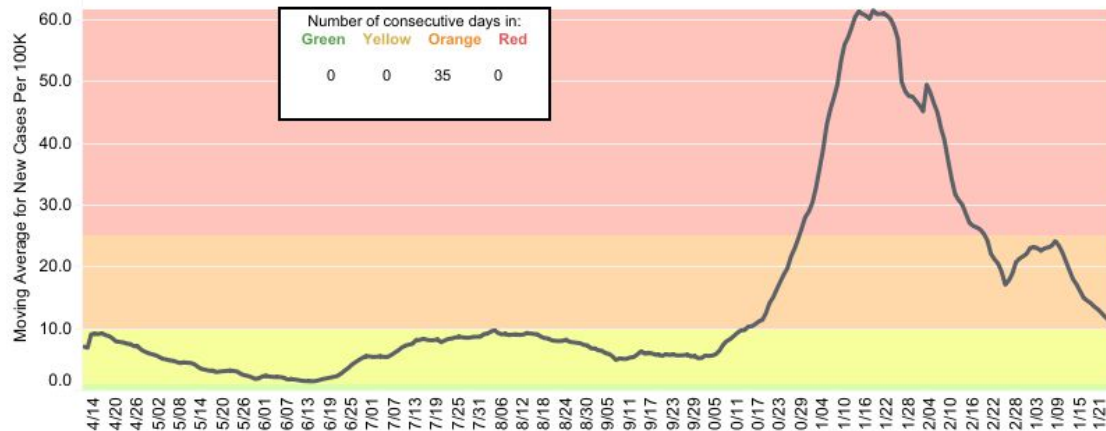


County Dashboard: Oakland County

Notes

New Cases per 100K Data

Data for 1/23/2021:
New Cases per 100K: 6.45
Percent Positive: 5.83%



County
Oakland County

Show Data From:
4/11/2020 to 1/23/2021
and Null values

■ New Cases Moving Avera..
■ Percent Positive Moving A..

Data Source: <https://www.michigan.gov/coronavirus>
Moving average is based on previous 7 days, with a lag time of 3-days for data accuracy.

Reference lines are shown for risk of outbreak levels:

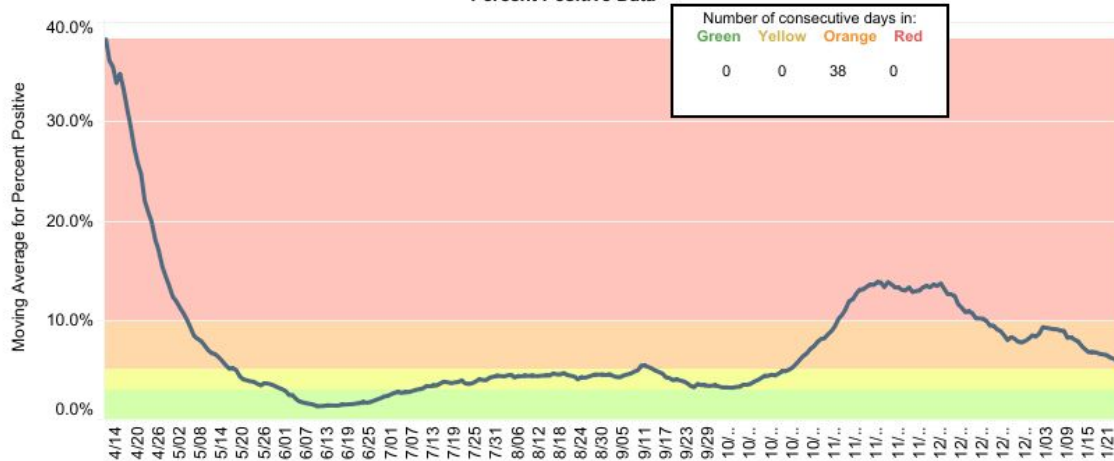
Red: >25 cases/100K
>10% positivity

Orange: 10-25 cases/100K
5-10% positivity

Yellow: 1-10 cases/100K
3-5% positivity

Green: <1 cases/100K
<3% positivity

Percent Positive Data

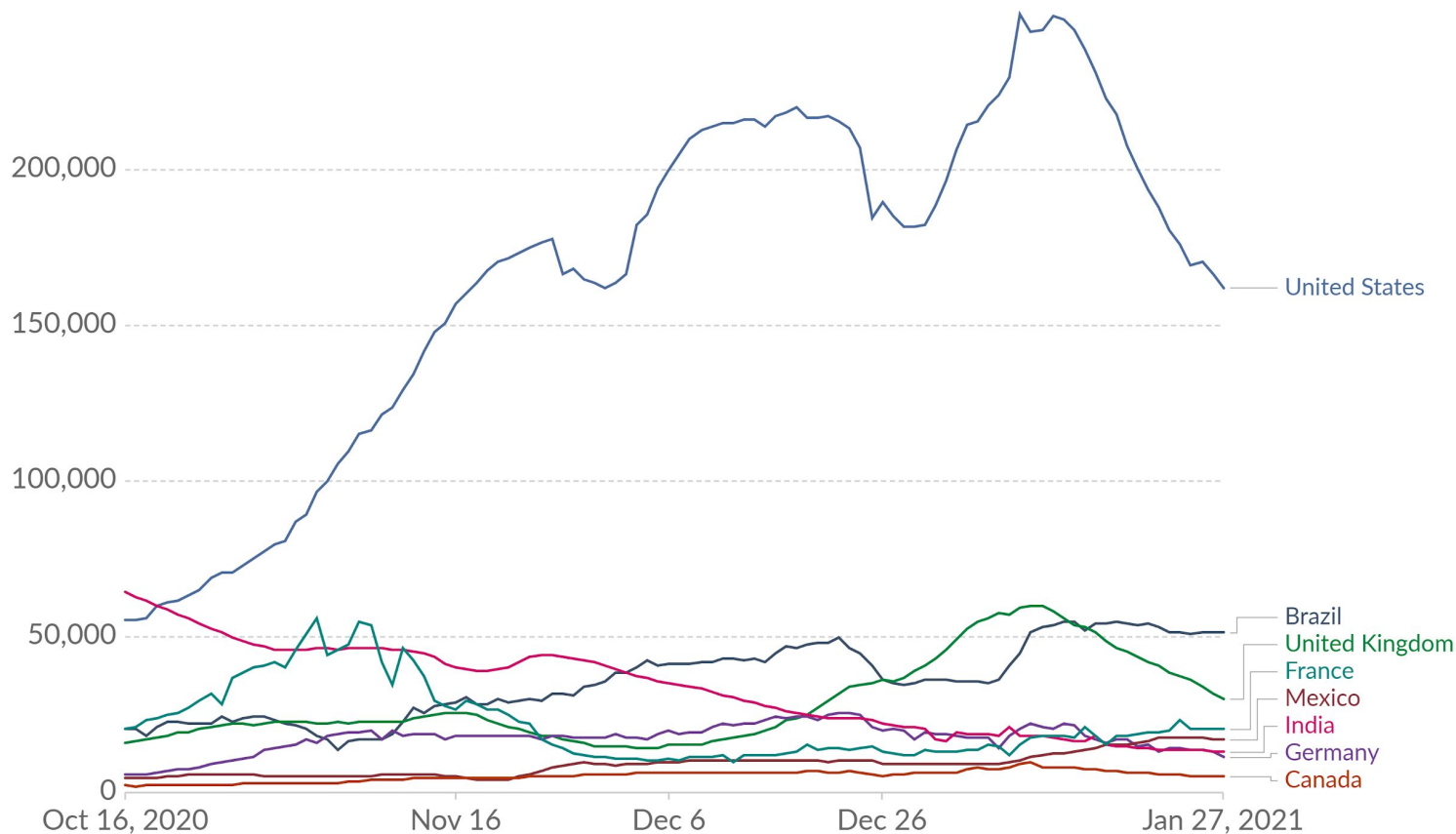


Developed in collaboration with
Bloomfield Hills School District and Munetrix



Daily new confirmed COVID-19 cases

Shown is the rolling 7-day average. The number of confirmed cases is lower than the number of actual cases; the main reason for that is limited testing.



Source: Johns Hopkins University CSSE COVID-19 Data - Last updated 28 January, 06:02 (London time)

CC BY

COVID-19 Summary for Oakland County



60,725

Total Cases¹

1,526

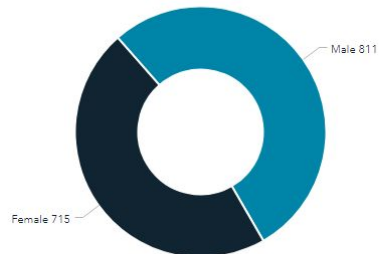
Total Deaths

52,631

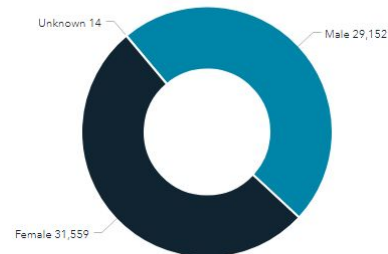
Total Recovered²

[Counts](#) [About](#)

Deaths by Gender



Cases by Gender



Counts by Day*

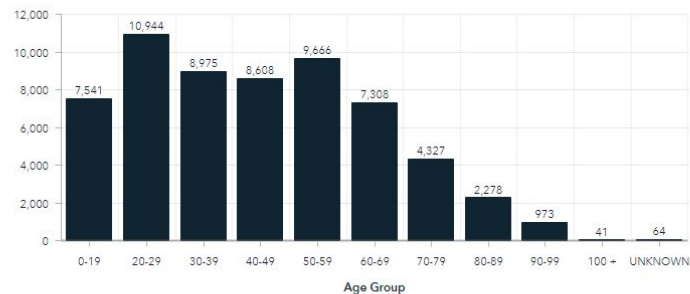
Date	Cases	Deaths
28-Jan	49	
27-Jan	149	
26-Jan	155	
25-Jan	188	
24-Jan	90	1
23-Jan	143	1
22-Jan	222	2
21-Jan	169	1
20-Jan	198	4

7 Day Average of Daily Cases



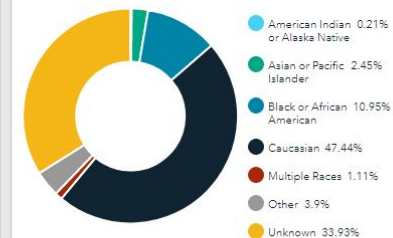
[7 Day Case Average](#) [7 Day Death Average](#) [Total Confirmed Cases](#)

Cases by Age Group



[Cases by Age Group](#) [Cases by Age & Gender](#) [Deaths by Age Group](#) [Deaths by Age & Gender](#)

Percentage of Cases by Race



[Cases by Race](#) [Deaths by Race](#)



END OF SECTION

DISCUSSION