

# Bloomfield's Blueprint

*Returning to teaching &  
learning for the 2020-2021  
school year*



*February 25, 2021*



*Part One*  
COVID Update



# COVID Vaccine Distribution

Dashboard updated: February 24, 2021. Date when the vaccine is shipped by the distributor, NOT the date of receipt by the provider. Includes first and second dose allotments. Doses are distributed to vaccine providers within the LHD jurisdiction.



Preparedness Region

All

Local Health Dept. Jurisdiction

All

Provider County

Oakland

Data as of :

2/22/21

Distribution Date Range

12/14/2020

2/24/2021

Facility Type

All

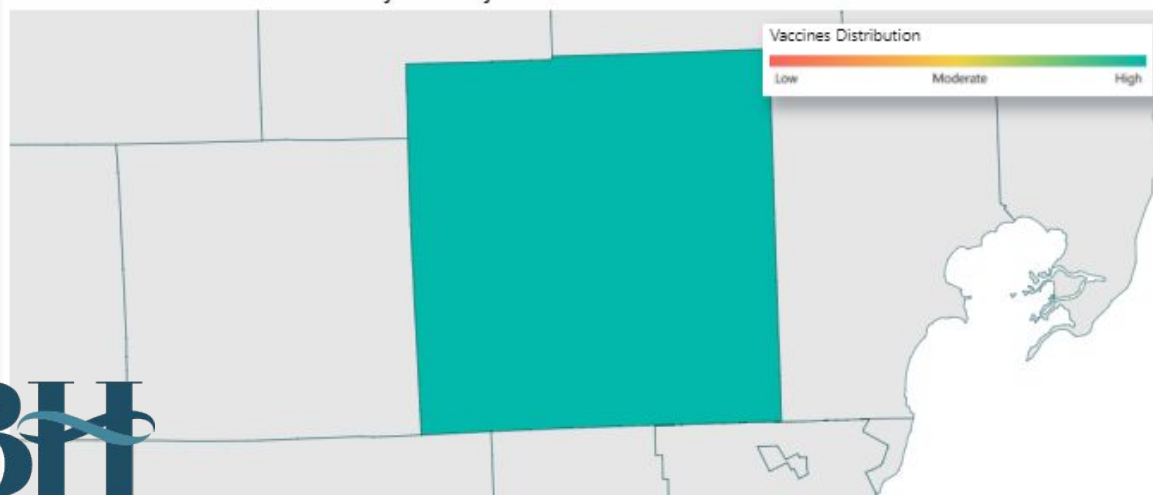
Year

All

Vaccine Type

All

## COVID Vaccine Distribution by County



## Region 2N

Total Vaccines Distributed\*

278,715

\*499,200 doses were transferred to the Federal Programs

Pfizer

206,115

Moderna

72,600

Vaccines Distributed in Preparedness Region (units in K = Thousand)

Vaccine Type ● Moderna ● Pfizer

0.2M

0.1M

0.0M



Region 2N

# Weekly COVID-19 Report



## Oakland County Schools

Reporting period: February 3 – February 16			
METRIC	RESULT	Trend	DEFINITION
Total “Confirmed and Probable” COVID-19 Cases Reported in Oakland County	1595	↑	“Confirmed”: laboratory-confirmed positive molecular viral test “Probable”: rapid-antigen positive viral test
Cases/Day per Million Population 7-Day Average 14-Day Average	83 95	↑	Average number of cases per day per million population over the given timeframe
14-Day Average Daily Case Counts	114	↑	The average number of cases per day reported over the last 14 days of the reporting period
14-Day Average Daily Death Counts	1.4	→	The average number of deaths per day reported over the last 14 days of the reporting period
14-Day Average Tests Per Day	2933	↓	The average number of diagnostic tests administered to Oakland residents over the last 14 days of the reporting period
Percentage of Cases Hospitalized in the Last 14 Days	1.63%	→	The percentage of cases (confirmed and probable) that reported being hospitalized over the last 14 days of the reporting period
Percent Positivity (7 days)	3.51%	↓	Percentage of reported positive tests over the last 7 days (February 16 – February 22)
Percent Positivity (28 days)	3.72%	↓	Percentage of reported positive tests over the last 28 days (January 26 – February 22)
Healthcare Capacity Strength	STABLE	→	Assessment of bed availability and hospital capacity
Testing, Tracing, Containment Infrastructure	STRONG	→	Assessment of testing availability and OCHD contact tracing capability

## Reporting Period: February 3 - February 16

Total Oakland County Cases Reported by Age Group					
Age Group	Total Cases	Trend	Age Group	Total Cases	Trend
0-4	16	↓	50-59	246	↑
5-9	40	↑	60-69	134	→
10-13	57	↑	70-79	59	→
14-18	179	↑	80-89	36	↑
19-29	332	↑	90+	13	→
30-39	270	↑	Unknown	0	
40-49	213	↑			

The number of reported cases increased by about 222 cases. The average number of tests per day decreased just over 200 tests per day. Percent positivity decreased about 0.5% over the last 28 days and about 0.6% over the last 7 days. The number of deaths reported during this was stable. The percentage of cases hospitalized remained stable. Healthcare capacity remained stable.





**63,622**  
Total Cases<sup>1</sup>

**1,572**  
Total Deaths

**59,276**  
Total Recovered<sup>2</sup>

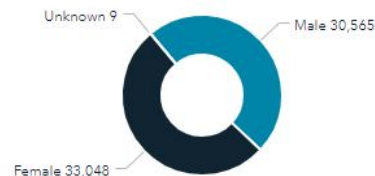
Counts

About

## Deaths by Gender



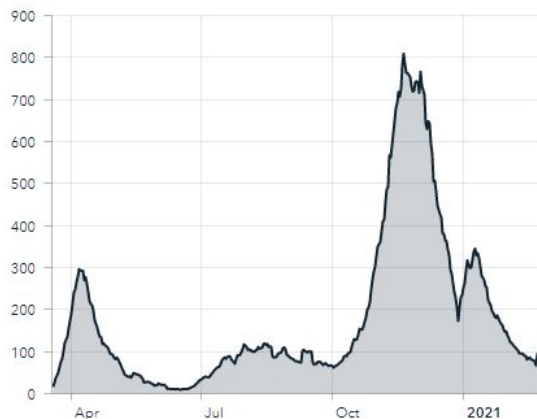
## Cases by Gender



## Counts by Day\*

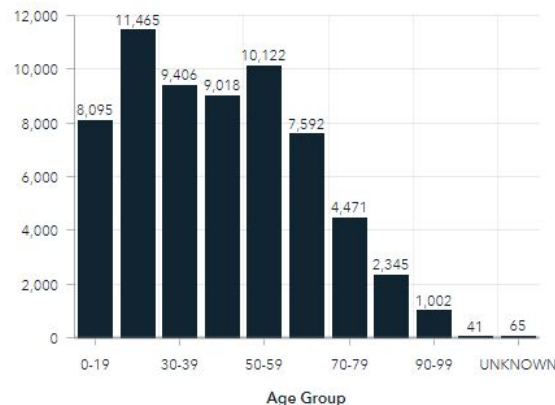
Date	Cases	Deaths
25-Feb	66	
24-Feb	134	
23-Feb	97	
22-Feb	227	
21-Feb	20	
20-Feb	14	
19-Feb	102	
18-Feb	109	
17-Feb	85	
16-Feb	101	

## 7 Day Average of Daily Cases



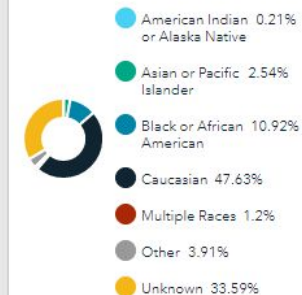
7 Day Case Average

## Cases by Age Group



Cases by Age Group

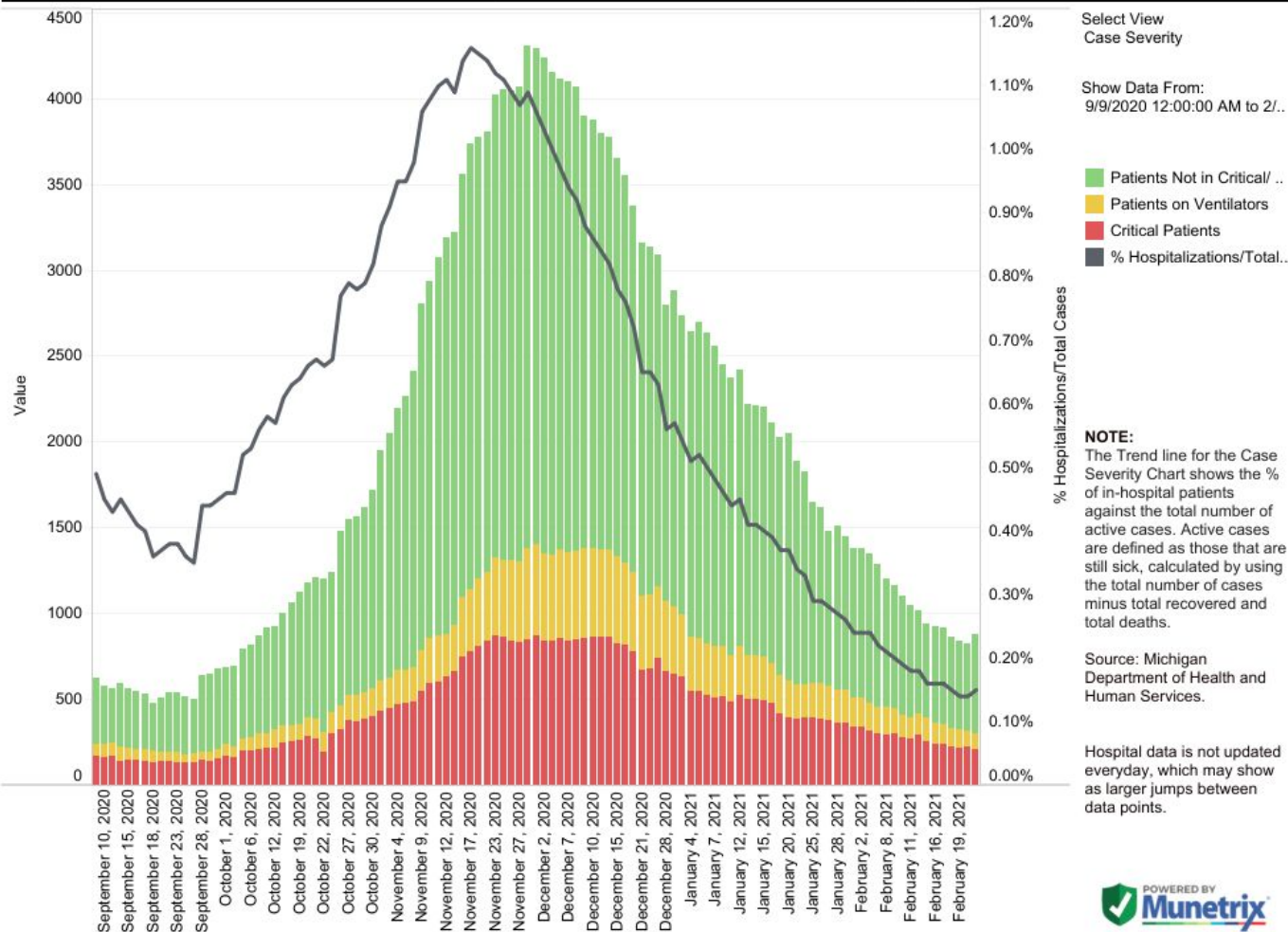
## Percentage of Cases by Race



Cases by Race

Deaths by Race

## State Hospitalization Trends - Case Severity

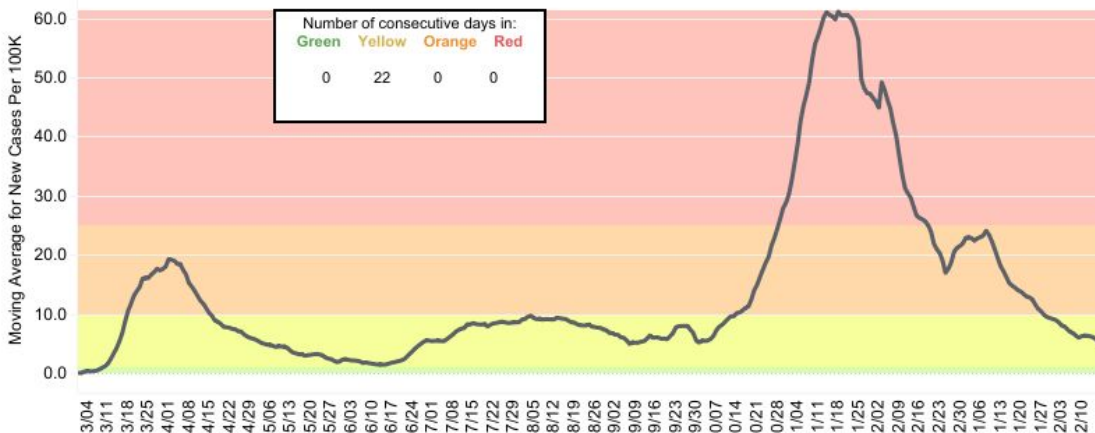




# County Dashboard: Oakland County

Notes

## New Cases per 100K Data



**Data for 2/18/2021:**  
 New Cases per 100K: **5.09**  
 Percent Positive: **3.65%**

County  
 Oakland County

Show Data From:  
 3/1/2020 to 2/18/2021  
 and Null values

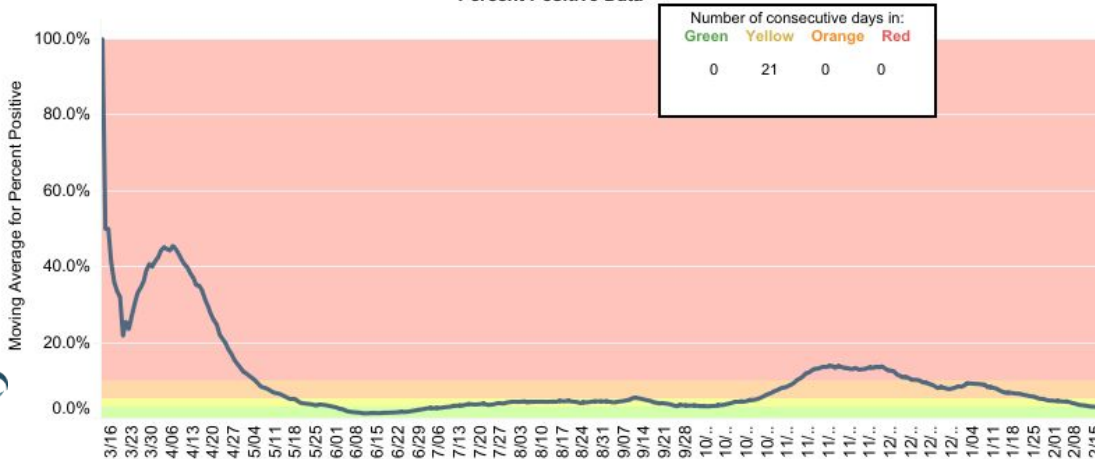
■ New Cases Moving Avera..  
 ■ Percent Positive Moving A..

Data Source: <https://www.michigan.gov/coronavirus>  
 Moving average is based on previous 7 days, with a lag time of 3-days for data accuracy.

Reference lines are shown for risk of outbreak levels:

**Red:** >25 cases/100K  
 >10% positivity  
**Orange:** 10-25 cases/100K  
 5-10% positivity  
**Yellow:** 1-10 cases/100K  
 3-5% positivity  
**Green:** <1 cases/100K  
 <3% positivity

## Percent Positive Data

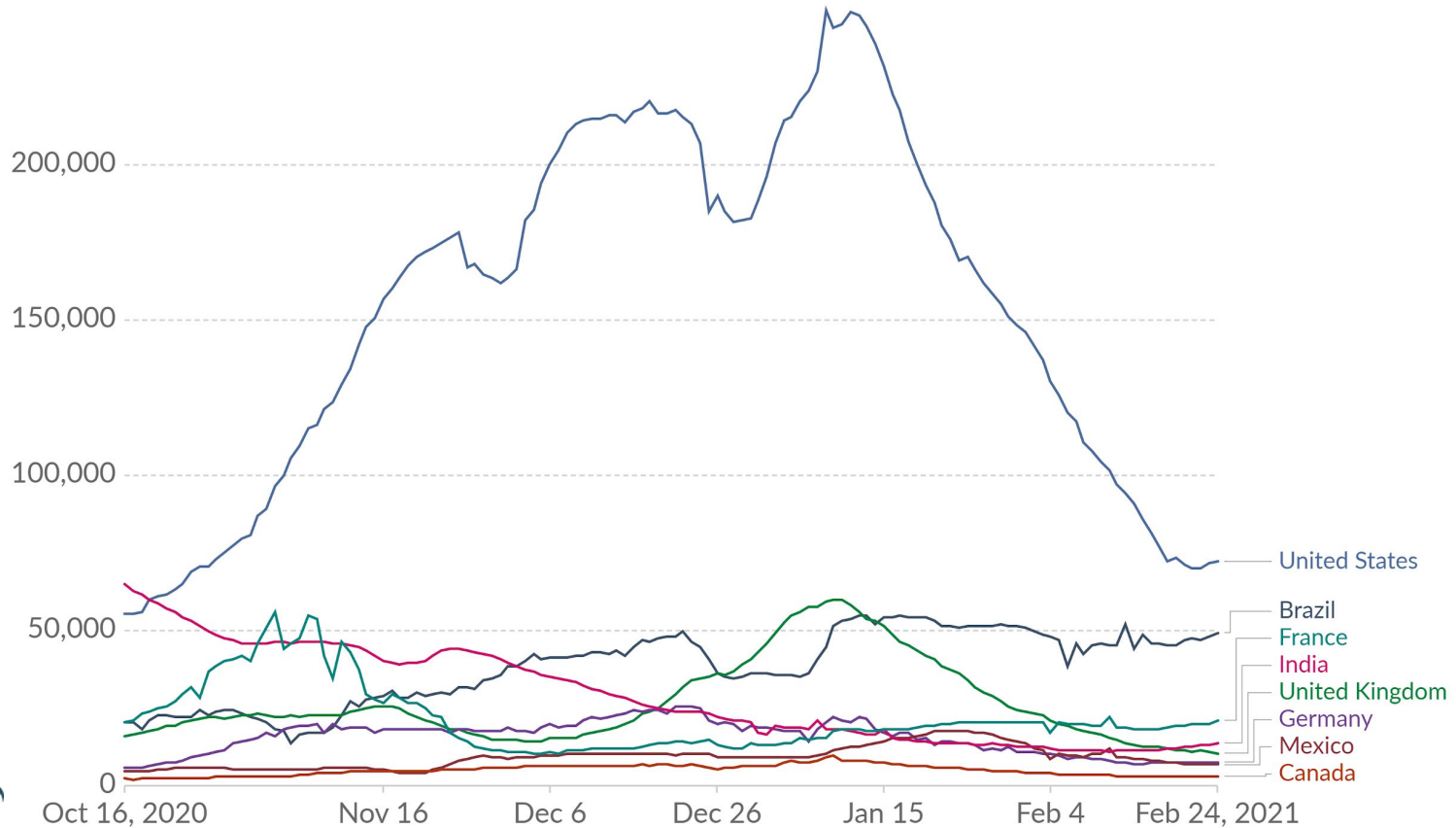


**Mx** Developed in collaboration with  
 Bloomfield Hills School District and Munetrix



# Daily new confirmed COVID-19 cases

Shown is the rolling 7-day average. The number of confirmed cases is lower than the number of actual cases; the main reason for that is limited testing.



Source: Johns Hopkins University CSSE COVID-19 Data - Last updated 25 February, 19:00 (London time)

CC BY





END OF SECTION

# DISCUSSION