

# Bloomfield's Blueprint

*Returning to teaching &  
learning for the 2020-2021  
school year*



*March 11, 2021*



*Part One*  
COVID Update



# COVID Vaccine Distribution

Dashboard updated: March 10, 2021. Date when the vaccine is shipped by the distributor, NOT the date of receipt by the provider. Includes first and second dose allotments. Doses are distributed to vaccine providers within the LHD jurisdiction.



Preparedness Region

All

Local Health Dept. Jurisdiction

All

Provider County

Oakland

Data as of :

3/9/21

Distribution Date Range

12/14/2020

3/10/2021

Facility Type

All

Vaccine Type

All

## COVID Vaccine Distribution by County



## Region 2N

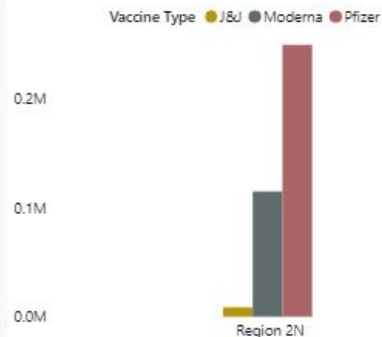
Total Vaccines Distributed\*

372,805

\*420,660 doses were transferred to Federal Programs

Pfizer	249,405
Moderna	114,800
J&J	8,600

## Doses Distributed by Preparedness Region (M = Million)



Microsoft Power BI

< 1 of 10 >



# Weekly COVID-19 Report



## Oakland County Schools

Reporting period: February 24 – March 9			
METRIC	RESULT	Trend	DEFINITION
Total “Confirmed and Probable” COVID-19 Cases Reported in Oakland County	2057	↑	“Confirmed”: laboratory-confirmed positive molecular viral test “Probable”: rapid-antigen positive viral test
Cases/Day per Million Population 7-Day Average 14-Day Average	133 122	↑	Average number of cases per day per million population over the given timeframe
14-Day Average Daily Case Counts	147	↑	The average number of cases per day reported over the last 14 days of the reporting period
14-Day Average Daily Death Counts	.35	→	The average number of deaths per day reported over the last 14 days of the reporting period
14-Day Average Tests Per Day	3278	↑	The average number of diagnostic tests administered to Oakland residents over the last 14 days of the reporting period
Percentage of Cases Hospitalized in the Last 14 Days	1.02%	↓	The percentage of cases (confirmed and probable) that reported being hospitalized over the last 14 days of the reporting period
Percent Positivity (7 days)	4.11%	↑	Percentage of reported positive tests over the last 7 days (March 3 – March 9)
Percent Positivity (28 days)	3.45%	↑	Percentage of reported positive tests over the last 28 days (February 9 – March 9)
Healthcare Capacity Strength	STABLE	→	Assessment of bed availability and hospital capacity
Testing, Tracing, Containment Infrastructure	STRONG	→	Assessment of testing availability and OCHD contact tracing capability

## Reporting Period: February 24 - March 9

Total Oakland County Cases Reported by Age Group					
Age Group	Total Cases	Trend	Age Group	Total Cases	Trend
0-4	26	↑	50-59	324	↑
5-9	47	↑	60-69	182	↑
10-13	124	↑	70-79	68	↑
14-18	234	↑	80-89	43	↑
19-29	398	↑	90+	6	↑
30-39	287	↑	Unknown	1	↑
40-49	317	↑			

The number of reported cases increased by about 380 cases. The average number of tests per day increased to 164 tests per day. Percent positivity increased about 0.12% over the last 28 days and about 0.78% over the last 7 days. The number of deaths reported during this was stable. The percentage of cases hospitalized remained stable. Healthcare capacity remained stable.



**65,307**  
Total Cases<sup>1</sup>

**1,600**  
Total Deaths

**60,676**  
Total Recovered<sup>2</sup>

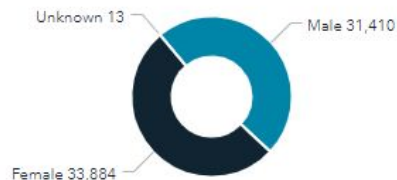
Counts

About

## Deaths by Gender



## Cases by Gender



## Counts by Day\*

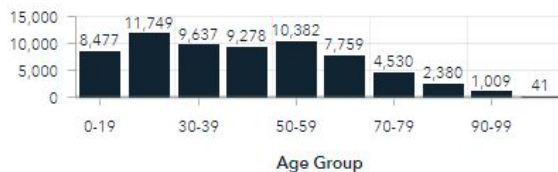
Date	Cases	Deaths
10-Mar	103	
09-Mar	142	
08-Mar	175	
07-Mar	105	
06-Mar	111	
05-Mar	151	
04-Mar	149	1
03-Mar	154	
02-Mar	116	
01-Mar	147	1

## 7 Day Average of Daily Cases



7 Day Case Average

## Cases by Age Group



Cases by Age Group

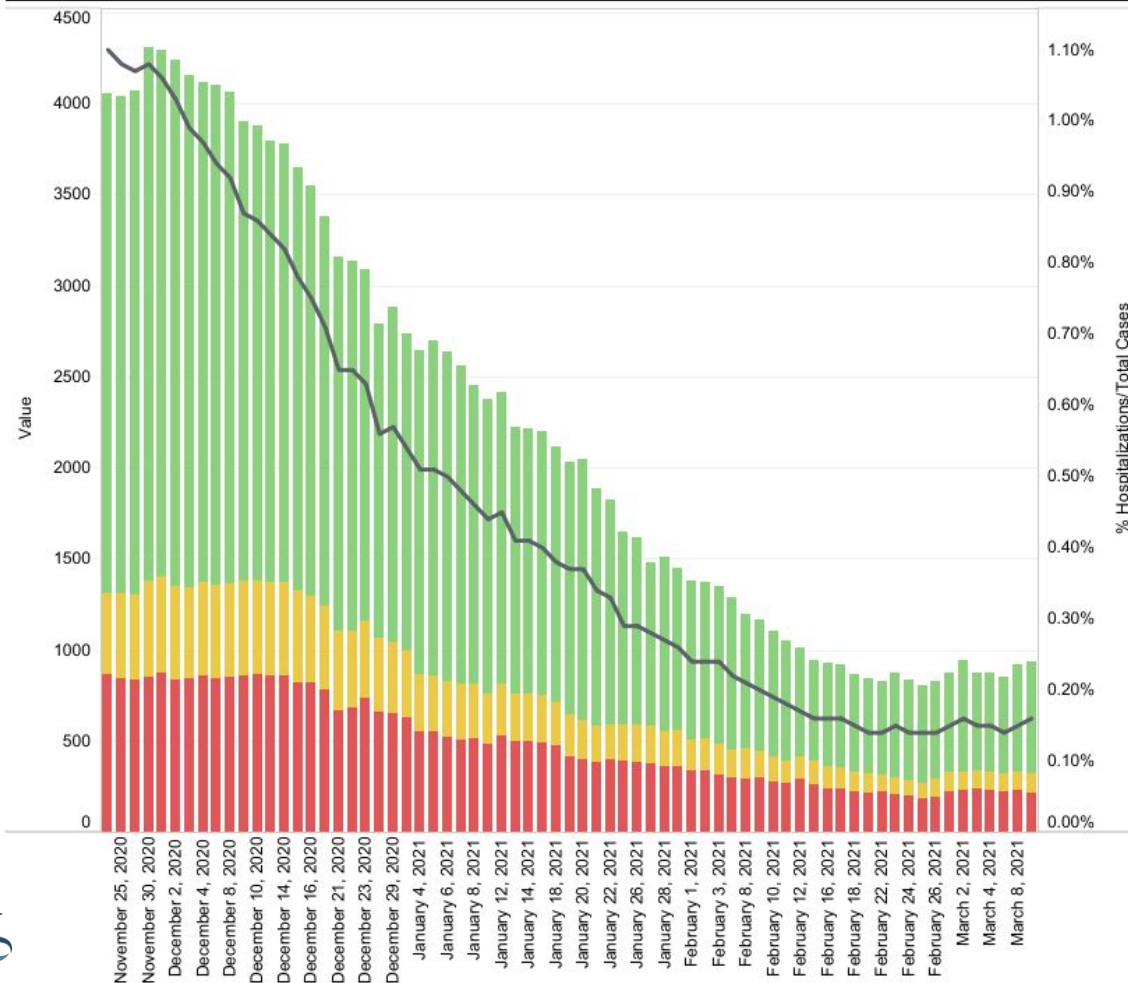
## Percentage of Cases by Race



Cases by Race

Deaths by Race

# State Hospitalization Trends - Case Severity



Select View  
Case Severity

Show Data From:  
11/24/2020 12:00:00 AM to ..

- Patients Not in Critical/ ..
- Patients on Ventilators
- Critical Patients
- % Hospitalizations/Total..

## NOTE:

The Trend line for the Case Severity Chart shows the % of in-hospital patients against the total number of active cases. Active cases are defined as those that are still sick, calculated by using the total number of cases minus total recovered and total deaths.

Source: Michigan Department of Health and Human Services.

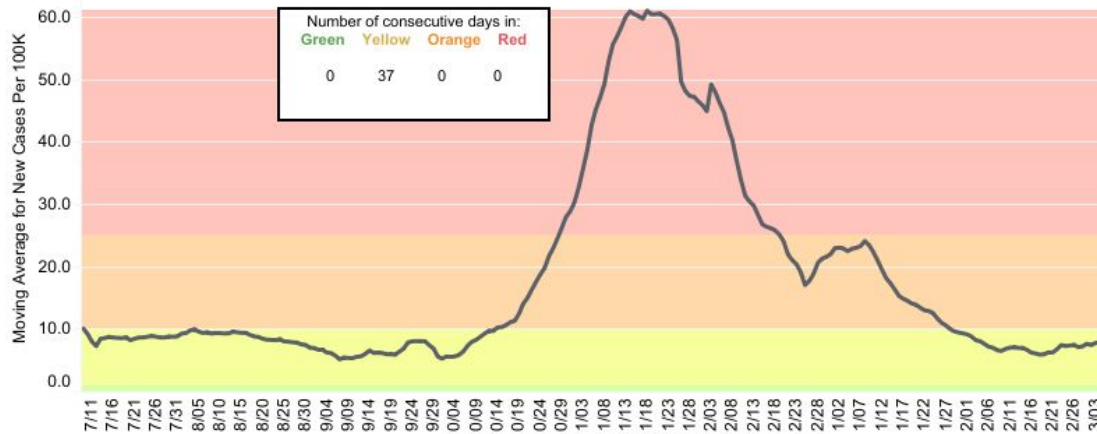
Hospital data is not updated everyday, which may show as larger jumps between data points.



# County Dashboard: Oakland County

Notes

## New Cases per 100K Data



**Data for 3/6/2021:**  
New Cases per 100K: **8.20**  
Percent Positive: **4.35%**

County  
Oakland County

Show Data From:  
7/9/2020 to 3/6/2021  
and Null values

■ New Cases Moving Avera..  
■ Percent Positive Moving A..

Data Source: <https://www.michigan.gov/coronavirus>  
Moving average is based on previous 7 days, with a lag time of 3-days for data accuracy.

Reference lines are shown for risk of outbreak levels:

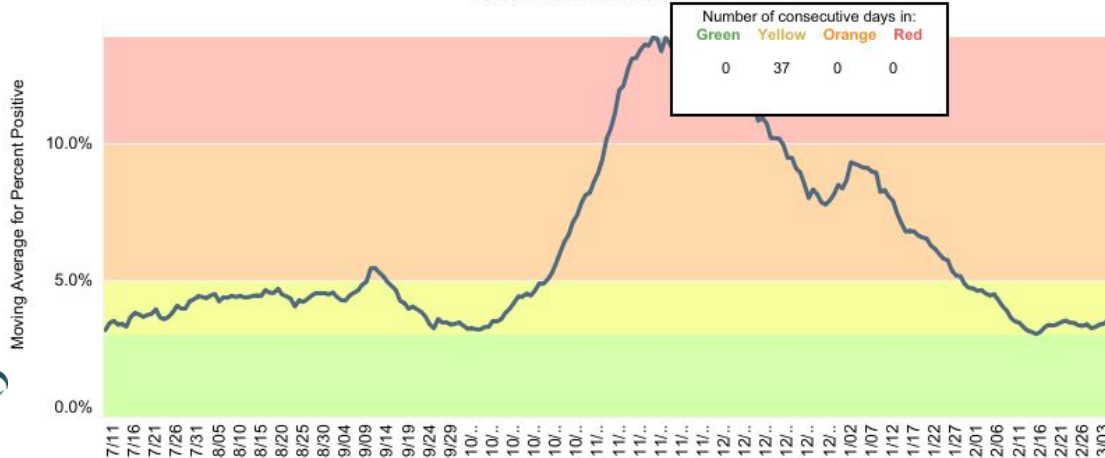
**Red:** >25 cases/100K  
>10% positivity

**Orange:** 10-25 cases/100K  
5-10% positivity

**Yellow:** 1-10 cases/100K  
3-5% positivity

**Green:** <1 cases/100K  
<3% positivity

## Percent Positive Data



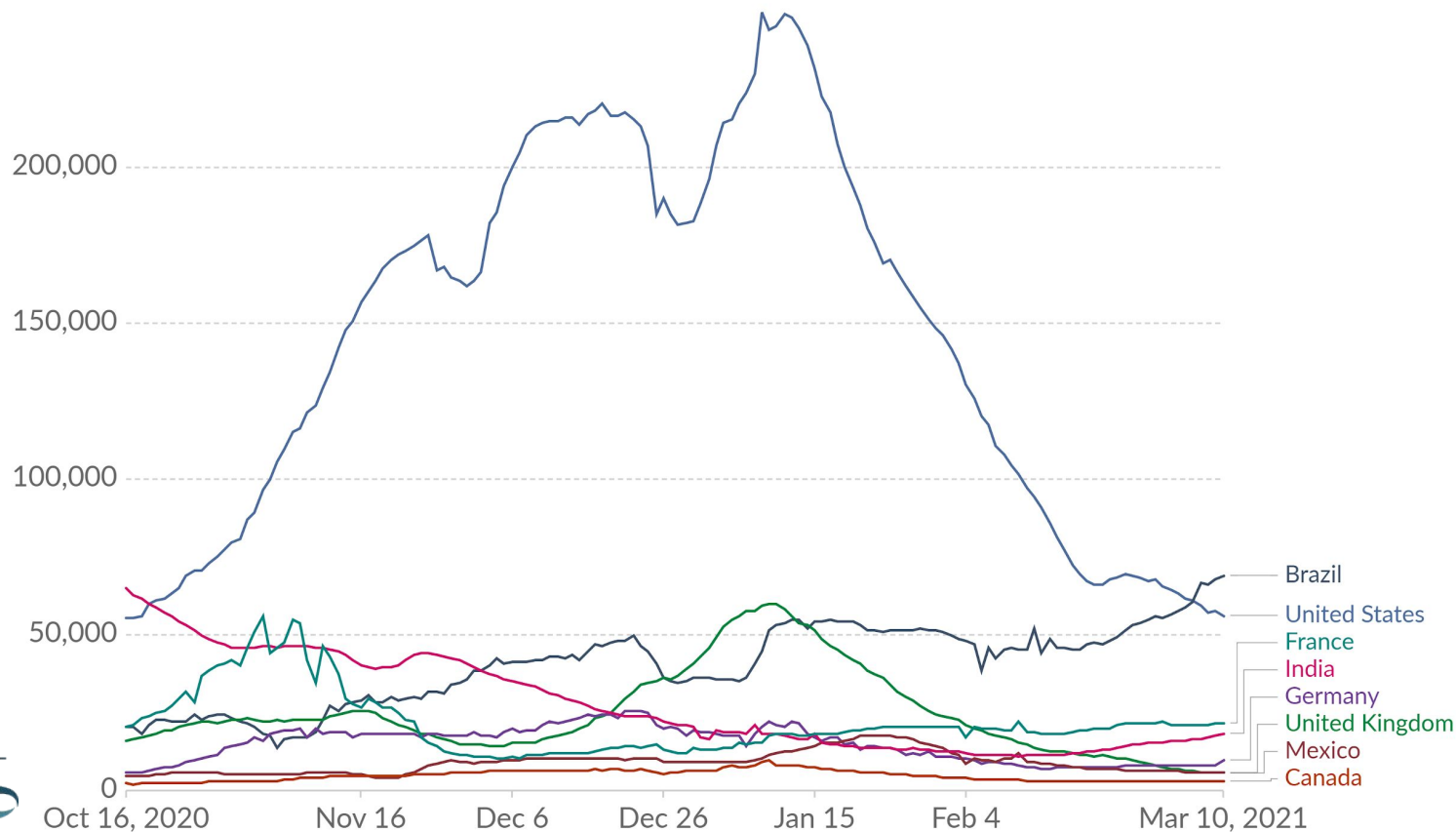
Developed in collaboration with  
Bloomfield Hills School District and Munetrix



# Daily new confirmed COVID-19 cases

Shown is the rolling 7-day average. The number of confirmed cases is lower than the number of actual cases; the main reason for that is limited testing.

Our World  
in Data



Source: Johns Hopkins University CSSE COVID-19 Data - Last updated 11 March, 11:03 (London time)

CC BY





END OF SECTION

# DISCUSSION

*Part Two*  
Staffing Update



# Staffing Update



## Leave of Absence Provisions:

- 229 recovered / returned
- 0\* staff on EPSLA
- 2 currently quarantined
- 24 active FMLA
- 2 Workers Comp Disability

*\*EPSLA sunset on 12/31/20. The district extended it to 1/29/21. So now any of those are absorbed in the regular FMLA numbers.*

Support Staff	Paras	Preschool/ Latch Key	Drivers
2019 Resignations	-12	-10	-13
2019 New Hires	+9	+9	+13
2020 Resignations	-18	-34	-13
2020 New Hires	+13	+4	+6
Cumulative Difference	-8	-31	-7

# *Staffing* - Current Open Positions

Secondary Math  
Teacher

Director of  
Physical Plant  
Services

3 Latchkey/Kidz  
Zone teachers, 1  
supervisor

10 bus drivers

10 paraeducators  
district-wide

4 part time food  
service positions

School Social  
Worker

2 Instructional  
Assistants at Wing  
Lake





END OF SECTION

# DISCUSSION

# *Part Three*

Fall 2021 Update





Continuing in the fall of 2021, ***All students*** in Bloomfield Hills Schools can attend school, for a full school day, 5 days per week, ***beginning the first day of school on September 8, 2021.***





## **IS VIRTUAL LEARNING RIGHT FOR MY CHILD?**

- K-8 Students and families will need to make a full-year commitment.
- Students need a home learning coach to support their academics, time management, and social-emotional wellness.
- Expectations mirror in-person teaching and learning expectations.
- BHS teachers create lessons and activities that engage students in the virtual school environment utilizing innovative practices.
- Bloomfield Hills Schools provides a device (iPad for kindergarten) to every student upon enrollment and completion of the Technology Agreement.
- Students enrolled in Bloomfield Virtual may participate in extracurricular activities that happen outside of the classroom day including sports, clubs, and student organizations.
- As students begin to register for classes for next year, the students will indicate if they are interested in a virtual option. This virtual option may be synchronous or asynchronous teaching. It will be a stand alone class and will be entirely a virtual class.



# BHHS *Virtual* Learning Community

BHHS will be offering a pilot program of select BHHS classes in a virtual learning environment for the 2021-22 school year.

- Courses will be taught by BHHS teachers and incorporate dynamic virtual learning engagements
- Students may select BHHS Virtual Courses as a first or second hour course to create a late start to their day
- BHHS Virtual Courses offer more independent learning opportunities with minimal specific on-screen check-ins
- BHHS Virtual Courses can be a single block and up to 8 depending on the student course selection. BHHS Virtual options will be augmented by other virtual providers for a full schedule if required
- Not all courses will be available for BHHS Virtual nor will the concurrent model of virtual/in-person be offered. Classes will either be all in-person or all virtual.
- BHHS virtual classes will match the rigor of in-person BHHS courses and meet all graduation requirements
- Students are indicating their interest in a BHHS Virtual Course with the current course registration process.



END OF SECTION

# DISCUSSION

# *Part Four*

## Therapy Dog Pilot Program



# What does the *research* say?

**Physical** – interaction with a furry friend reduces blood pressure, provides tactile stimulation, assists with pain management, gives motivation to move, walk and stimulates the senses

**Social** – a visit with a dog provides a positive mutual topic for discussion, promotes greater self-esteem and well-being, and focused interaction with others

**Cognitive** – companionship with a dog stimulates memory, problem solving and game playing

**Emotional** – an adorable four-legged visitor improves self-esteem, acceptance from others, and lifts mood often provoking laughter

**Environmental** – a dog in a facility decreases the feeling of a sterile environment, lifts mood and this continues after visit

(Data adapted from the Australian Companion Animal Council)





What will this cost?

*Nothing*

## Several Local School Districts with *Established Programs*

- Brighton
- Walled Lake
- Troy
- Rochester
- Clarkston

Districts with developing programs

- Novi



# ***What*** does the dog's day look like?



*Declan is a Therapy  
Dog in Brighton  
schools*

- A schedule is created for the entire month
- One hour every day in the media center for reading
- One hour every day in PE for exercise
- One hour of prep :)
- Rest of the time with classes
- The therapy dog does not work for treats and will not be in the cafeteria.



END OF SECTION

# DISCUSSION