

# Bloomfield's Blueprint

*Returning to teaching &  
learning for the 2020-2021  
school year*



*March 11, 2021*



*Part One*  
COVID Update



# COVID Vaccine Distribution

Dashboard updated: March 10, 2021. Date when the vaccine is shipped by the distributor, NOT the date of receipt by the provider. Includes first and second dose allotments. Doses are distributed to vaccine providers within the LHD jurisdiction.



Preparedness Region

All

Local Health Dept. Jurisdiction

All

Provider County

Oakland

Data as of :

3/9/21

Distribution Date Range

12/14/2020

3/10/2021

Facility Type

All

Vaccine Type

All

## COVID Vaccine Distribution by County



## Region 2N

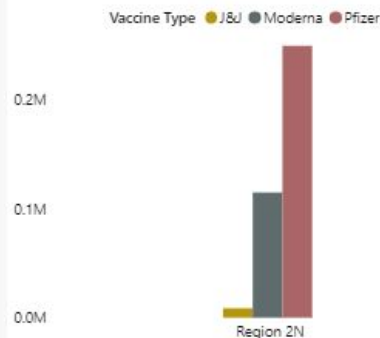
Total Vaccines Distributed\*

372,805

\*420,660 doses were transferred to Federal Programs

Pfizer	249,405
Moderna	114,800
J&J	8,600

## Doses Distributed by Preparedness Region (M = Million)



Microsoft Power BI

< 1 of 10 >



# Weekly COVID-19 Report



## Oakland County Schools

Reporting period: February 24 – March 9			
METRIC	RESULT	Trend	DEFINITION
Total “Confirmed and Probable” COVID-19 Cases Reported in Oakland County	2057	↑	“Confirmed”: laboratory-confirmed positive molecular viral test “Probable”: rapid-antigen positive viral test
Cases/Day per Million Population 7-Day Average 14-Day Average	133 122	↑	Average number of cases per day per million population over the given timeframe
14-Day Average Daily Case Counts	147	↑	The average number of cases per day reported over the last 14 days of the reporting period
14-Day Average Daily Death Counts	.35	→	The average number of deaths per day reported over the last 14 days of the reporting period
14-Day Average Tests Per Day	3278	↑	The average number of diagnostic tests administered to Oakland residents over the last 14 days of the reporting period
Percentage of Cases Hospitalized in the Last 14 Days	1.02%	↓	The percentage of cases (confirmed and probable) that reported being hospitalized over the last 14 days of the reporting period
Percent Positivity (7 days)	4.11%	↑	Percentage of reported positive tests over the last 7 days (March 3 – March 9)
Percent Positivity (28 days)	3.45%	↑	Percentage of reported positive tests over the last 28 days (February 9 – March 9)
Healthcare Capacity Strength	STABLE	→	Assessment of bed availability and hospital capacity
Testing, Tracing, Containment Infrastructure	STRONG	→	Assessment of testing availability and OCHD contact tracing capability

## Reporting Period: February 24 - March 9

Total Oakland County Cases Reported by Age Group					
Age Group	Total Cases	Trend	Age Group	Total Cases	Trend
0-4	26	↑	50-59	324	↑
5-9	47	↑	60-69	182	↑
10-13	124	↑	70-79	68	↑
14-18	234	↑	80-89	43	↑
19-29	398	↑	90+	6	↑
30-39	287	↑	Unknown	1	↑
40-49	317	↑			

The number of reported cases increased by about 380 cases. The average number of tests per day increased to 164 tests per day. Percent positivity increased about 0.12% over the last 28 days and about 0.78% over the last 7 days. The number of deaths reported during this was stable. The percentage of cases hospitalized remained stable. Healthcare capacity remained stable.





# COVID-19 Summary for Oakland County



**65,307**  
Total Cases<sup>1</sup>

**1,600**  
Total Deaths

**60,676**  
Total Recovered<sup>2</sup>

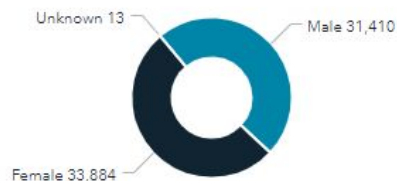
Counts

About

## Deaths by Gender



## Cases by Gender



## Counts by Day\*

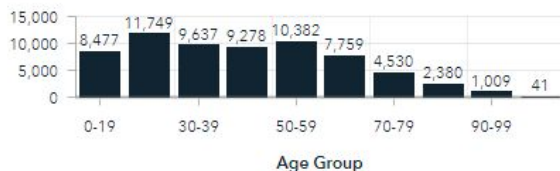
Date	Cases	Deaths
10-Mar	103	
09-Mar	142	
08-Mar	175	
07-Mar	105	
06-Mar	111	
05-Mar	151	
04-Mar	149	1
03-Mar	154	
02-Mar	116	
01-Mar	147	1

## 7 Day Average of Daily Cases



7 Day Case Average

## Cases by Age Group



Age Group

Cases by Age Group

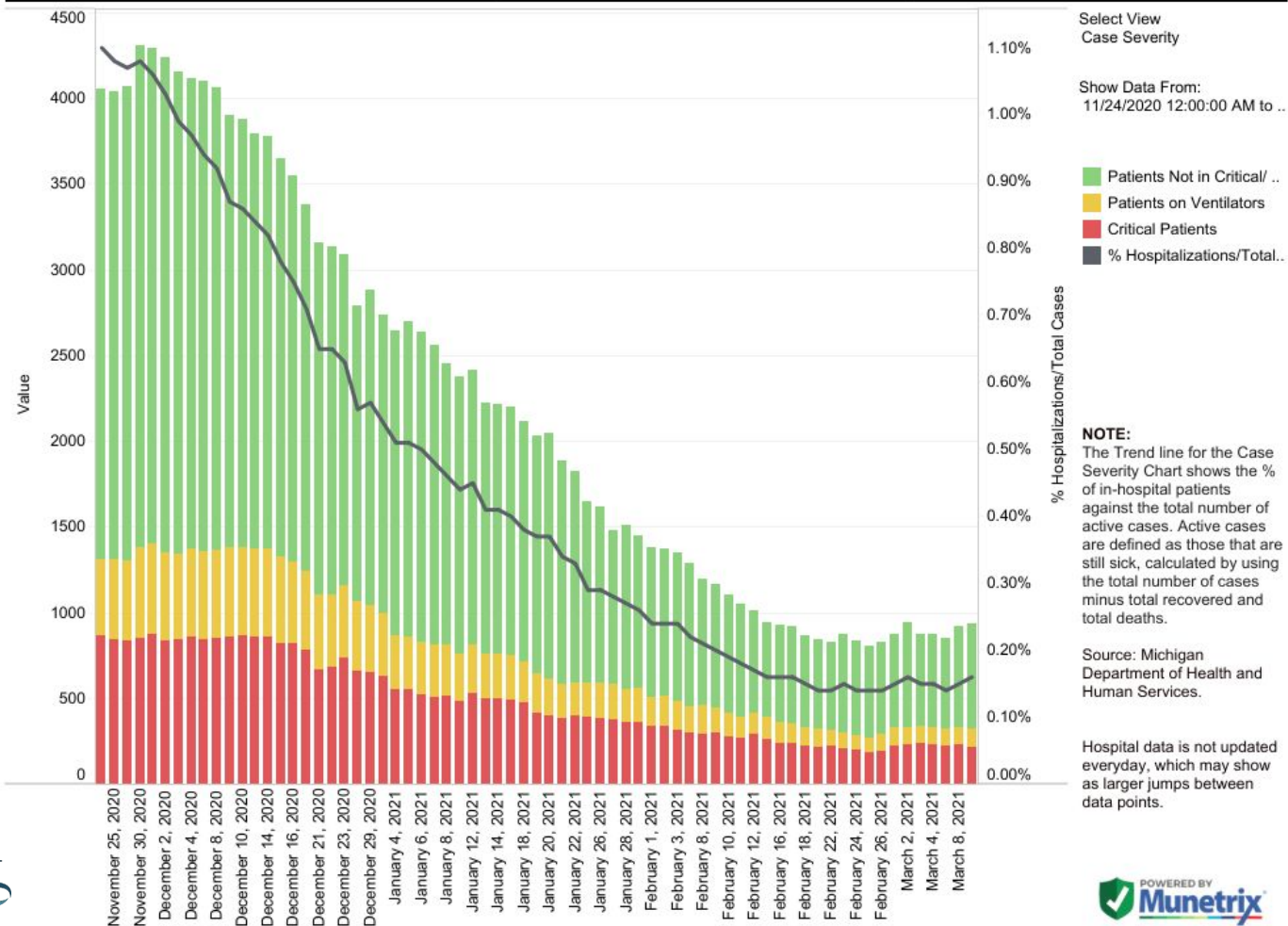
## Percentage of Cases by Race



Cases by Race

Deaths by Race

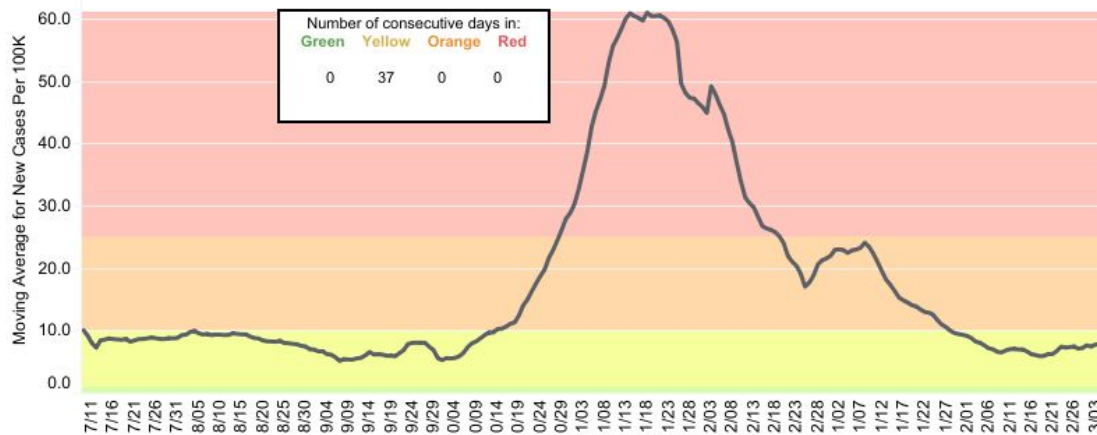
# State Hospitalization Trends - Case Severity



# County Dashboard: Oakland County

Notes

## New Cases per 100K Data



**Data for 3/6/2021:**  
New Cases per 100K: **8.20**  
Percent Positive: **4.35%**

County  
Oakland County

Show Data From:  
7/9/2020 to 3/6/2021  
and Null values

■ New Cases Moving Avera..  
■ Percent Positive Moving A..

Data Source: <https://www.michigan.gov/coronavirus>  
Moving average is based on previous 7 days, with a lag time of 3-days for data accuracy.

Reference lines are shown for risk of outbreak levels:

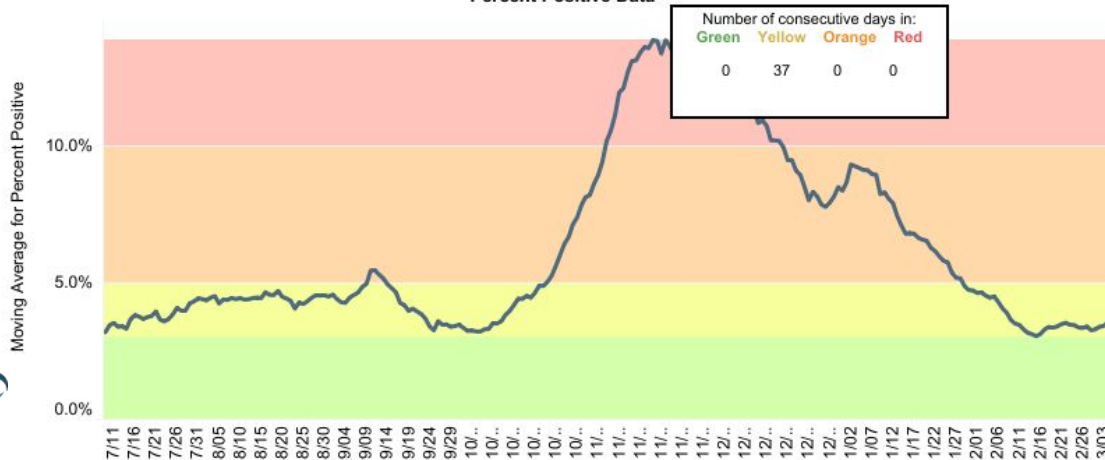
**Red:** >25 cases/100K  
>10% positivity

**Orange:** 10-25 cases/100K  
5-10% positivity

**Yellow:** 1-10 cases/100K  
3-5% positivity

**Green:** <1 cases/100K  
<3% positivity

## Percent Positive Data



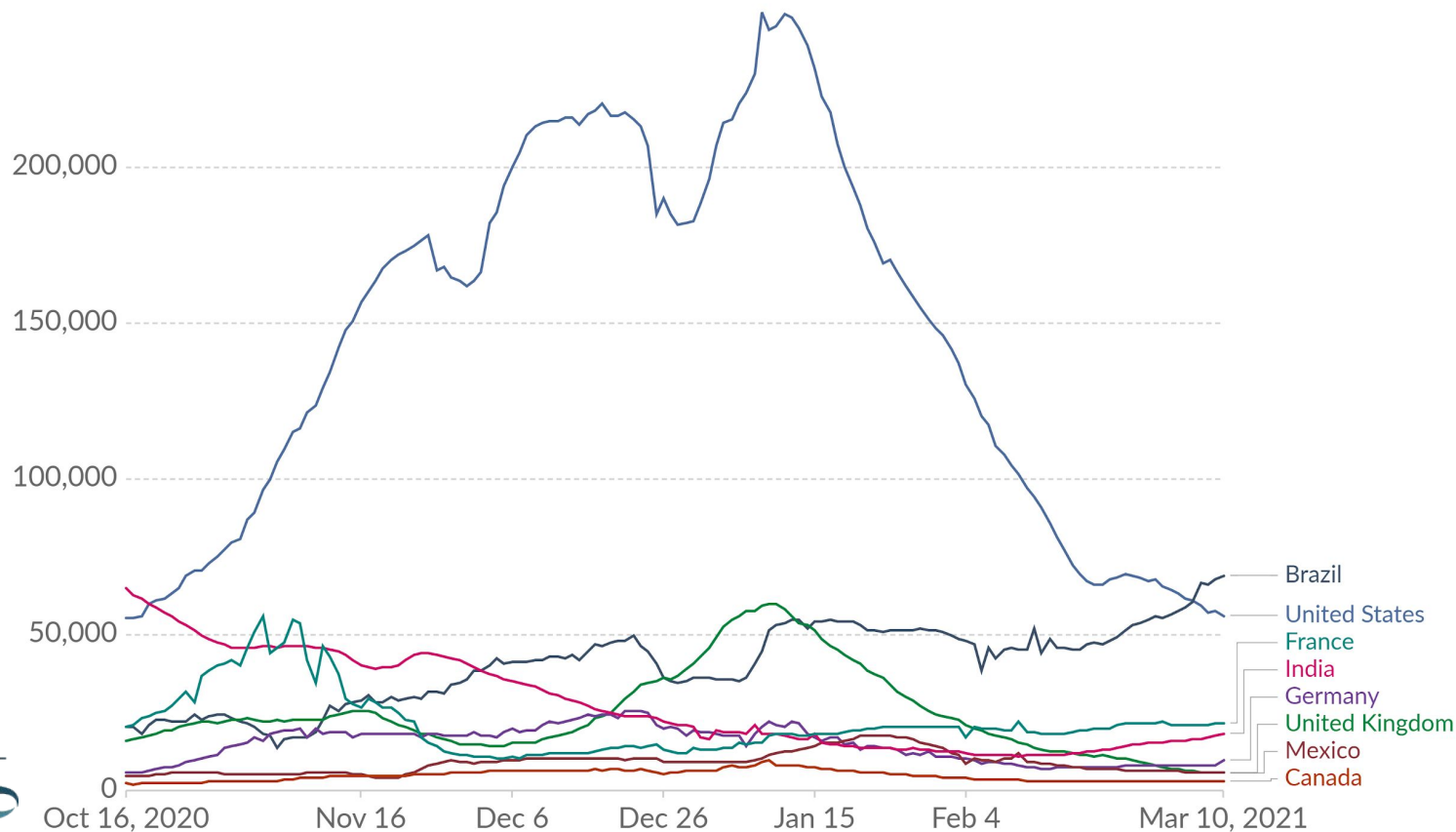
Developed in  
collaboration with  
Bloomfield Hills School  
District and Munetrix



# Daily new confirmed COVID-19 cases

Shown is the rolling 7-day average. The number of confirmed cases is lower than the number of actual cases; the main reason for that is limited testing.

Our World  
in Data



Source: Johns Hopkins University CSSE COVID-19 Data - Last updated 11 March, 11:03 (London time)

CC BY



END OF SECTION

# DISCUSSION