

Bloomfield's Blueprint

*Returning to teaching &
learning for the 2020-2021
school year*



March 25, 2021



Part One
COVID Update



COVID Vaccine Doses Administered by Person's Residence

Dashboard Updated: March 23, 2021. Doses administered are reported according to where the patient lives and the date they were vaccinated. Non-Michigan residents vaccinated in Michigan can be found by selecting "Non-Michigan Resident" in the County drop-down. Providers have 24 hours to report vaccinations to



Preparedness Region

All

Local Health Dept. Jurisdiction

All

County

Oakland

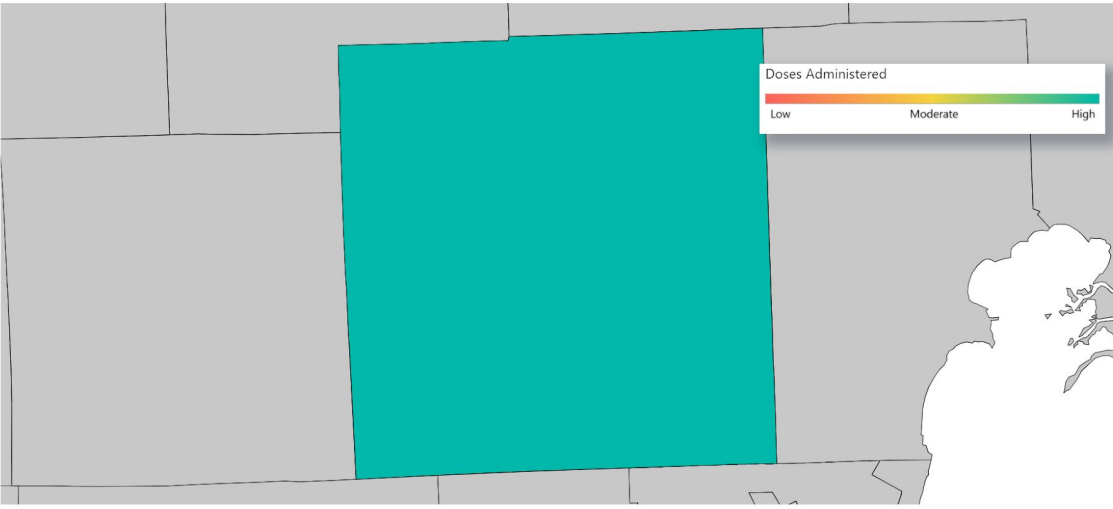
Provider Type

All

Dose Number

All

COVID Doses Administered by County



Region 2N

Data as of:
3/23/21

Week Ending Date
12/19/2020 3/27/2021

Sex
All

Age Group
All

Number of COVID Vaccine Doses Administered
497,568



Weekly COVID-19 Report



Oakland County Schools

Reporting period: March 10– March 23			
METRIC	RESULT	Trend	DEFINITION
Total “Confirmed and Probable” COVID-19 Cases Reported in Oakland County	5390	↑	“Confirmed”: laboratory-confirmed positive molecular viral test “Probable”: rapid-antigen positive viral test
Cases/Day per Million Population 7-Day Average 14-Day Average	372 320	↑	Average number of cases per day per million population over the given timeframe
14-Day Average Daily Case Counts	385	↑	The average number of cases per day reported over the last 14 days of the reporting period
14-Day Average Daily Death Counts	.36	↑	The average number of deaths per day reported over the last 14 days of the reporting period
14-Day Average Tests Per Day	3703	↑	The average number of diagnostic tests administered to Oakland residents over the last 14 days of the reporting period
Percentage of Cases Hospitalized in the Last 14 Days	.30%	↓	The percentage of cases (confirmed and probable) that reported being hospitalized over the last 14 days of the reporting period
Percent Positivity (7 days)	9.62%	↑	Percentage of reported positive tests over the last 7 days (March 16 – March 23)
Percent Positivity (28 days)	5.94%	↑	Percentage of reported positive tests over the last 28 days (February 24 – March 23)
Healthcare Capacity Strength	STABLE	→	Assessment of bed availability and hospital capacity
Testing, Tracing, Containment Infrastructure	STRONG	→	Assessment of testing availability and OCHD contact tracing capability

Reporting Period:
March 10 -
March 23

Total Oakland County Cases Reported by Age Group					
Age Group	Total Cases	Trend	Age Group	Total Cases	Trend
0-4	68	↑	50-59	856	↑
5-9	170	↑	60-69	417	↑
10-13	260	↑	70-79	131	↑
14-18	656	↑	80-89	54	↑
19-29	1086	↑	90+	9	↑
30-39	848	↑	Unknown	4	
40-49	831	↑			

The number of reported cases increased by about 2,105 cases. The average number of tests per day increased to 354 tests per day. Percent positivity increased about 1.63% over the last 28 days and about 3.54% over the last 7 days. The number of deaths reported during this has increased by .22%. The percentage of cases hospitalized has decreased by .28%. Healthcare capacity remained stable. Testing, tracing, containment and infrastructure remain strong.



69,509

Total Cases¹

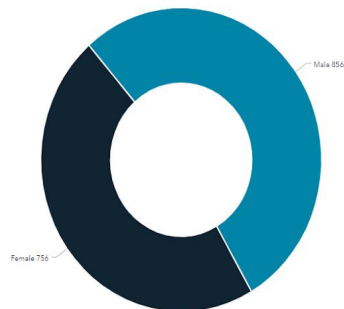
1,612

Total Deaths

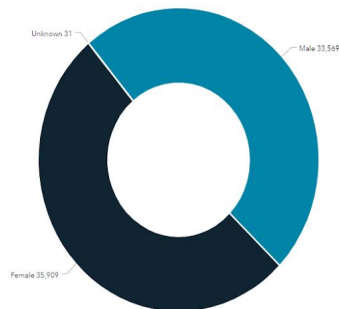
61,741

Total Recovered²

Deaths by Gender



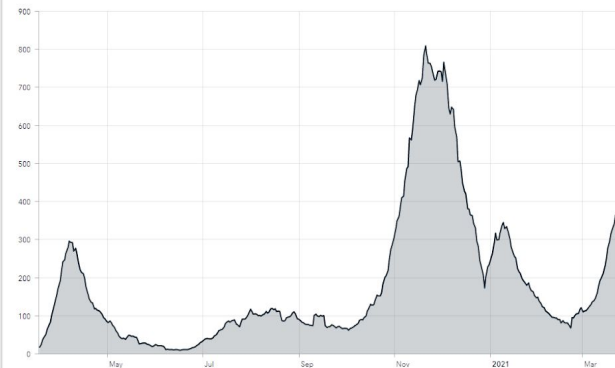
Cases by Gender



Counts by Day*

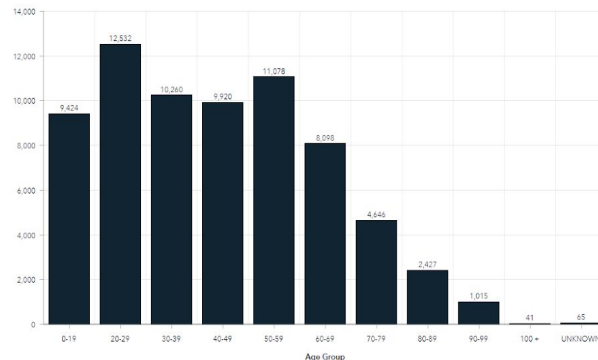
Date	Cases	Deaths
23-Mar	254	
22-Mar	487	
21-Mar	220	
20-Mar	306	
19-Mar	389	
18-Mar	403	
17-Mar	453	2
16-Mar	288	
15-Mar	327	
14-Mar	158	1
13-Mar	194	1
12-Mar	246	1
11-Mar	275	
10-Mar	261	
09-Mar	159	

7 Day Average of Daily Cases



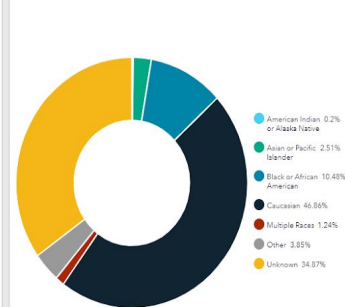
7 Day Case Average 7 Day Death Average Total Confirmed Cases

Cases by Age Group



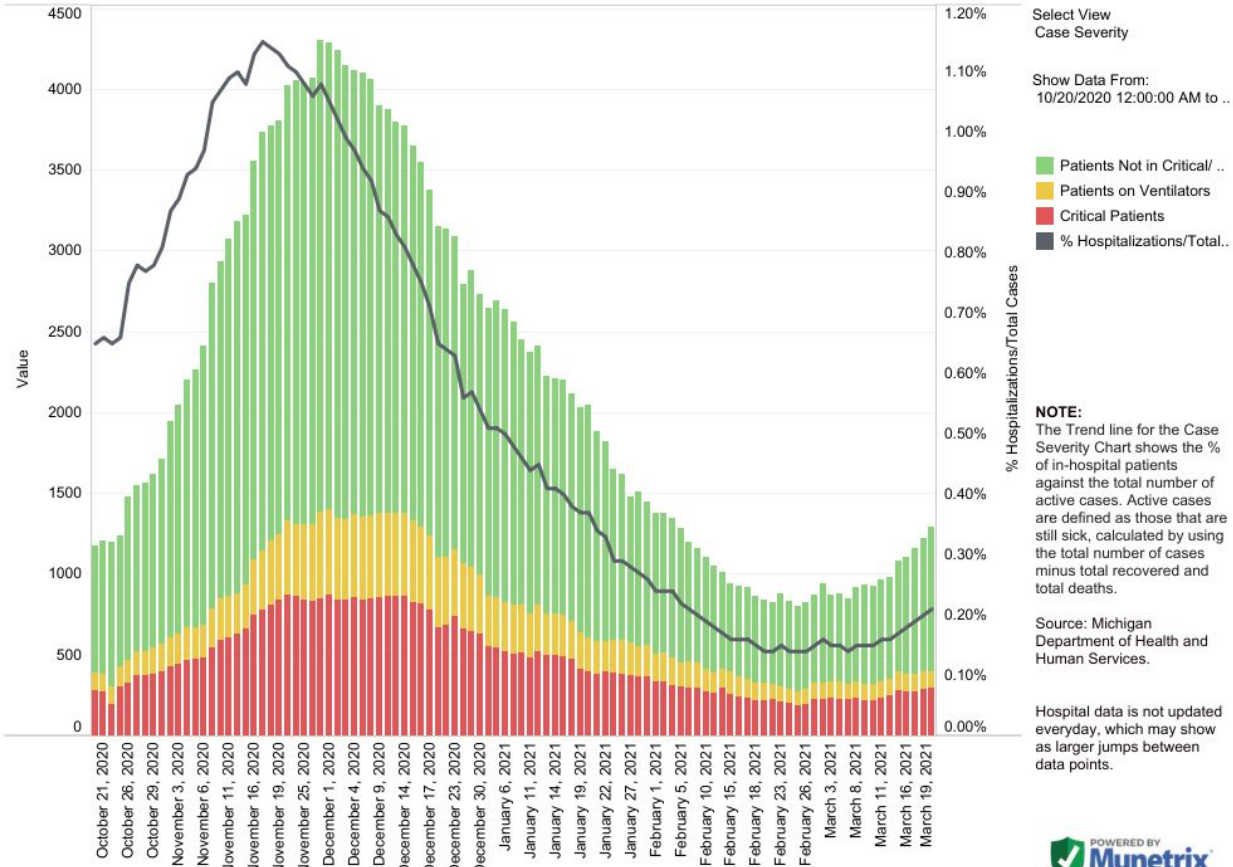
Cases by Age Group Cases by Age & Gender Deaths by Age Group Deaths by Age & Gender

Percentage of Cases by Race



Cases by Race Deaths by Race

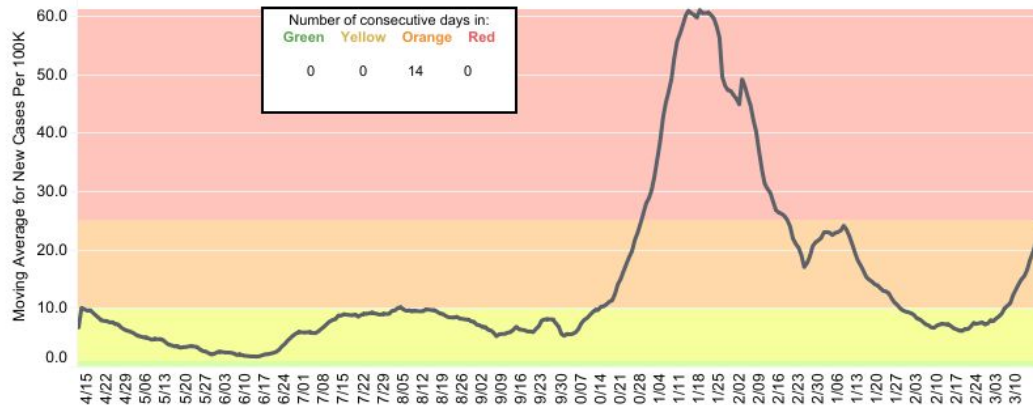
State Hospitalization Trends - Case Severity



County Dashboard: Oakland County

Notes

New Cases per 100K Data



Data for 3/19/2021:
New Cases per 100K: **25.54**
Percent Positive: **10.36%**

County
Oakland County

Show Data From:
4/12/2020 to 3/19/2021
and Null values

■ New Cases Moving Avera..
■ Percent Positive Moving A..

Data Source: <https://www.michigan.gov/coronavirus>
Moving average is based on previous 7 days, with a lag time of 3-days for data accuracy.

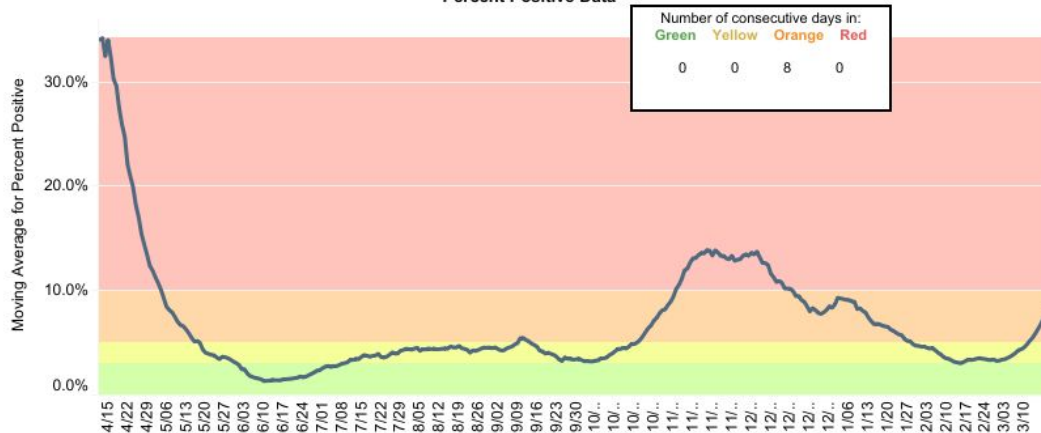
Reference lines are shown for risk of outbreak levels:

Red: >25 cases/100K
>10% positivity
Orange: 10-25 cases/100K
5-10% positivity
Yellow: 1-10 cases/100K
3-5% positivity
Green: <1 cases/100K
<3% positivity



Developed in collaboration with
Bloomfield Hills School District and Munetrix

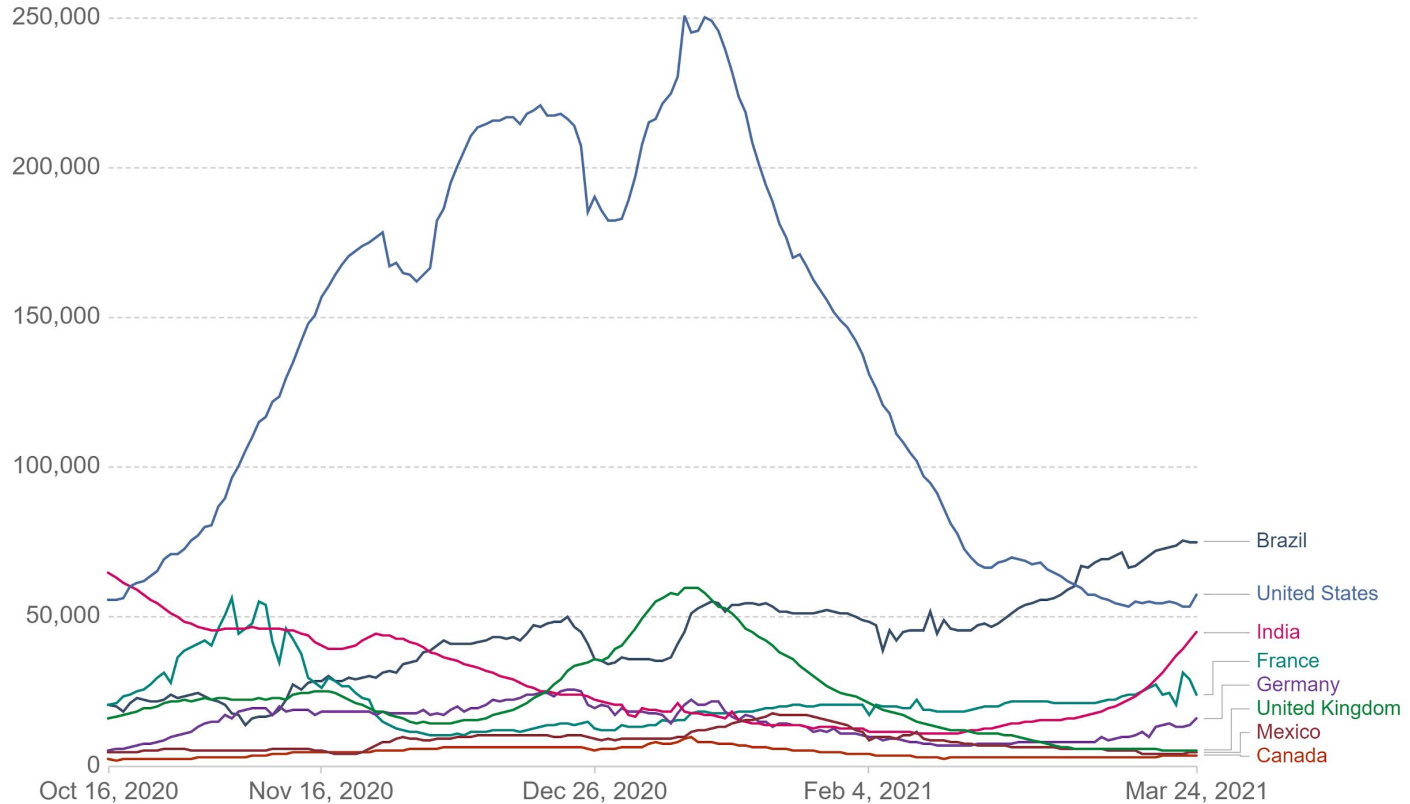
Percent Positive Data



Daily new confirmed COVID-19 cases

Shown is the rolling 7-day average. The number of confirmed cases is lower than the number of actual cases; the main reason for that is limited testing.

Our World
in Data



Source: Johns Hopkins University CSSE COVID-19 Data

CC BY



END OF SECTION

DISCUSSION

Part Two

Extended Continuity of Learning Plan



	School Start	School End
BHHS Black Hawk Hour at the beginning of the day from 7:30 to 9 a.m.	9:35	2:30
BHMS, EHMS, WHMS	8:15	3:05
Conant, Eastover, Lone Pine, Way	9:05	3:55
Wing Lake	8:45	2:35
International Academy	7:45	2:35
Bowers Academy	9:35	2:30

On March 16th, the BoE approved an in-person schedule change that increased the amount of time students are in-person. This schedule was implemented beginning March 22nd and the ECOL has been updated to reflect this adjustment.



Approval of the ECOL, will re-confirm this schedule will remain unchanged for the beginning of April.

	Monday	Tuesday	Wednesday	Thursday	Friday
MARCH	22 Half Day (Details on next slide)	23 Full Day	24 Full Day	25 Full Day	26 No School
	29 Spring Break	30 Spring Break	31 Spring Break	1 Spring Break	2 Spring Break
APRIL	5 Full Day	6	7	8	9



END OF SECTION

DISCUSSION

Part Three
Staffing Update



Staffing Update



Leave of Absence Provisions:

- 248 recovered / returned
- 0* staff on EPSLA
- 30 currently quarantined
- 23 active FMLA
- 2 Workers Comp Disability

**EPSLA sunset on 12/31/20. The district extended it to 1/29/21. So now any of those are absorbed in the regular FMLA numbers.*

Support Staff	Paras	Preschool/ Latch Key	Drivers
2019 Resignations	-12	-10	-13
2019 New Hires	+9	+9	+13
2020 Resignations	-18	-34	-13
2020 New Hires	+15	+4	+6
Cumulative Difference	-6	-31	-7

Staffing - Current Open Positions

3 Latchkey/Kidz Zone
teachers, 1 supervisor

10 paraeducators
district-wide

10 bus drivers

2 Instructional
Assistants at Wing
Lake

4 part time food service
positions





END OF SECTION

DISCUSSION

Part Four

Spring Testing
Requirements



BHHS *Spring* testing update

- MDE submitted a waiver on Feb. 12th, 2021, asking the US Department of Education to waive state assessments and the accountability for this year, knowing that many school districts have benchmark data on children. The US Department of Education has the right to approve the entire waiver or portions of the waiver.
- It can take 30-120 days for the US Department of Education to respond to MDE's waiver request.
- MDE said on March 15th that they will extend testing windows if the waiver is denied.
- MDE has not received a response as to whether or not that waiver will be approved. As such, BHS has moved forward with planning the M-Step, MI-ACCESS, and PSAT/SAT testing as required by law during the assigned testing windows. At this time it is not known what flexibility we will have.
- MDE will not allow for remote testing. We are encouraging all families to be present for testing.
- Communication went out March 24th at 5pm to all grades 3-8 families about spring testing.
- A second communication with a survey went out on March 25th at 10am to all virtual families grades 3-8. The survey will gather the information BHS needs to plan for in-person testing virtual students.
- Further logistics and details will be sent to families after the break.
- The high school and Wing Lake sent specific communication to families.





END OF SECTION

DISCUSSION



BHHS *Virtual* Learning Community

BHHS will be offering a pilot program of select BHHS classes in a virtual learning environment for the 2021-22 school year.

- Courses will be taught by BHHS teachers and incorporate dynamic virtual learning engagements
- Students may select BHHS Virtual Courses as a first or second hour course to create a late start to their day
- BHHS Virtual Courses offer more independent learning opportunities with minimal specific on-screen check-ins
- BHHS Virtual Courses can be a single block and up to 8 depending on the student course selection. BHHS Virtual options will be augmented by other virtual providers for a full schedule if required
- Not all courses will be available for BHHS Virtual nor will the concurrent model of virtual/in-person be offered. Classes will either be all in-person or all virtual.
- BHHS virtual classes will match the rigor of in-person BHHS courses and meet all graduation requirements
- Students are indicating their interest in a BHHS Virtual Course with the current course registration process.