



Board of Education Meeting



May 20, 2021

Study Session

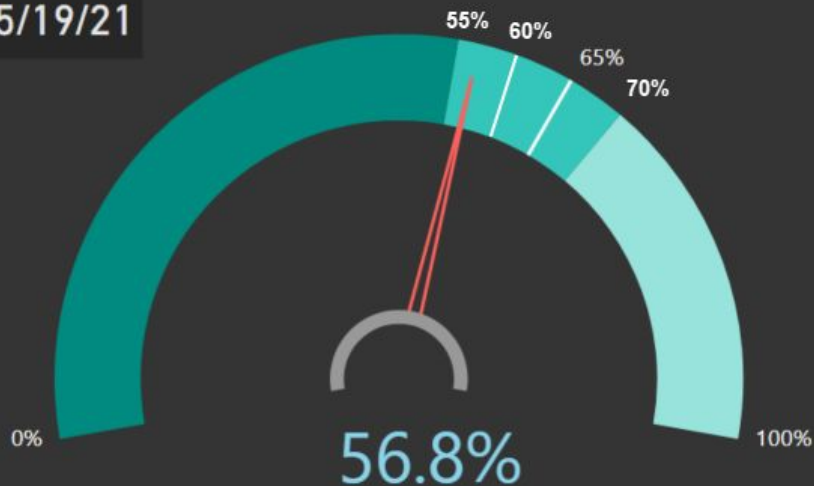


COVID-19 Update

Michigan Vacc to Normal Tracker

Data as of:

5/19/21



4,600,119 MI residents age 16+ with 1+ dose = 56.8%

Milestone achieved 5/10/2021

55% (4,453,304 residents age 16+), plus 2 weeks

STEP 1 start date: 5/24/2021

STEP 2: 60% (4,858,150 residents age 16+), plus 2 weeks

STEP 3: 65% (5,262,996 residents age 16+), plus 2 weeks

STEP 4: 70% (5,667,842 residents age 16+), plus 2 weeks

Weekly COVID-19 Report

Oakland County Schools



Reporting period: May 5–May 18			
METRIC	RESULT	Trend	DEFINITION
Total "Confirmed and Probable" COVID-19 Cases Reported in Oakland County	2581		"Confirmed": laboratory-confirmed positive molecular viral test "Probable": rapid-antigen positive viral test
Cases/Day per Million Population 7-Day Average 14-Day Average	104 153		Average number of cases per day per million population over the given timeframe
14-Day Average Daily Case Counts	184		The average number of cases per day reported over the last 14 days of the reporting period
14-Day Average Daily Death Counts	1		The average number of deaths per day reported over the last 14 days of the reporting period
14-Day Average Tests Per Day	3187		The average number of diagnostic tests administered to Oakland residents over the last 14 days of the reporting period
Percentage of Cases Hospitalized in the Last 14 Days	1.3%		The percentage of cases (confirmed and probable) that reported being hospitalized over the last 14 days of the reporting period
Percent Positivity (7 days)	5.94%		Percentage of reported positive tests over the last 7 days (April 28– May 4)
Percent Positivity (28 days)	8.90%		Percentage of reported positive tests over the last 28 days (April 7 – May 4)
Healthcare Capacity Strength	At or reaching capacity		Assessment of bed availability and hospital capacity
Testing, Tracing, Containment Infrastructure	STABLE		Assessment of testing availability and OCHD contact tracing capability

Total Oakland County Cases Reported by Age Group

Age Group	Total Cases	Trend	Age Group	Total Cases	Trend
0-4	74		50-59	325	
5-9	139		60-69	214	
10-13	190		70-79	112	
14-18	259		80-89	46	
19-29	448		90+	13	
30-39	389		Unknown	4	
40-49	368				

The number of reported cases decreased by 1,254 cases. The average number of tests per day decreased by 419 tests per day. Percent positivity decreased 1.93% over the last 28 days and decreased by 1.32% over the last 7 days. The number of deaths reported during this period has decreased by .5%. The percentage of cases hospitalized has increased by .9%. All age groups experienced decreases in case counts. Healthcare capacity in many places is still at or nearing capacity. Testing, tracing, containment and infrastructure remain stable.

COVID-19 Summary for Oakland County

100,452
Total Cases¹

2,115
Total Deaths

85,682
Total Recovered²

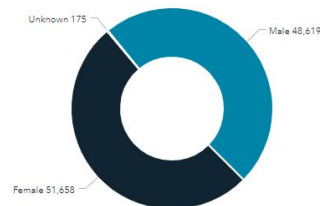
Counts

About

Deaths by Gender



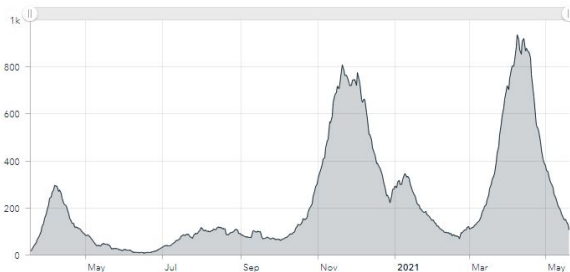
Cases by Gender



Counts by Day*

Date	Cases	Deaths
5/19/2021	65	
5/18/2021	89	
5/17/2021	124	
5/16/2021	68	
5/15/2021	92	1
5/14/2021	123	
5/13/2021	191	1
5/12/2021	210	1
5/11/2021	189	1
5/10/2021	184	1

7 Day Average of Daily Cases

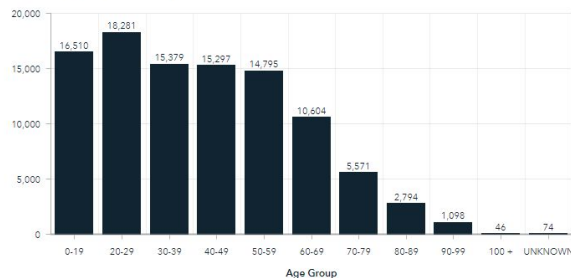


7 Day Case Average

7 Day Death Average

Total Confirmed Cases

Cases by Age Group



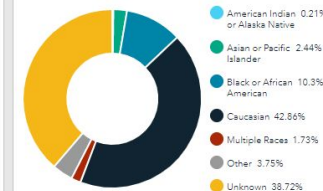
Cases by Age Group

Cases by Age & Gender

Deaths by Age Group

Deaths by Age & Gender

Percentage of Cases by Race



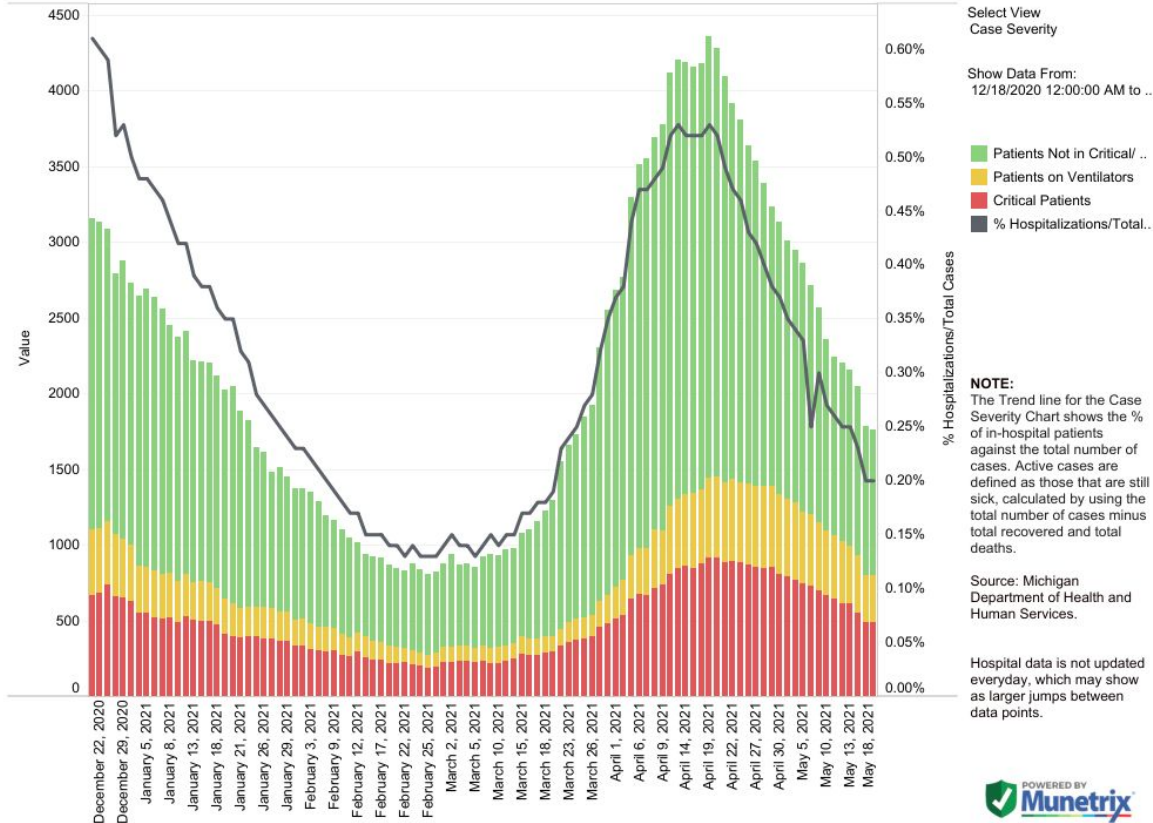
Cases by Race

Deaths by Race

Updated 5/19/21, 9:00 AM
No updates on Saturday or Sunday.



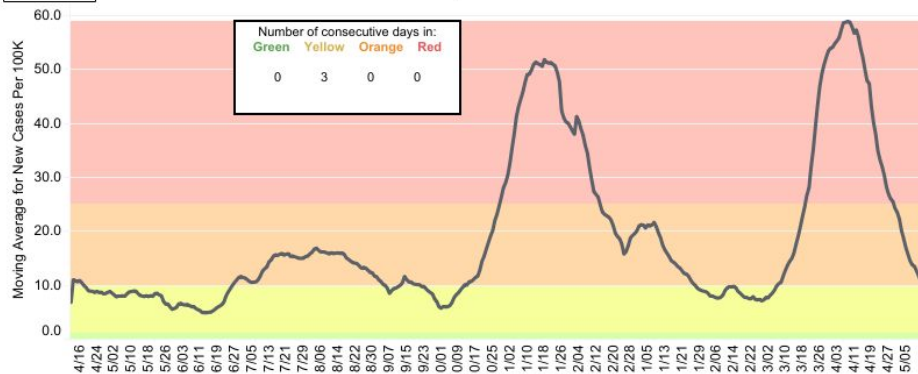
State Hospitalization Trends - Case Severity



County Dashboard: Oakland County

Notes

New Cases per 100K Data



Data for 5/15/2021:
New Cases per 100K: 5.00
Percent Positive: 5.92%

County
Oakland County

Show Data From:
4/12/2020 to 5/15/2021
and Null values

■ New Cases Moving Avera..

■ Percent Positive Moving A..

Data Source: <https://www.michigan.gov/coronavirus>

Moving average is based on previous 7 days, with a lag time of 3-days for data accuracy.

Reference lines are shown for risk of outbreak levels:

Red: >25 cases/100K
>10% positivity

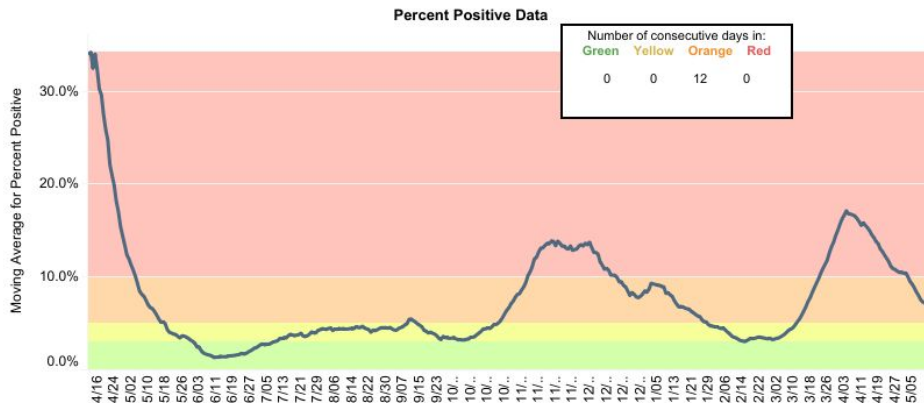
Orange: 10-25 cases/100K
5-10% positivity

Yellow: 1-10 cases/100K
3-5% positivity

Green: <1 cases/100K
<3% positivity



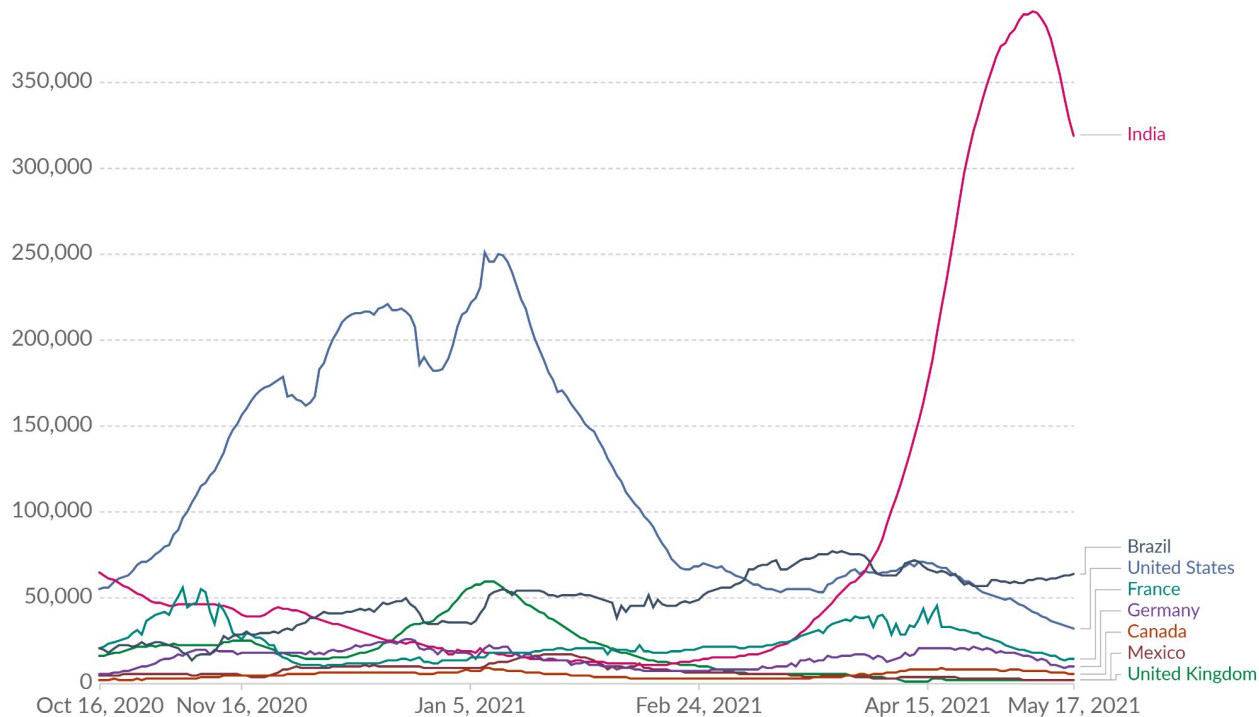
Developed in collaboration with
Bloomfield Hills School District and Munetrix



Daily new confirmed COVID-19 cases

Shown is the rolling 7-day average. The number of confirmed cases is lower than the number of actual cases; the main reason for that is limited testing.

Our World
in Data



Source: Johns Hopkins University CSSE COVID-19 Data

CC BY

End of Section **DISCUSSION**

