



# Board of Education Meeting



May 26, 2021

## Regular Meeting

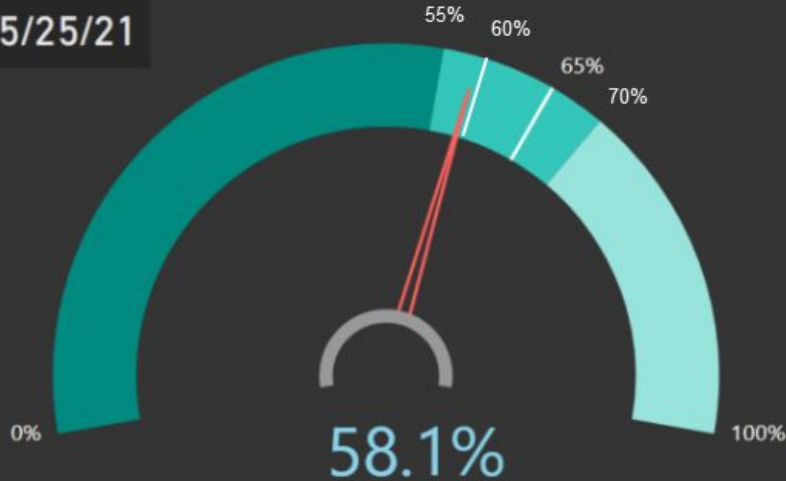


# COVID-19 Update

## Michigan First-Dose Tracker

Data as of:

5/25/21



4,701,343 MI residents age 16+ with 1+ dose



8,096,917 total MI population age 16+



58.1%

For reference, 70% MI residents age 16+ is equal to 5,667,842

# Weekly COVID-19 Report

## Oakland County Schools



Reporting period: May 12– May 25			
METRIC	RESULT	Trend	DEFINITION
Total "Confirmed and Probable" COVID-19 Cases Reported in Oakland County	1542	↓	"Confirmed": laboratory-confirmed positive molecular viral test "Probable": rapid-antigen positive viral test
Cases/Day per Million Population	61	↓	Average number of cases per day per million population over the given timeframe
7-Day Average	92	↓	
14-Day Average Daily Case Counts	110	↓	The average number of cases per day reported over the last 14 days of the reporting period
14-Day Average Daily Death Counts	.3	↓	The average number of deaths per day reported over the last 14 days of the reporting period
14-Day Average Tests Per Day	2834	↓	The average number of diagnostic tests administered to Oakland residents over the last 14 days of the reporting period
Percentage of Cases Hospitalized in the Last 14 Days	2.1%	↑	The percentage of cases (confirmed and probable) that reported being hospitalized over the last 14 days of the reporting period
Percent Positivity (7 days)	4.05%	↓	Percentage of reported positive tests over the last 7 days (April 28– May 4)
Percent Positivity (28 days)	7.15%	↓	Percentage of reported positive tests over the last 28 days (April 7 – May 4)
Healthcare Capacity Strength	Range 40-90% capacity-low Covid #'s	→	Assessment of bed availability and hospital capacity
Testing, Tracing, Containment Infrastructure	STABLE	→	Assessment of testing availability and OCHD contact tracing capability

Total Oakland County Cases Reported by Age Group

Age Group	Total Cases	Trend	Age Group	Total Cases	Trend
0-4	49	↓	50-59	208	↓
5-9	85	↓	60-69	130	↓
10-13	124	↓	70-79	75	↓
14-18	152	↓	80-89	36	↓
19-29	276	↓	90+	6	↓
30-39	212	↓	Unknown	5	
40-49	184	↓			

The number of reported cases decreased by 1,309 cases. The average number of tests per day decreased by 353 tests per day. Percent positivity decreased 1.75% over the last 28 days and decreased by 1.89% over the last 7 days. The number of deaths reported during this period has decreased by .7%. The percentage of cases hospitalized has increased by .8%. All age groups experienced decreases in case counts. Healthcare capacity in many places is still at or nearing capacity. Testing, tracing, containment and infrastructure remain stable.

# COVID-19 Summary for Oakland County

**100,993**

Total Cases<sup>1</sup>

**2,117**

Total Deaths

**90,539**

Total Recovered<sup>2</sup>

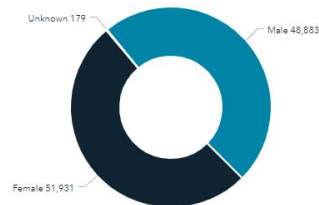
Counts

About

## Deaths by Gender



## Cases by Gender



## Counts by Day\*

Date	Cases	Deaths
5/25/2021	29	
5/24/2021	70	
5/23/2021	55	
5/22/2021	42	
5/21/2021	101	
5/20/2021	94	
5/19/2021	146	
5/18/2021	115	
5/17/2021	145	
5/16/2021	72	1

## 7 Day Average of Daily Cases

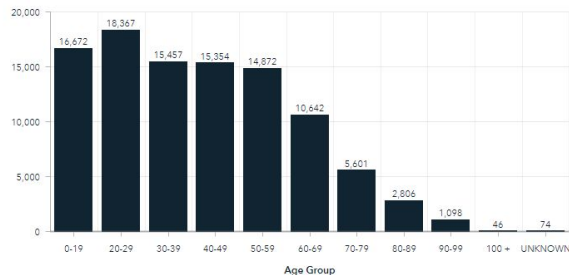


7 Day Case Average

7 Day Death Average

Total Confirmed Cases

## Cases by Age Group



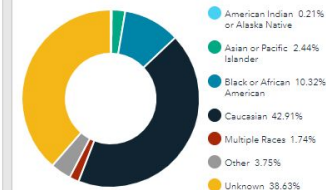
Cases by Age Group

Cases by Age & Gender

Deaths by Age Group

Deaths by Age & Gender

## Percentage of Cases by Race



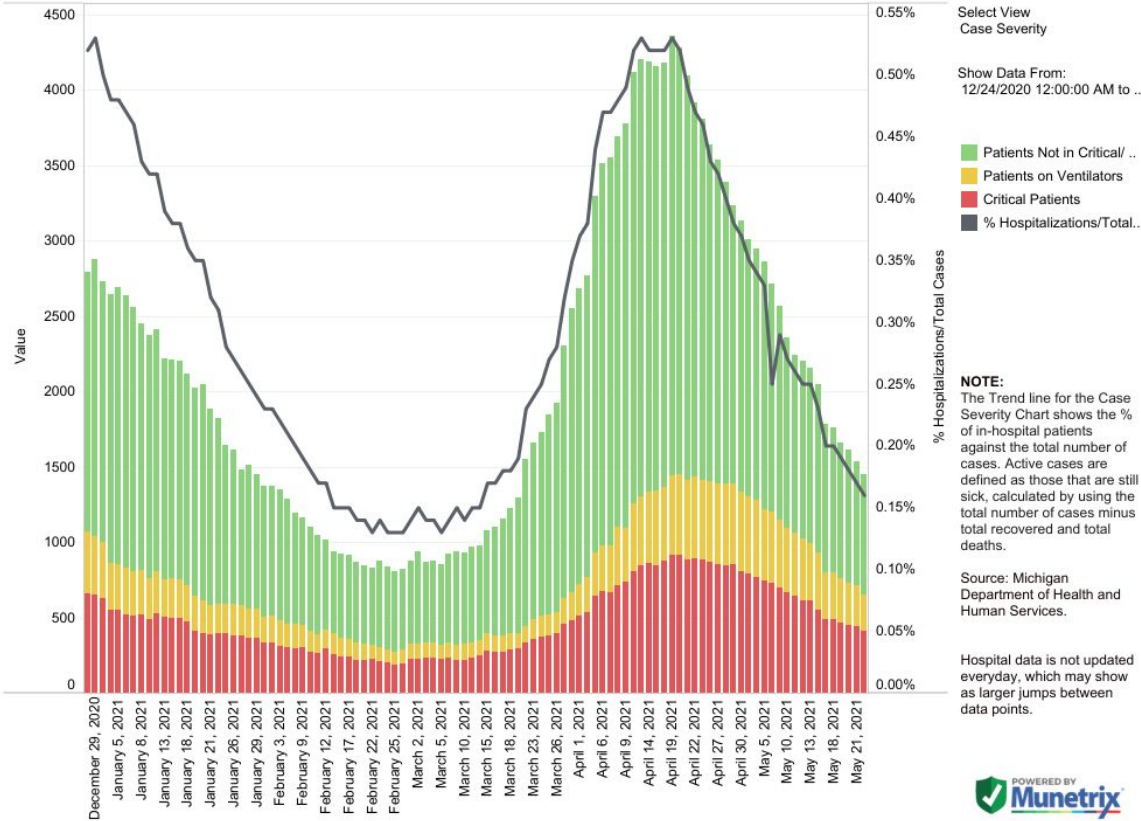
Cases by Race

Deaths by Race

Updated 5/25/21, 10:00 AM  
No updates on Saturday or Sunday.



## State Hospitalization Trends - Case Severity



## County Dashboard: Oakland County

Notes

New Cases per 100K Data

Data for 5/21/2021:  
New Cases per 100K: 3.81  
Percent Positive: 3.59%

County  
Oakland County

Show Data From:  
4/12/2020 to 5/21/2021  
and Null values

■ New Cases Moving Avera..

■ Percent Positive Moving A..

Data Source: <https://www.michigan.gov/coronavirus>

Moving average is based on previous 7 days, with a lag time of 3-days for data accuracy.

Reference lines are shown for risk of outbreak levels:

Red: >25 cases/100K  
>10% positivity

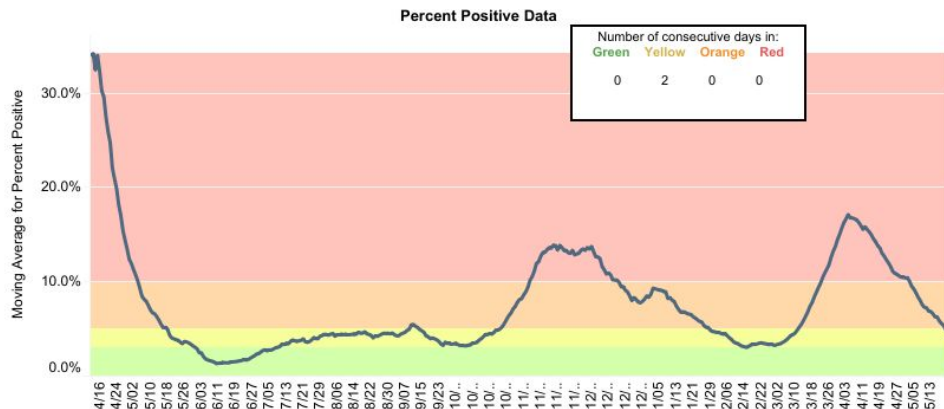
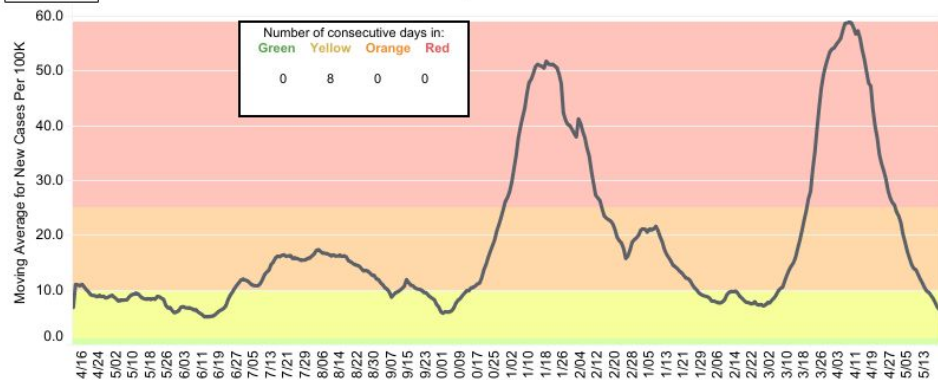
Orange: 10-25 cases/100K  
5-10% positivity

Yellow: 1-10 cases/100K  
3-5% positivity

Green: <1 cases/100K  
<3% positivity



Developed in collaboration with  
Bloomfield Hills School District and Munetrix

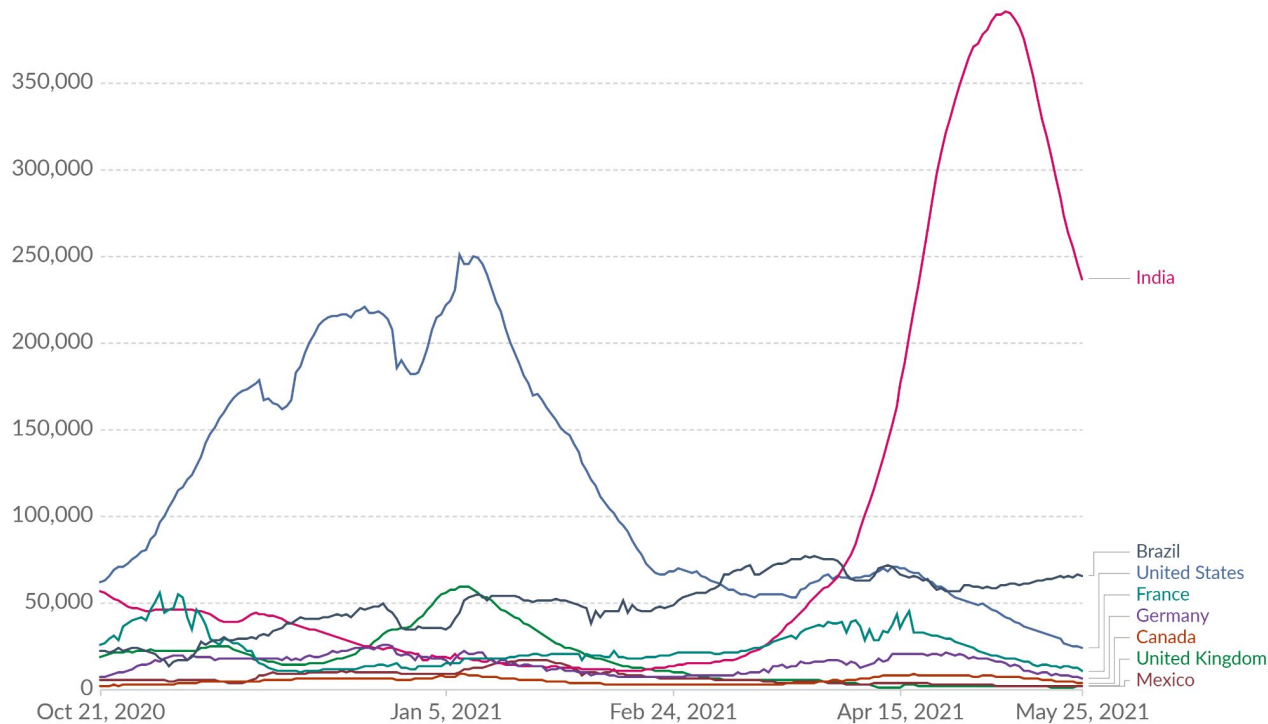




## Daily new confirmed COVID-19 cases

Shown is the rolling 7-day average. The number of confirmed cases is lower than the number of actual cases; the main reason for that is limited testing.

Our World  
in Data



Source: Johns Hopkins University CSSE COVID-19 Data

CC BY



End of Section

# DISCUSSION



Bloomfield Hills  
S c h o o l s

