

Bloomfield Hills Schools

2020 Bond Program Quarterly Update
July 28, 2025



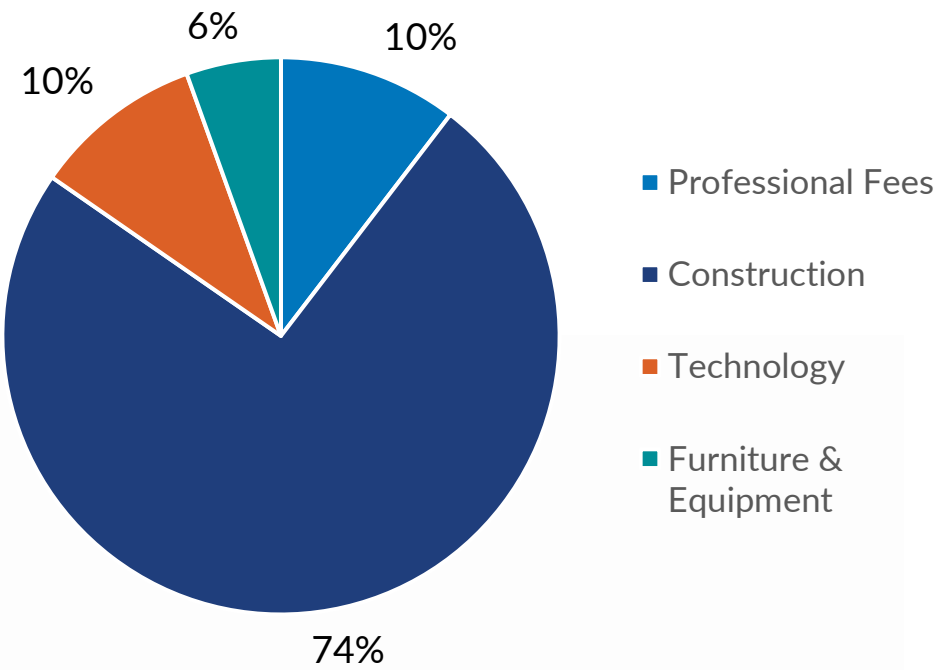
Bloomfield Hills Schools 2020 Bond Program | Quarter 2 Dashboard Report

BHS 2020 Bond Program Budget: \$207,955,000

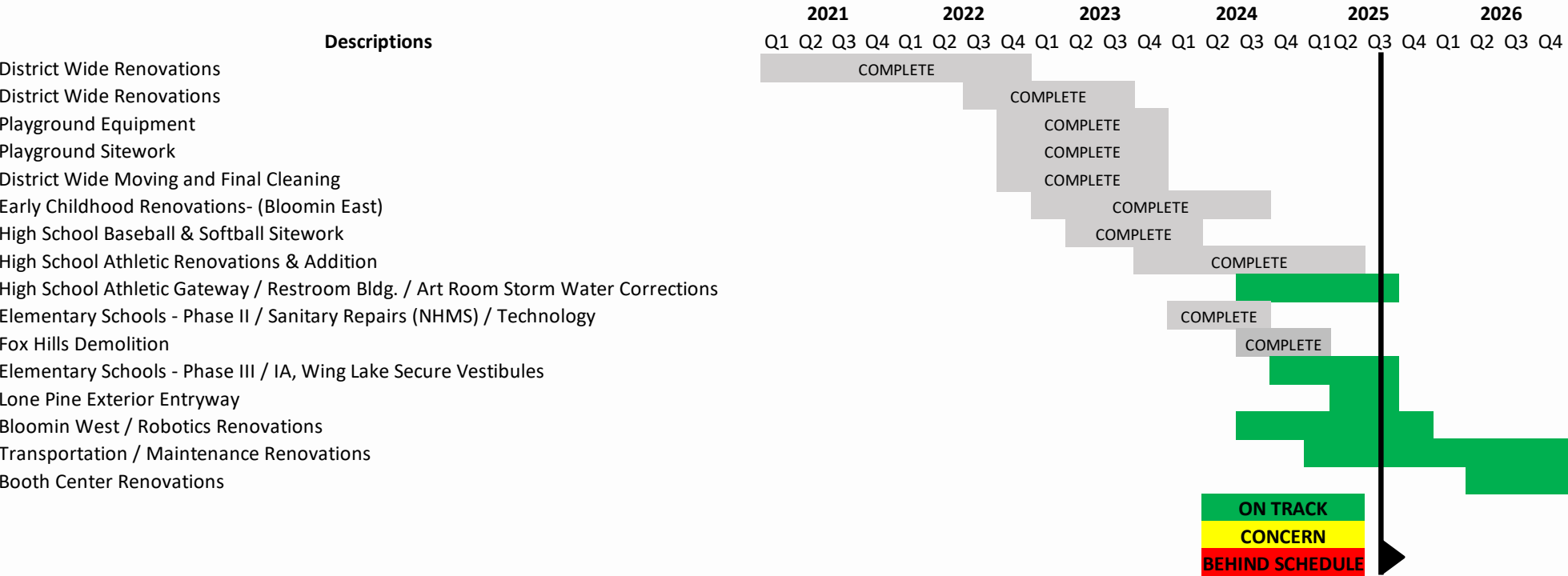
FUNDING ALLOCATION:	Projected Budget	Projected Commitments	Actuals Approved	Actual Cost To Complete	Forecasted Commitments	Unallocated Reserve	Estimate At Completion	Forecasted Over/(Under)
Professional Fees	\$17,004,766	\$16,036,067	\$13,385,473	\$2,650,594	(\$1,658,454)	\$0	\$14,377,613	(\$2,627,153)
Construction	\$160,303,693	\$151,064,122	\$136,466,461	\$14,597,661	\$11,592,803	\$0	\$162,656,925	\$2,353,232
Technology	\$19,743,172	\$16,656,275	\$13,999,387	\$2,656,888	\$3,086,897	\$0	\$19,743,172	\$0
Furniture & Equipment	\$10,903,369	\$9,123,075	\$8,792,193	\$330,882	\$1,780,293	\$0	\$10,903,369	\$0
OVERALL TOTALS:	\$207,955,000	\$192,879,540	\$172,643,515	\$20,236,025	\$14,801,539	\$0	\$207,681,079	(\$273,921)

Note: Misc Owner Cost through May 2025
Professional Fees Budget Includes Interest Earnings through July 2024

Budget Breakdown



Project Schedule



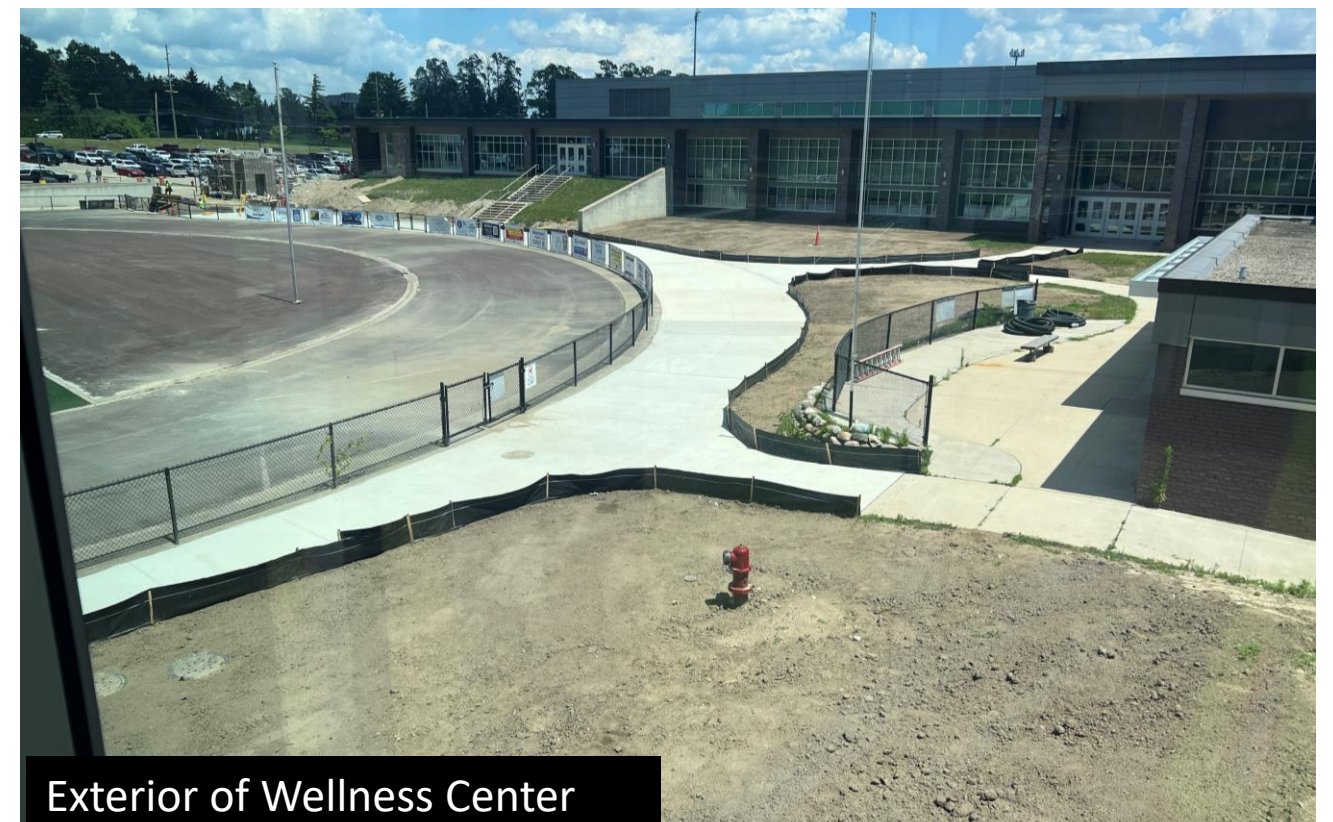
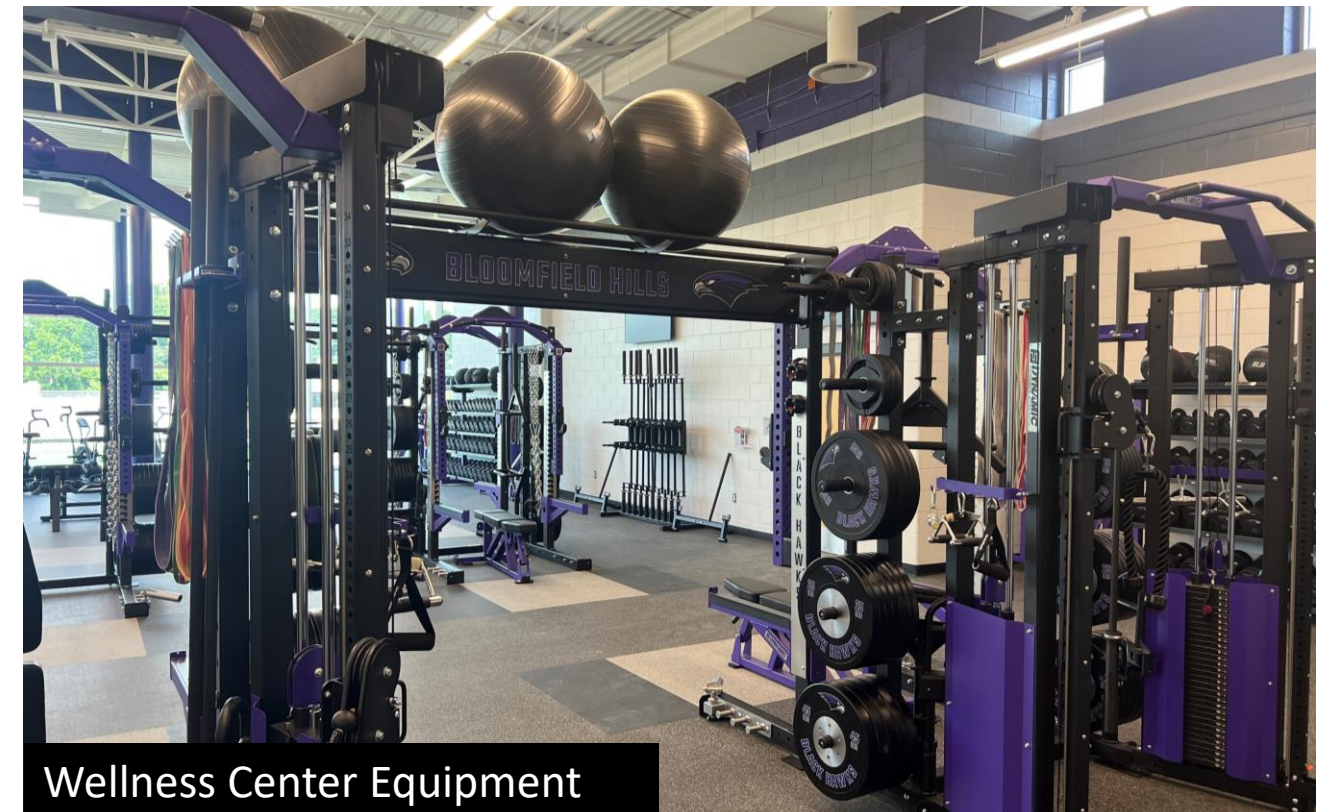
Under Construction / Upcoming Work – 2025 and Beyond

- ☐ High School Wellness Center and Concessions
- ☐ High School Gateway Entrance and Restroom Building
- ☐ Lone Pine Exterior Entryway
- ☐ International Academy Secure Vestibule
- ☐ Elementary School Phase III Renovations
- ☐ Bloomin West/ Robotics/ Maintenance Building Renovations
- ☐ Wing Lake Renovations
- ☐ Transportation Renovation and Expansion
- ☐ Booth and High School Renovations

Note - Numbers and dates on this report are subject to change



2025 District Projects- In Progress – High School Wellness Center



2025 District Projects- In Progress – High School Gateway / Restrooms



2025 District Projects- In Progress – Bloomin West / Robotics



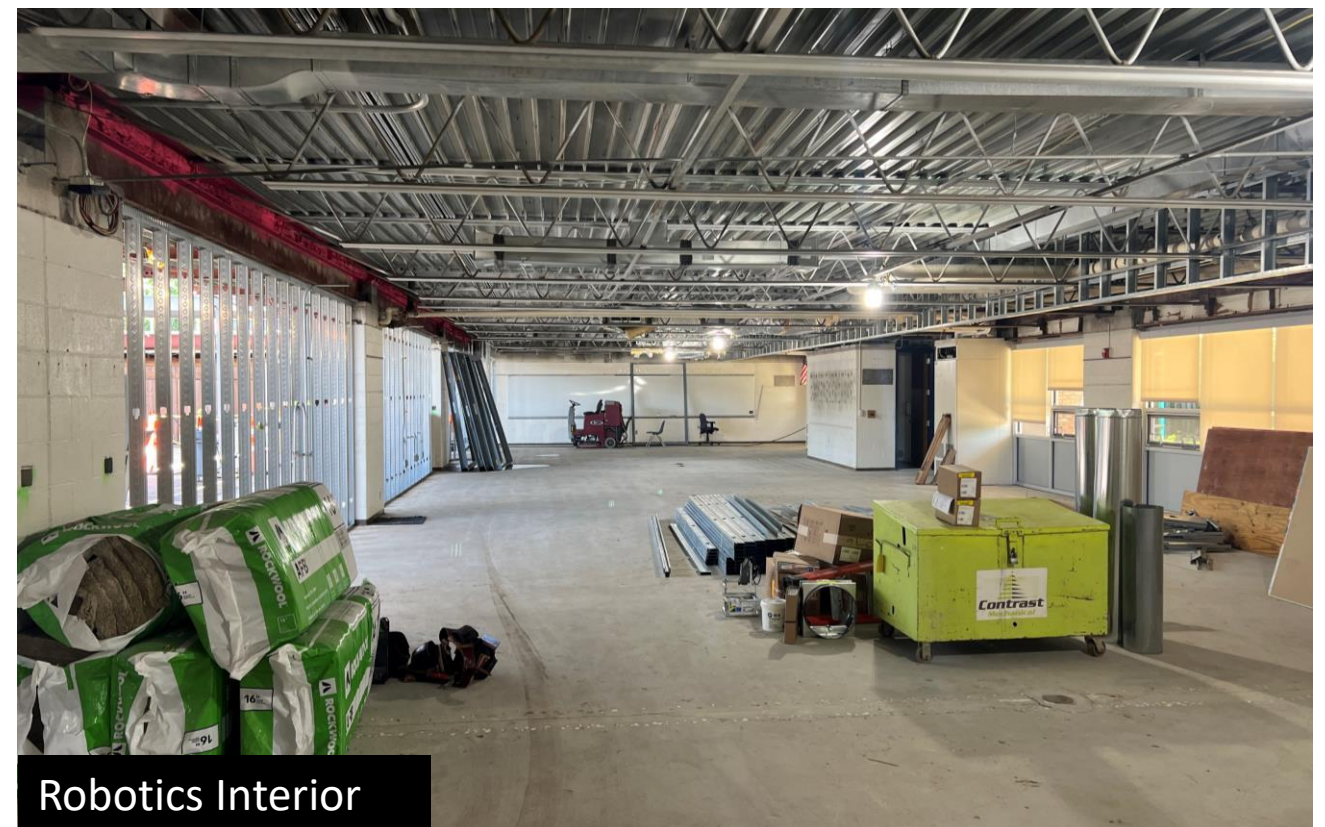
Raised Roof Section



Robotics Play Field



Robotics Play Field



Robotics Interior

2025 District Projects- In Progress – Elementary Schools



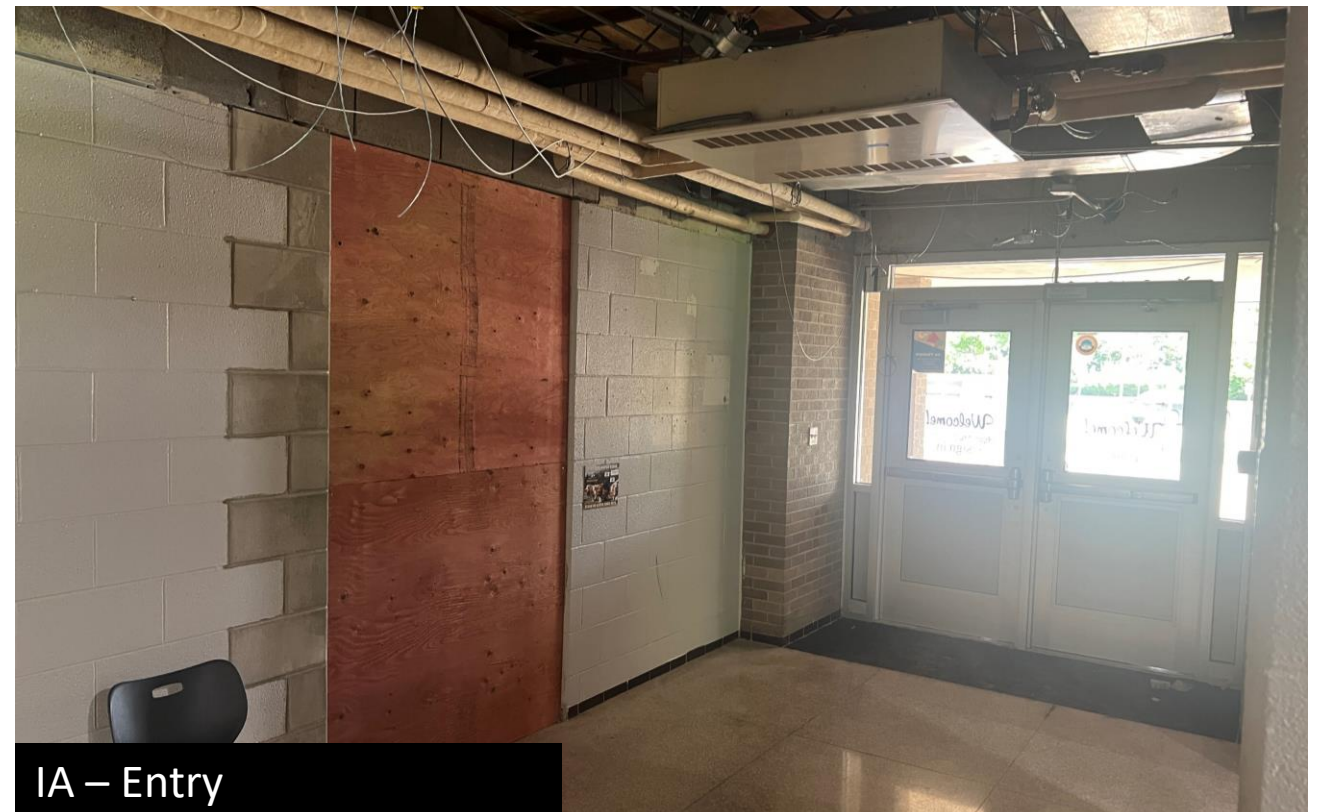
2025 District Projects- In Progress – Elementary Schools



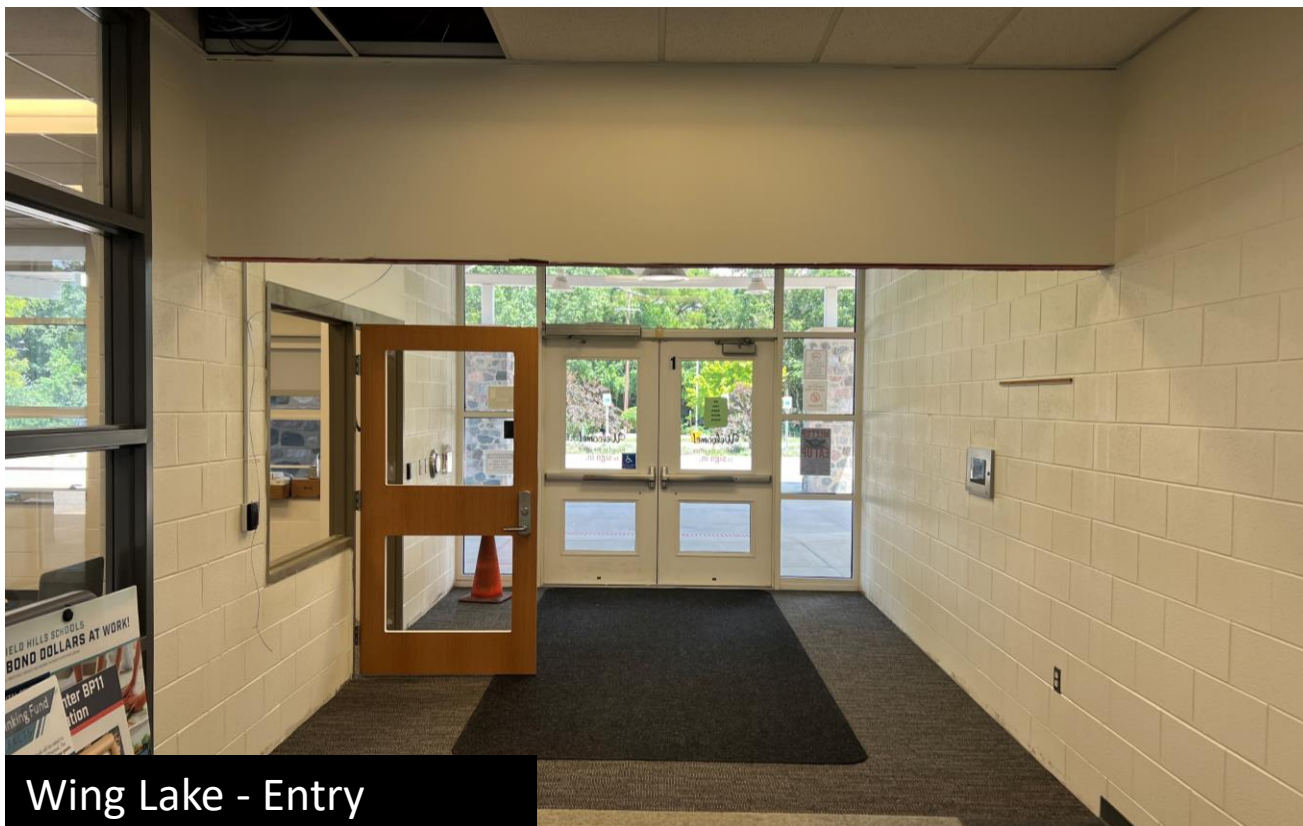
2025 District Projects- In Progress – International Center / Wing Lake



IA – Main Office



IA – Entry



Wing Lake - Entry



Wing Lake – FOC Displays